



Cromdale Walk, Great Ashby, Stevenage, SG1 6GA

EXCELLENTLY PRESENTED and SPACIOUS One Bedroom GROUND FLOOR Apartment Located in central Great Ashby with an allocated parking space. The accommodation includes FITTED KITCHEN, Lounge Area, Double Bedroom, FITTED BATHROOM, Close to The Neighbourhood Centre offering amenities, shops and Open Countryside.

Viewing Highly recommended.

£190,000

Cromdale Walk, Great Ashby, Stevenage, SG1 6GA



- Excellently Presented One Bedroom Apartment
- Allocated Parking Space
- Fitted Bathroom
- Ideal First Time Purchase
- Fitted Kitchen
- Double Bedroom
- Centrally Located in Great Ashby
- Lounge Area
- Viewing Strongly Suggested

Entrance Hallway

Double Panel Radiator, Hardwood Door to Front Aspect, 2 x Fitted Wardrobes, Doors to all rooms.

Bedroom

9'8" x 11'5" (2.953 x 3.493)

Double Panel Radiator, Double Glazed Window to Front Aspect, T.V Point, Carpeted.

Fitted Bathroom

6'6" x 6'7" (1.988 x 2.019)

Bath with Hot and Taps with Mains Shower over, Low Level W.C, Wash Basin with Mixer Tap with Tiled Splash Back, Double Panel Radiator, Extractor Fan.

Fitted Kitchen

11'6" x 6'3" (3.5164 x 1.908)

Roll Top Work Surfaces, Cupboards at Eye and Base Level, Wall Mounted Ideal Boiler, Stainless Steel Sink with Mixer Tap, Double Glazed Window to Side Aspect, Space for Electric Cooker, Washing Machine and Fridge/Freezer, Extractor Fan, Cupboards at Eye and Base Level,

Lounge Area

12'9" x 13'1" (3.911 x 4.013)

Double Panel Radiator, T.V Point, Double Glazed Window to Front Aspect and Side Aspect, Newly Carpeted, Opening to Kitchen Area.

Local and Lease Information and Current Tenants

Cromdale Walk is located in Great Ashby

with excellent access to the Neighbourhood Centre Shopping Complex and Open Countryside.

81 Years Remaining on the lease.

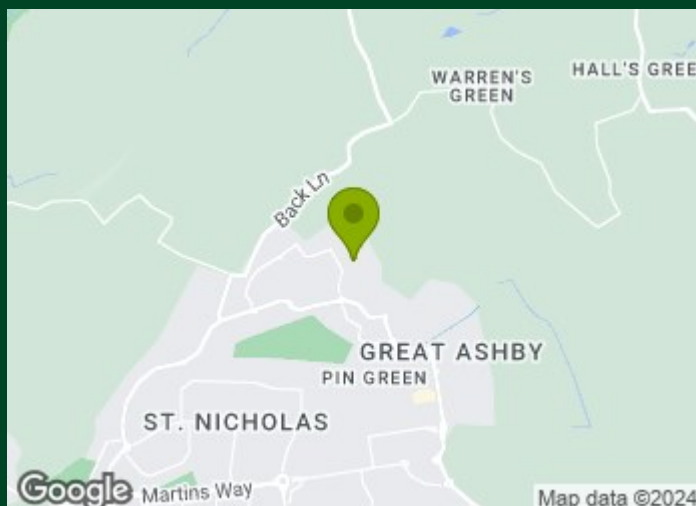
Service Charge £38.00 PCM

NO GROUND RENT

Current tenants are renting this property at £995.00 PCM and have been in situ for one year, they would like to remain in the property.

Allocated Parking

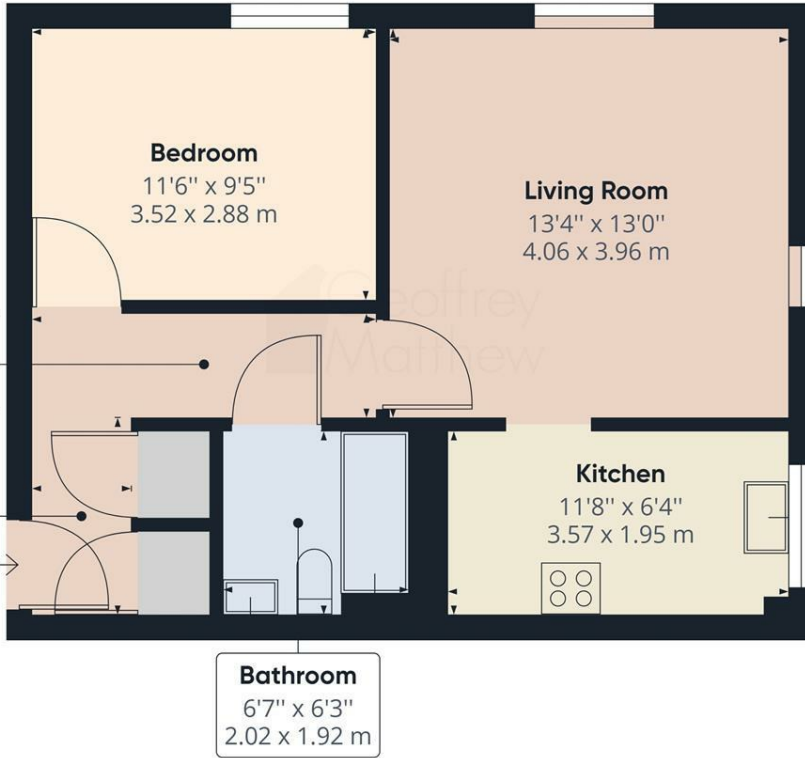
One Allocated Parking Space to the Front, there are also several visitors parking spaces available.



Directions



Floor Plan



Approximate total area⁽¹⁾
481.37 ft²
44.72 m²

(1) Excluding balconies and terraces

While every attempt has been made to ensure accuracy, all measurements are approximate, not to scale. This floor plan is for illustrative purposes only.

GIRAFFE360

Council Tax Details

North Herts DC Band A

These particulars, whilst believed to be accurate are set out as a general outline only for guidance and do not constitute any part of an offer or contract. Intending purchasers should not rely on them as statements of representation of fact, but must satisfy themselves by inspection or otherwise as to their accuracy. No person in this firm's employment has the authority to make or give any representation or warranty in respect of the property.

