



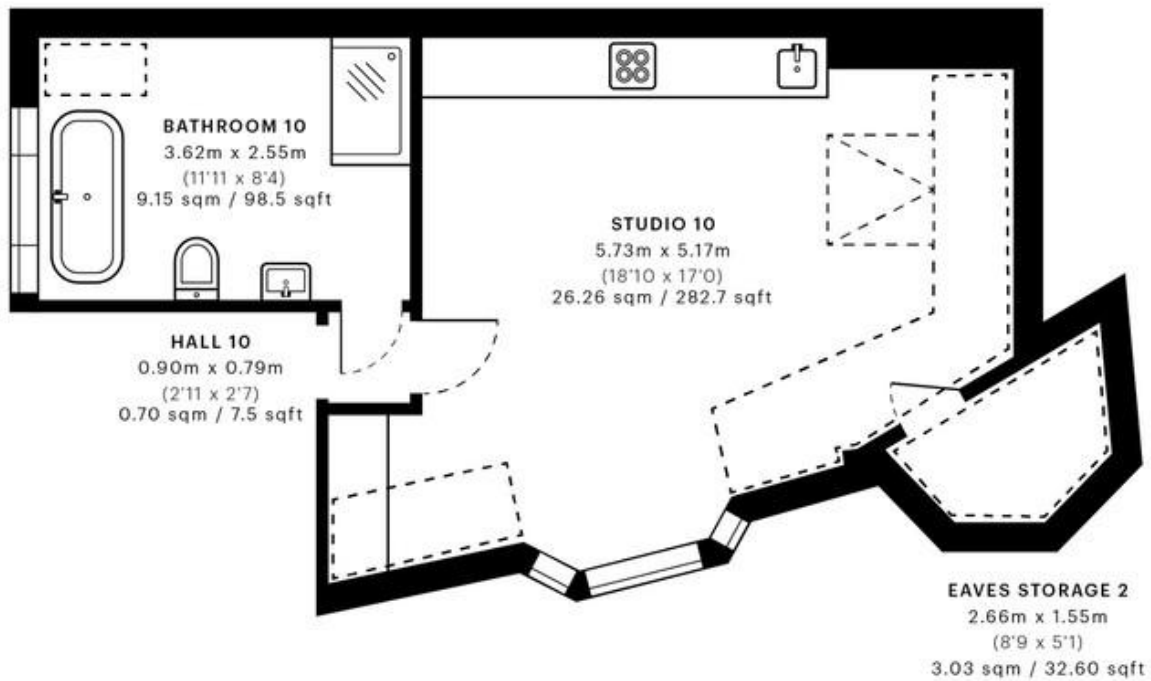
North End Road, London

£1,650 pcm %tenure%

Mile are pleased to offer this stunning studio to rent! The property consists of a large studio room with a Private fully fitted kitchen! Located in the HEART OF GOLDERS GREEN - right OPPOSITE THE TUBE STATION!!!. Finished to a high standard. Available 15th July 2025 MUST BE SEEN TO AVOID DISSAPPOINTMENT! EPC RATING D

ALL BILLS INCLUDED (INC COUNCIL TAX AND INTERNET)

- High specification
- Spacious
- ALL BILLS INCLUDED
- Fully fitted kitchen
- FURNISHED
- Stones Throw From Golders Green station
- Close to shops and amenities
- MUST BE SEEN TO AVOID DISSAPPOINTMENT!
- EPC Rating D
- AVAILABLE 15th July 2025



— Second Floor



GROSS INTERNAL AREA (GIA)
The footprint of the property
39.75 sqm / 427.87 sqft



NET INTERNAL AREA (NIA)
Excludes walls and external features
Includes washrooms, restricted head height
36.12 sqm / 388.79 sqft



EXTERNAL STRUCTURAL FEATURES
Balconies, terraces, verandas etc.
0.00 sqm / 0.00 sqft



RESTRICTED HEAD HEIGHT
Limited use area under 1.5 m
8.80 sqm / 94.72 sqft