



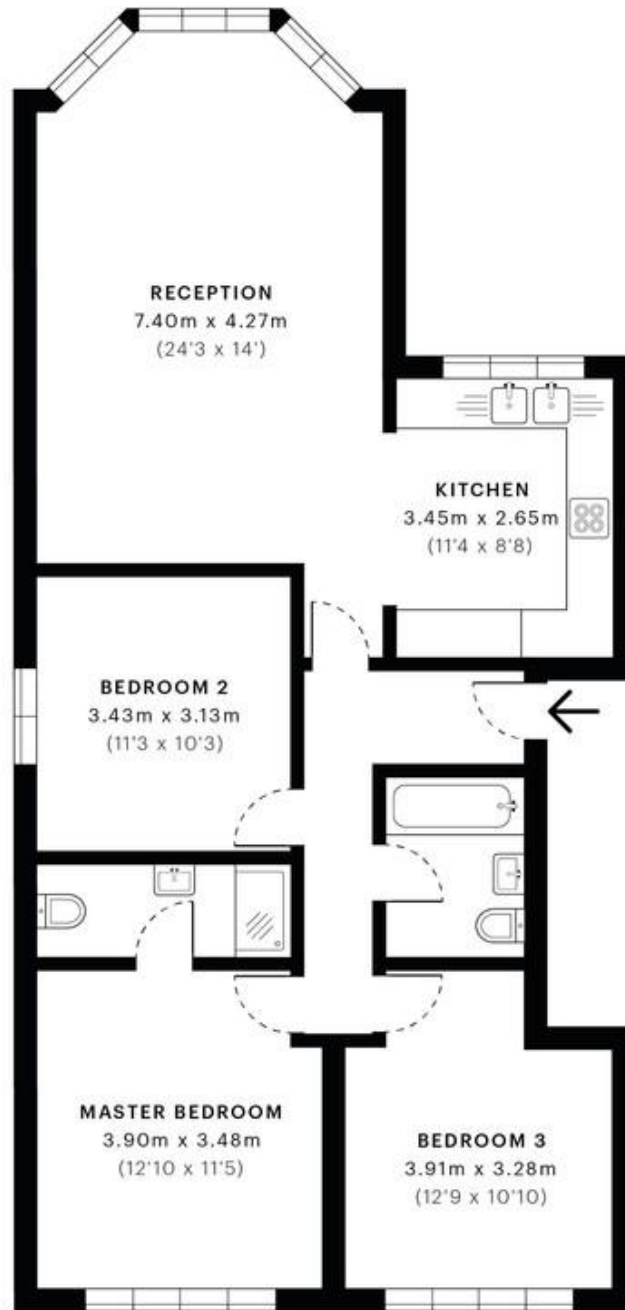
Beechcroft Avenue, London, NW11

£2,750 pcm %tenure%

*** SOLE AGENTS * ** HIGH SPECIFICATION****

Mile are pleased to offer this modern bedroom flat to rent! This incredible property consists of three double bedrooms and two bathrooms (one of which being En-suite), a family bathroom, a large reception room and fully fitted kitchen. This superb apartment also comes with an Air-conditioning unit in each room, two kitchen sinks (perfect for a kosher kitchen) and off street parking for one car. The property is located in a highly sought after location 5 min walk from Golders Green station and amenities. It is also a stones throw from local synagogues in the area! This flat is AVAILABLE 7th July 2025 AND MUST BE SEEN TO AVOID DISAPPOINTMENT!!! EPC Rating: B

- MODERN
- AIR CONDITIONED
- THREE DOUBLE BEDROOMS
- TWO BATHROOMS
- HIGH SPECIFICATION
- TWO KITCHEN SINKS
- HIGHLY SOUGHT AFTER LOCATION
- CLOSE TO STATION AND SHOPS
- Available 7th July 2025
- MUST BE SEEN!!!



— First Floor



GROSS INTERNAL AREA (GIA)
The footprint of the property.
90.3 Sqm / 972.4 Sqft



NET INTERNAL AREA (NIA)
Excludes walls and external features.
Includes washrooms, restricted head
85.4 Sqm / 919.6 Sqft



EXTERNAL STRUCTURAL FEATURES
Balconies, terraces, verandas etc.
0.0 Sqm / 0.0 Sqft



RESTRICTED HEAD HEIGHT
Limited use area under 1.5m
0.0 Sqm / 0.0 Sqft