



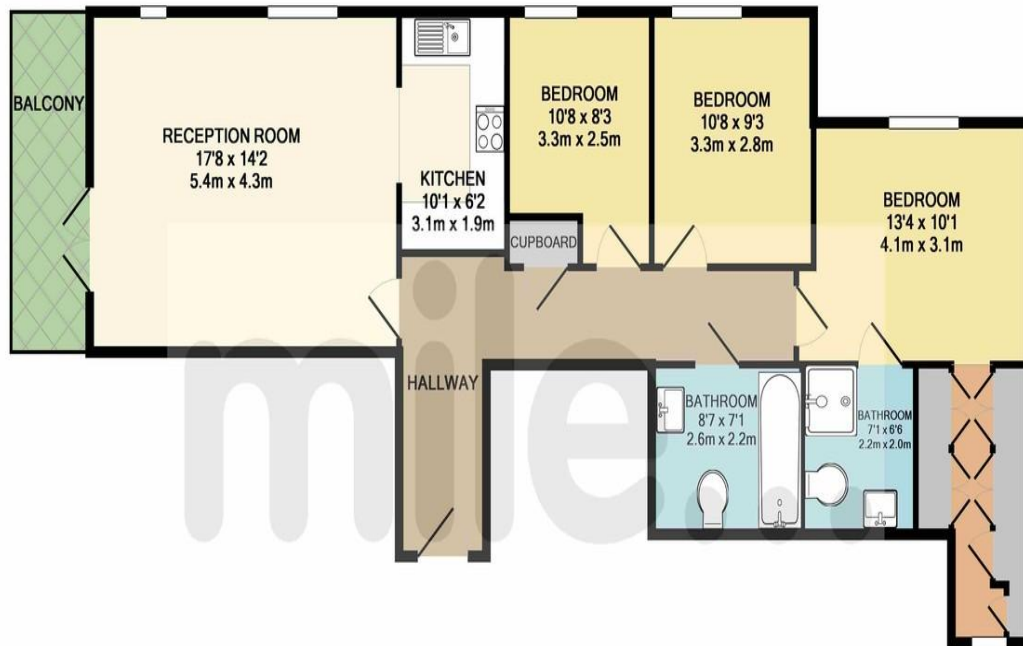
## The Pulse, Colindale, London NW9

£2,000 pcm

\*\*\* Sole Agents \*\*\*

mile... is delighted to bring to the market this FANTASTIC THREE BEDROOM PENTHOUSE apartment set in this recently built development in the HEART OF COLINDALE. The property comprises of THREE BEDROOMS, TWO BATHROOMS (ONE ENSUITE), LARGE 17ft RECEPTION room with DIRECT ACCESS TO A PRIVATE BALCONY, MODERN KITCHEN and PRIVATE PARKING. The Pulse is located within easy walking distance of COLINDALE (NORTHERN LINE) STATION, numerous BUSES, local shops and MORRISONS and ASDA supermarkets. AVAILABLE NOW!

- THREE BEDROOMS
- TWO BATHROOMS
- LARGE 17ft RECEPTION
- PENTHOUSE APARTMENT
- EXCELLENT CONDITION
- PARKING SPACE
- LIFT
- WALKING DISTANCE TO STATION
- FANTASTIC LOCATION
- HEART OF COLINDALE



TOTAL APPROX. FLOOR AREA 938 SQ.FT. (87.1 SQ.M.)

Whilst every attempt has been made to ensure the accuracy of the floor plan contained here, measurements of doors, windows, rooms and any other items are approximate and no responsibility is taken for any error, omission, or mis-statement. This plan is for illustrative purposes only and should be used as such by any prospective purchaser. The services, systems and appliances shown have not been tested and no guarantee as to their operability or efficiency can be given

Made with Metropix ©2017

**MONEY LAUNDERING REGULATIONS 2003:** Intending purchasers will be asked to produce identification documentation at a later stage and we would ask for your co-operation in order that there will be no delay in agreeing the sale.

**General:** While we endeavour to make our sales particulars fair, accurate and reliable, they are only a general guide to the property and, accordingly, if there is any point which is of particular importance to you, please contact the office and we will be pleased to check the position for you, especially if you are contemplating travelling some distance to view the property.

**Measurements:** These approximate room sizes are only intended as general guidance. You must verify the dimensions carefully before ordering carpets or any built-in furniture.

**Services:** Please note we have not tested the services or any of the equipment or appliances in this property, accordingly we strongly advise prospective buyers to commission their own survey or service reports before finalising their offer to purchase.