



Oriental Square, London

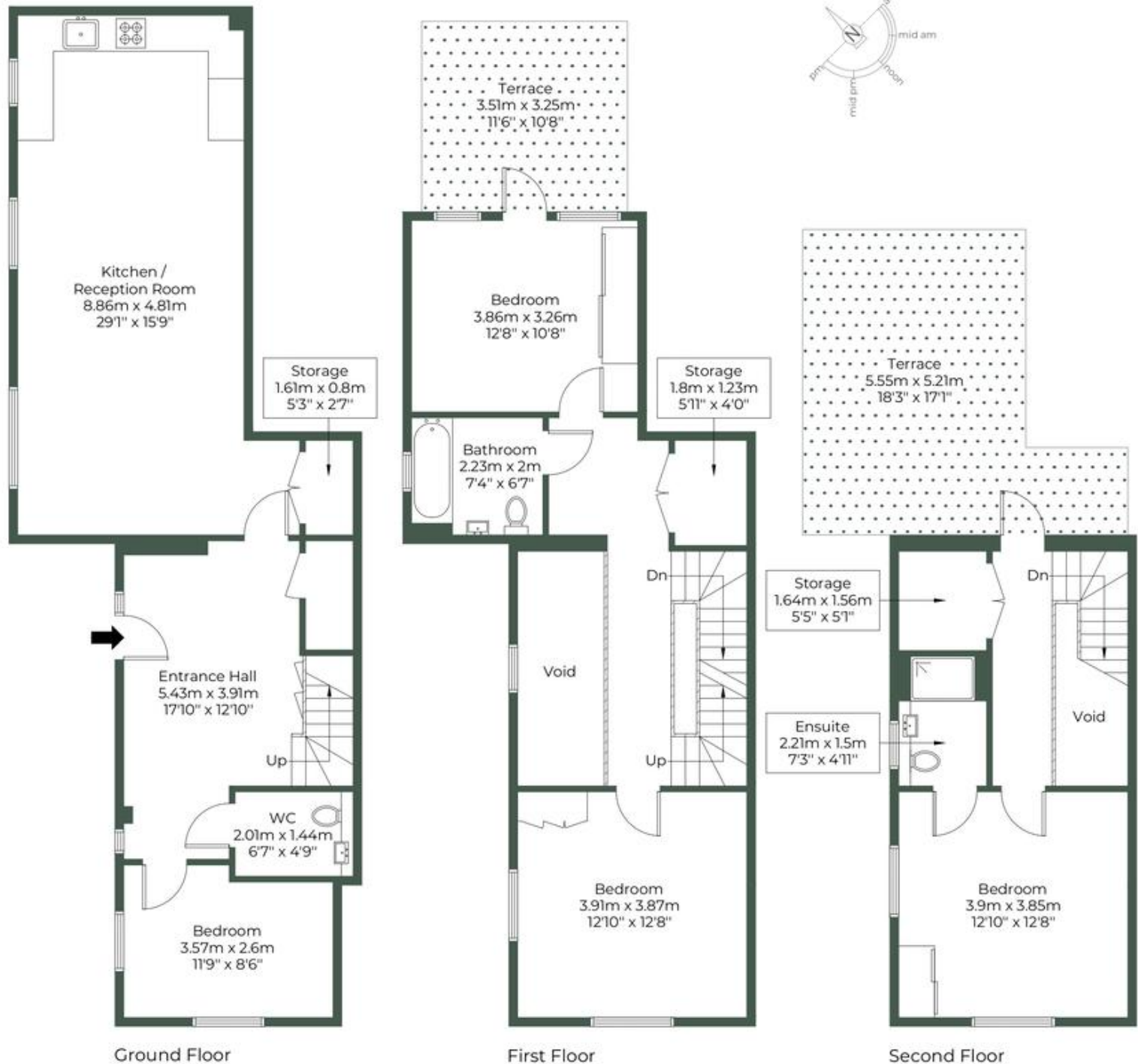
£925,000 Leasehold

Welcome to your dream home in the heart of Colindale! This stunning 4-bedroom townhouse, situated in the highly sought-after 399 development, offers an exceptional blend of modern elegance and comfort. Perfectly designed for family living, this property combines style, space, and convenience in one of London's most desirable locations. This exceptional 4-bedroom townhouse in the 399 development is more than just a home; it's a lifestyle. Don't miss the opportunity to make it yours! Contact us today to arrange a viewing and see for yourself the unparalleled quality and comfort this property has to offer. EPC RATING B

- Four Bedroom Town House
- Two Bathrooms (one en suite)
- Two Secure allocated parking spaces
- Air-Conditioning
- Highly sought after location
- Two Roof Terraces
- High Specification
- EPC RATING B

ORIENTAL SQUARE, NW9 OFR

Approximate Gross Internal Area = 148.9 sq.m / 1603 sq.ft



M MILE

MONEY LAUNDERING REGULATIONS 2003: Intending purchasers will be asked to produce identification documentation at a later stage and we would ask for your co-operation in order that there will be no delay in agreeing the sale.

General: While we endeavour to make our sales particulars fair, accurate and reliable, they are only a general guide to the property and, accordingly, if there is any point which is of particular importance to you, please contact the office and we will be pleased to check the position for you, especially if you are contemplating travelling some distance to view the property.

Measurements: These approximate room sizes are only intended as general guidance. You must verify the dimensions carefully before ordering carpets or any built-in furniture.

Services: Please note we have not tested the services or any of the equipment or appliances in this property, accordingly we strongly advise prospective buyers to commission their own survey or service reports before finalising their offer to purchase.