



73 Bow Common Lane, London, E3 4AU

City Realtor are proud to present to the market this fantastic 3 bed + large lounge situated a short walk to Mile End Station.

The property consists of 3 large bedrooms, 1 large garden, 1 full bathroom with a second toilet, a spacious garden and a fully fitted kitchen & dining.

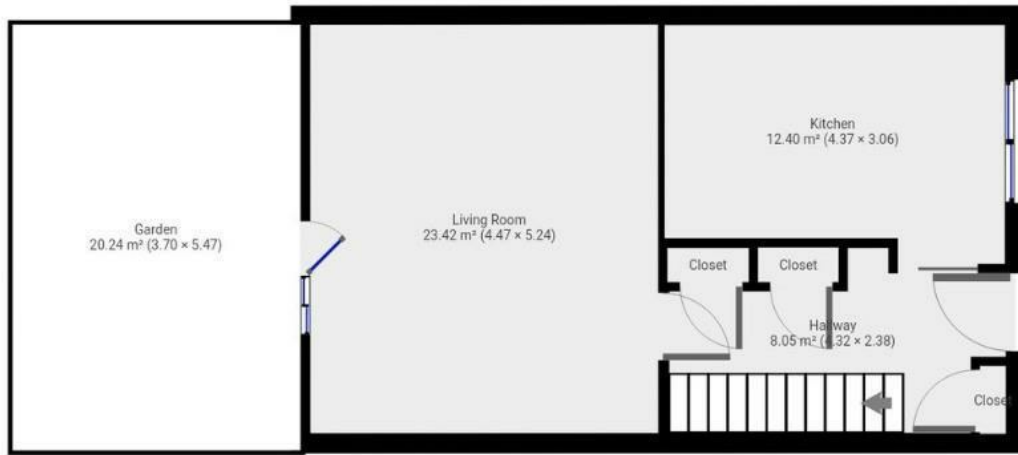
Location:
Mile End Station - 15 mins walk
Nisa Local - 1 min walk
Bartlett Park - 5 mins walk

- 3 BEDROOM + LOUNGE
- LARGE GARDEN
- 2 TOILETS
- FULLY FITTED KITCHEN & DINING
- WALKING DISTANCE TO MILE END STATION
- AVAILABLE 22ST SEPT

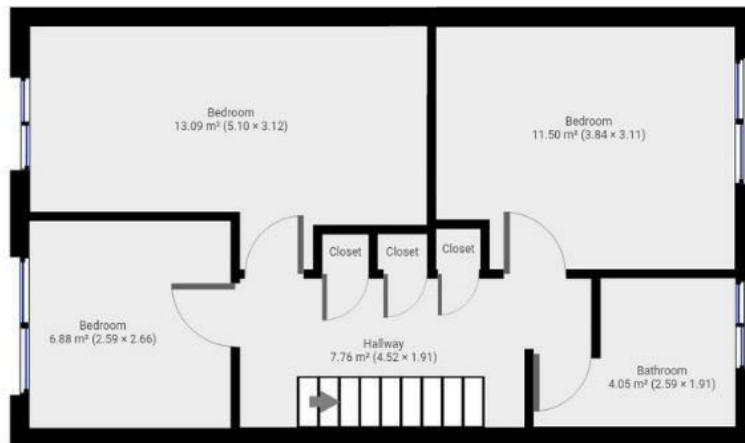
£3,000 Per month* Fees Apply

Bow Common Lane

Approximate Gross Internal Area
89.2m² - 960.1sqft

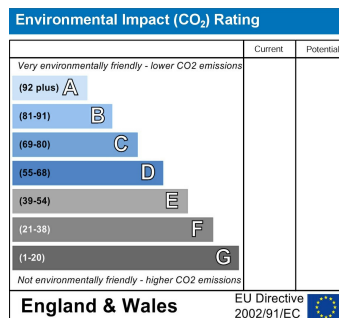
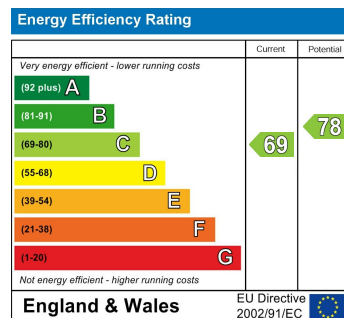


Ground Floor



First Floor

THIS FLOORPLAN IS PROVIDED WITHOUT WARRANTY OF ANY KIND. CITY REALTOR DISCLAIMS ANY WARRANTY INCLUDING, WITHOUT LIMITATION, SATISFACTORY QUALITY OR ACCURACY OF DIMENSIONS.



These particulars, whilst believed to be accurate are set out as a general outline only for guidance and do not constitute any part of an offer or contract. Intending purchasers should not rely on them as statements of representation of fact, but must satisfy themselves by inspection or otherwise as to their accuracy. No person in this firm's employment has the authority to make or give any representation or warranty in respect of the property.