



## Beaminster Court South Grove

, London, N15 5QH

Offers in excess of £285,000

### KEY FEATURES

- Private gated development
- Great transport links
- Off street private parking
- Excellent condition and ready to move in to
- South facing and lots of natural light
- Long lease
- Perfect first home or investment purchase

Stunning 1 bedroom flat in a private gated development with a private car park. This property offers a good sized bedroom and a generous amount of natural light. This flat is located within a private gated development and has quality fixtures and fittings and neutral decor. This property also benefits from lots of storage.

This property would make a perfect first home or investment purchase! Call now to arrange viewing.

### LOCATION

### Viewing

Please contact our Shadwell Office on 0207 790 7702 if you wish to arrange a viewing appointment for this property or require further information.

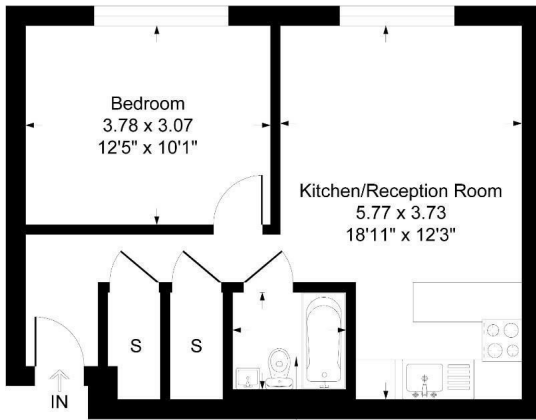
- Private gated development
- Long lease
- Private car park
- Excellent condition and ready to move into
- Perfect first home or investment purchase
- Great transport links
- Light and airy flat



## Floor Plan

### Beaminster Court, South Grove, LONDON, N15

Approximate Gross Internal Floor Area = 43.5 sq m / 469 sq ft



Ground Floor

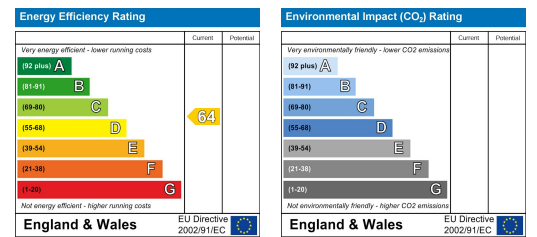
Bathroom  
1.91 x 1.65  
6'3" x 5'5"

Illustration for identification purposes only, measurements are approximate, not to scale.

## Area Map



## Energy Efficiency Graph



These particulars, whilst believed to be accurate are set out as a general outline only for guidance and do not constitute any part of an offer or contract. Intending purchasers should not rely on them as statements of representation of fact, but must satisfy themselves by inspection or otherwise as to their accuracy. No person in this firm's employment has the authority to make or give any representation or warranty in respect of the property.