



Arundel Road, Angmering, BN16 4LL

Freehold

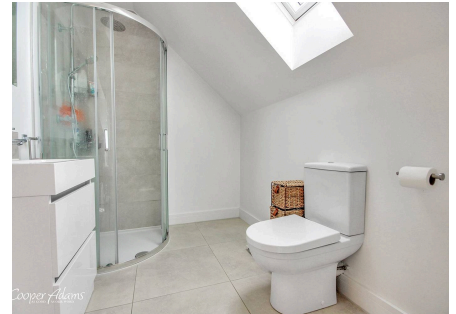
Superbly presented four bedroom semi-detached house • Stunning open plan kitchen/breakfast room • Sitting room • Master bedroom with en-suite • Family bathroom • Walking distance to shops and amenities • For full details, please visit Cooper Adams website

Cooper Adams

Superbly presented, this four bedroom semi-detached house offers a comfortable and stylish living environment. The property features a stunning open plan kitchen/breakfast room, ideal for modern living, sitting room, a master bedroom with en-suite, a family bathroom, and a convenient downstairs cloakroom. This home is conveniently located only 1.5 miles from Angmering mainline train station and within walking distance to local shops and amenities.

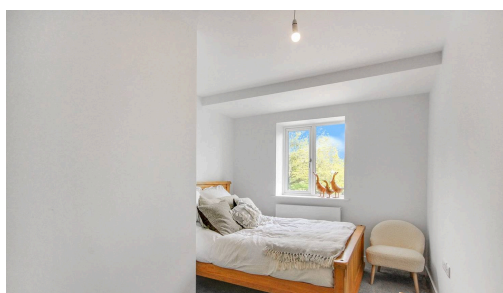
The garden to the rear of the house features a large patio area, ideal for enjoying sunny summer days, while the rest of the garden is laid to lawn. Approximately measuring 30ft x 55ft. At the front of the property, a driveway offers additional convenience. (The owner is creating two parking spaces, with construction starting beginning of April).

For full transparency, we want to let you know that a previous resident of this property has passed away.

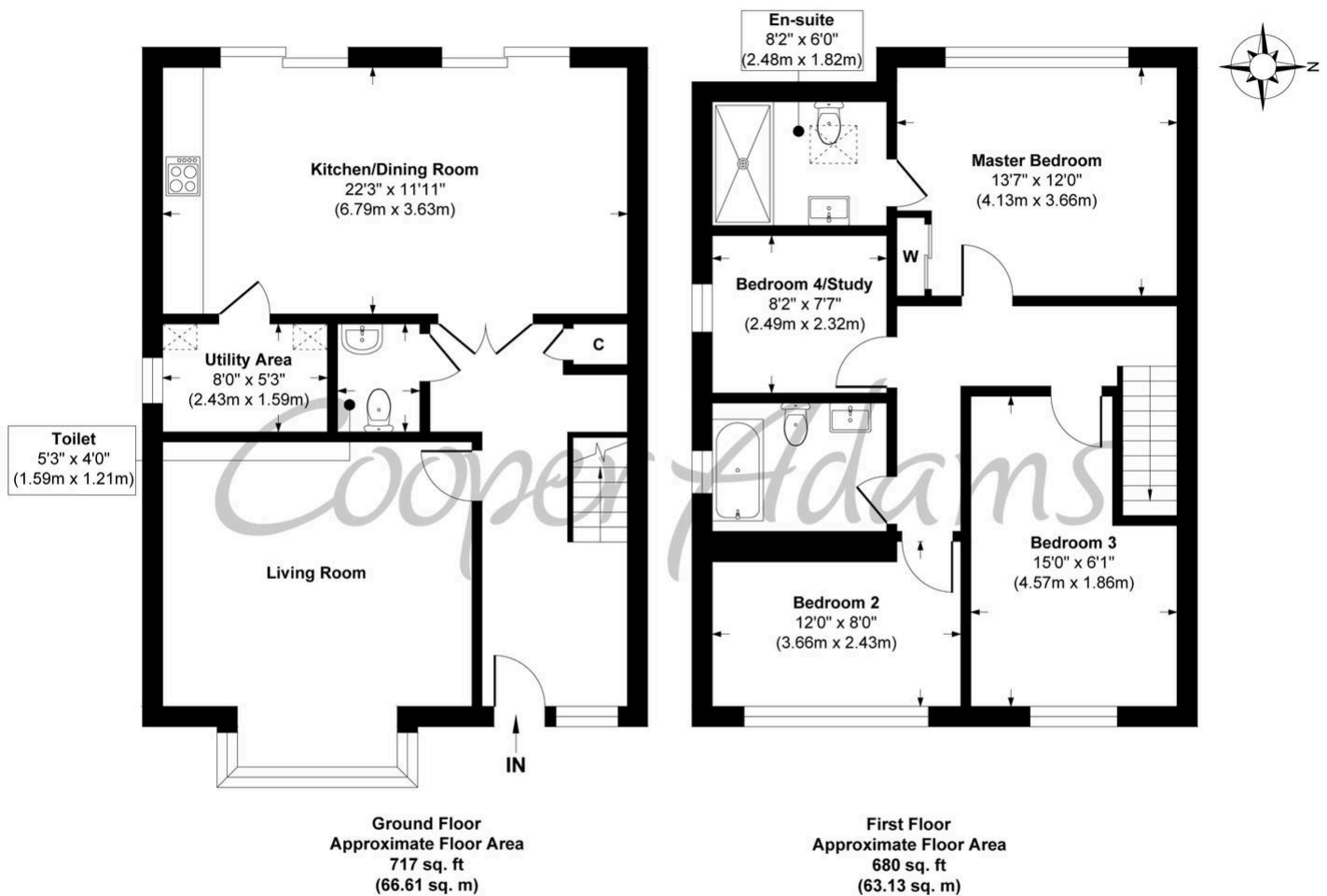


Angmering, a charming village near the South Downs, offers shops, schools, a health club, and a golf course. Beaches are within 2 miles, and nearby shopping is available in Rustington and Worthing.

Angmering station connects to London, Brighton, and more, with Gatwick 40 miles away and easy access to the A27 and A24 roads.



Cooper Adams



Arundel Road
Approx. Gross Internal Floor Area 1397 sq. ft / 129.74 sq. m

Illustration for identification purposes only, measurements are approximate, not to scale

Copyright © Cooper Adams

This material is protected by laws of copyright which is owned by Cooper Adams. Whilst every attempt has been made to ensure the accuracy of these details and floor plan contained here, they do not constitute any offer or contract or part thereof. All measurements are always maximum measurements into bay windows, alcoves and for L shaped rooms. No guarantee is given on total square footage taken from the floor plan. The details, pictures, maps and floor plans are for illustration purposes only and not to scale. Any appliances and/or services have not been tested. Cooper Adams is a trading name of Cooper Adams Estates Limited registered at Bishopstone. Registered in England and Wales. Our registered number is 07127482. Our VAT Number is 982847172.

Lettings | Sales | Free valuations | Land & New Homes | Mortgages

FULL DETAILS OF THE MATERIAL INFORMATION ARE ON OUR WEBSITE - VIEWING STRICTLY BY APPOINTMENT WITH COOPER ADAMS

FOR MORE PHOTOS AND TO BOOK A VIEWING VISIT OUR WEBSITE - Tel: 01903 791 792 - www.cooper-adams.com