



## Foxdale Drive, Angmering, BN16 4HF

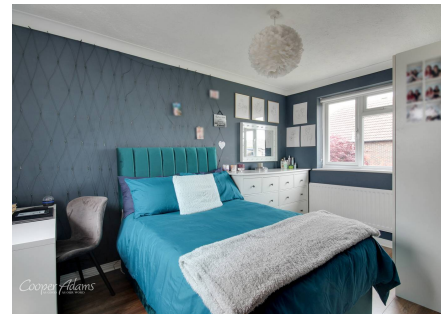
Freehold

Sunny rear garden • Open plan kitchen/dining room • Quiet location • Angmering mainline station and convenience shops approx 0.6 miles • Garage and Driveway for three cars • Four-bedroom detached house

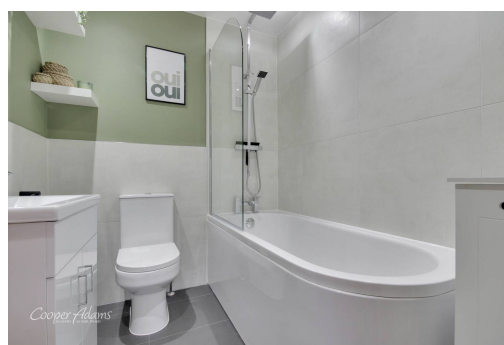
*Cooper Adams*

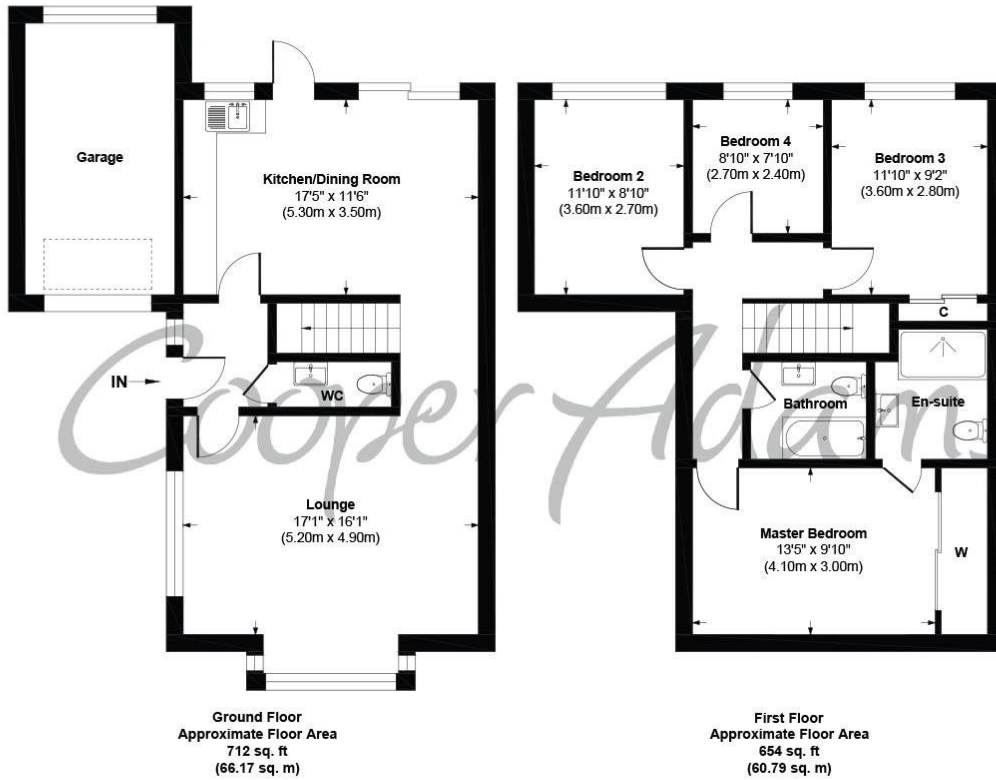
BEAUTIFUL, DETACHED, HIGHLY SOUGHT AFTER LOCATION. This beautifully decorated and very well maintained four-bedroom detached home, located on one of the villages most sought after locations The Dell development. The property offers a perfect blend of modern living and clean and sleek lifestyle. Being move in ready, bring your boxes and furniture and you're ready to go! The living room floods with natural light from the bay windows and offers a cosy space for relaxation after a long day and the open-plan kitchen/dining room creates an inviting space for family meals and entertaining. Upstairs your master bedroom features a convenient ensuite, you then have the family bathroom and three other great size bedrooms. Your peaceful and secluded garden is accessible from your dining room perfect for hosting family and friends and making unforgettable memories. Alleviate the stress of parking with a driveway for 3 cars and a garage.

This property is "Legally Prepared." Cooper Adams has gathered key documents, including the title, plans, property forms, warranties, and EPC. Buyers must request these before offering.



Angmering, a charming village near the South Downs, offers shops, schools, a health club, and a golf course. Beaches are within 2 miles, and nearby shopping is available in Rustington and Worthing. Angmering station connects to London, Brighton, and more, with Gatwick 40 miles away and easy access to the A27 and A24 roads.





**Foxdale Drive, Angmering, West Sussex, BN164HF**  
**Approx. Gross Internal Floor Area 1367 sq. ft / 126.96 sq. m**

Illustration for identification purposes only, measurements are approximate, not to scale

Copyright © Cooper Adams