

CORNWALL ESTATES

PADSTOW



CORNWALL ESTATES

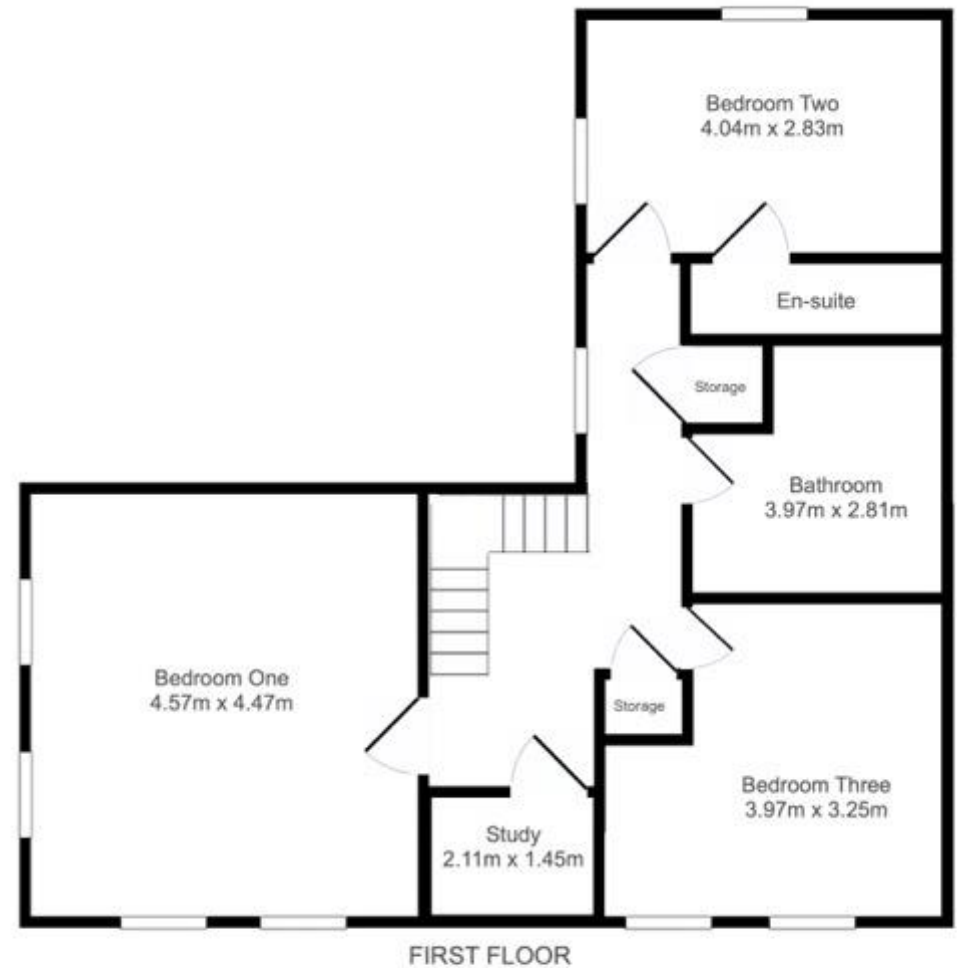
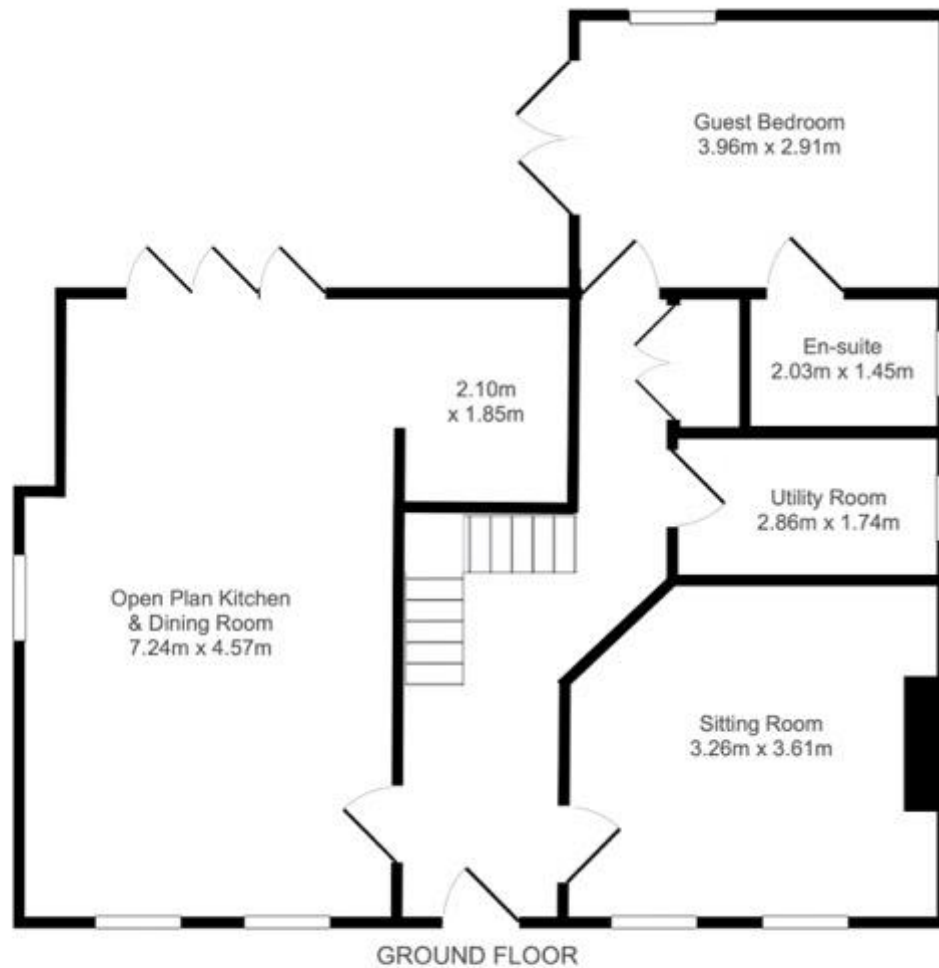
PADSTOW

**The Hermitage, Rumford,
PL27 7SS**

£895,000 Freehold

- Detached family home
- Constructed in 2012
- Four bedrooms, three bathrooms
- Bespoke handmade kitchen
- Adjoining open countryside
- Ample parking
- Solid oak doors, oak staircase
- Landscaped gardens





OVERALL FLOOR AREA approx 171 square metres 1840 square feet

IMPORTANT NOTICE

Cornwall Estates (Padstow) Ltd give notice that; These particulars do not constitute any contract or offer and are for guidance only and are not necessarily comprehensive. The accuracy of the particulars is not guaranteed and should not be relied upon as representations of fact. Cornwall Estates (Padstow) Ltd, their clients nor any joint agents have authority to make any representations about the property and any information given is without responsibility on the part of the agents, sellers or lessor(s). Any intended purchaser should satisfy themselves by inspection or otherwise of the statements contained in these particulars. Any areas distances or measurement are approximate. Assumptions should not be made that the property has all the necessary planning permissions and building regulations. We have not tested any services, equipment or facilities. Viewing by appointment only. Purchasers should check the availability for viewing before embarking on any journey to view or incurring travelling expenses. Some photographs may be taken with a wide-angle lens.



Sometime a home's name just fits it perfectly, and this is certainly the case with The Hermitage. Tucked into a wonderful plot with views over open fields to the rear, this lovely home is a world away from the busy beaches which lay only a few miles from its door. Built in 2012, a feeling of seclusion and privacy imbues its solid walls and creates a wonderfully comfortable and relaxing retreat.

The welcoming driveway draws you up to the attractive frontage, where the stone exterior is highlighted by modern sash windows. A green oak canopy porch provides shelter for the bespoke front door, which opens into a bright hallway with tiled floor. Oak accents flow throughout this home, giving a wonderful warmth and continuity throughout. A superb open plan kitchen and dining room open out to the left, flooded by natural light which pours through high level Velux windows and large bi-fold doors. This is a naturally sociable space which flows out to the sheltered rear patio area, perfect for outdoor entertaining. Across the hallway is a separate sitting room, complete with log burner, which offers a cosy space for those cooler evenings. Following the hallway, there is a useful utility room and downstairs WC. Continue through the inner hall and enter into a bright guest bedroom, this is a versatile room with a modern ensuite wet room and fitted kitchenette; with French doors leading out onto the rear patio and the ability to use ramped entry this is a perfect space for extended family accommodation or various other options.

Proceeding up the oak staircase, lit beautifully by windows above, you arrive at the Hermitages upper landing. Once again, a feeling of space and light fill this area, enhanced by a beautiful feature window overlooking the upper gardens. Arched oak doorways create character and atmosphere and hide away generous storage cupboards. This upper floor houses three handsome bedrooms, including a superb master with exposed oak beams and vaulted ceilings. A large modern bathroom with free standing bath services two bedrooms, while the double to the rear enjoys an ensuite. The Hermitages generous proportions continue outside, where the protected rear terrace leads to a wonderfully open landscaped upper garden with views across open countryside. With solar panels which feed all hot water to the property, parking for several vehicles and a large shed with power and lights, this superb home beautifully combines comfort, style, and practicality.

ENTRANCE

Green oak canopy porch, front entrance door to;

HALLWAY

Delabole slate flooring, oak and glass staircase to the first floor, recessed spotlights, solid oak doors throughout. Understairs recess housing alarm control panel.

KITCHEN & DINING ROOM

Delabole slate flooring. Bi-fold doors opening to the rear patio garden. Windows to the side and front elevations. Bespoke handmade kitchen using oak and tulip wood and granite worksurfaces over. Under unit lighting. Double Belfast sink. Integrated dishwasher and microwave, Falcon double oven range cooker with five burner hob, tiled splashback and stainless-steel extractor over, recessed spotlights, beamed ceiling. Central island with power points.

SITTING ROOM

Two windows overlooking the front, engineered oak flooring, ceiling light and picture light. Recessed fireplaced with slate hearth and plinth granite lintel over.

UTILITY ROOM

Window to the side. A range of base & wall units with Belfast sink. Tiled flooring, space and plumbing for automatic washing machine and tumble dryer, low level WC.

INNER HALL

Built in cupboard housing Worcester gas boiler (LPG). Hot water cylinder, solar panel control system.



GUEST BEDROOM

French doors to the rear patio garden. Base unit with stainless steel sink. Door to;

EN-SUITE WET ROOM

Window to the rear. Walk in shower, fully tiled walls and flooring. Fitted wash hand basin, low level WC, heated towel rail.

Stairs to first floor; Landing Attractive feature window overlooking the rear garden. Built in airing cupboard, storage cupboard with arched door. Doors to;

BEDROOM TWO

Windows to the side and rear elevations, ceiling light, radiator, television point, feature arched door.

EN-SUITE

Shower enclosure, fitted wash hand basin with unit underneath, low level WC, tiled flooring, recessed ceiling spotlights, Velux roof light, heated towel rail.

FAMILY BATHROOM

Shower enclosure, bath, low level WC, pedestal wash hand basin, tiled flooring, heated towel rail, recessed ceiling spotlights, two Velux roof lights, half panelled walls.

BEDROOM THREE

Window to the front elevation, central heating radiator, television point, ceiling light, access to the loft.

STUDY

Velux roof light, window to the side, radiator, television point.

MASTER BEDROOM

High vaulted ceiling and exposed oak beams, feature porthole window, windows to the front and side elevations. Radiator, television point.

PARKING

Driveway with room for parking four vehicles. Access either side of the house to the rear.

REAR GARDENS

Arranged on two levels the lower tier comprises a sheltered and private patio garden extending around the house with Cornish stone walling. Steps lead to the higher tier which is laid to lawn with flower bed borders. Large timber storage shed with power & light.

PROPERTY CONSTRUCTION

Traditional concrete block cavity wall construction. Stone facing to the front, high performance glazing.

SERVICES

Mains electricity. Mains water supply. Private septic tank sewerage. LPG gas underfloor heating to the ground floor. Central heating radiators to the first floor, gas boiler. Solar panels heat the hot water. Council tax band E.

BROADBAND & MOBILE PHONE COVERAGE

Superfast broadband available. No voice or data coverage.













CORNWALL
ESTATES

P A D S T O W

5 Broad Street

Padstow

PL28 8BS

01841 550999

sales@cornwallestates.co.uk