



5 White House Drive, Merrow, Guildford, Surrey, GU1 2SU

 Chantryes  
& Pewleys





4 bedrooms  
Family bathroom & en-suite shower room  
Living room  
Dining room  
Study  
Kitchen & utility room  
Cloakroom  
Driveway & garage  
Freehold  
Council tax band G. EPC D.

Four-bedroom family home, requiring modernisation throughout, set close to excellent schools.

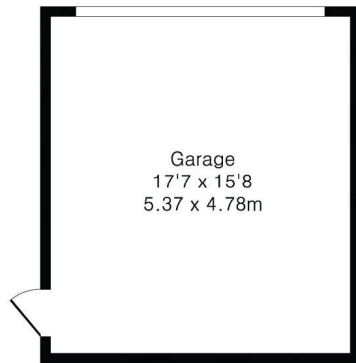
Conveniently situated at the end of a small cul-de-sac in a corner plot, 5 White House Drive is a four-bedroom detached family home that now requires modernisation throughout. Owned by our clients since it was built around 1986, the property offers considerable scope to enlarge the existing footprint subject to the relevant consents, potentially utilising the space currently in between the house and the detached double garage.



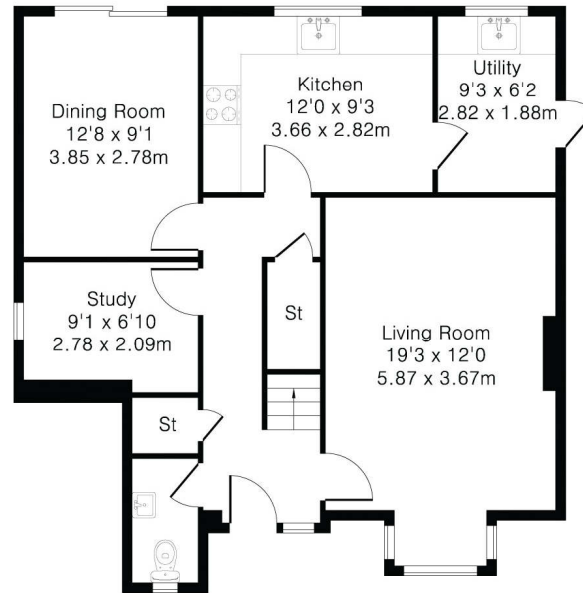
Merrow shops are within easy reach and provide a splendid range of local shops including an M&S and chemist. Schooling is excellent with several within walking distance including Merrow Infant School, Merrow Junior School, St Thomas of Canterbury, Boxgrove Primary, St Peters and George Abbot. Guildford with its famous cobbled High Street and Castle is located approximately 2 miles away, providing an extensive range of leisure and recreational facilities with a wide range of shops, restaurants, the Yvonne Arnaud Theatre, a cinema complex, G Live, Surrey Sports Park and Spectrum Leisure Centre.

Transport links are excellent with a regular bus service into Guildford and 2 stations including the mainline station connecting to London Waterloo in approximately 37 minutes. The A3 is closely linking to the M25 motorway, Gatwick and Heathrow Airports.

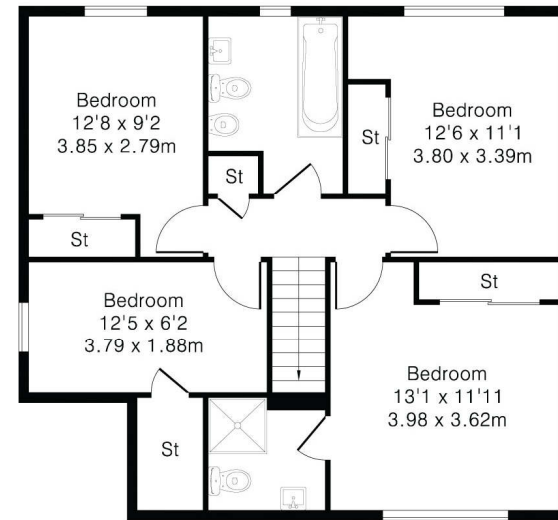
**Approximate Gross Internal Area 1401 sq ft - 131 sq m**  
 Garage Area 276 sq ft – 26 sq m



Garage



First Floor



Second Floor

