



## Claypath Court

Durham DH1 1QE

£850 Per Calendar Month







This footer paragraph is an example only and should not be relied upon as complying with current legislation. These particulars, whilst believed to be accurate are set out as a general outline only for guidance and do not constitute any part of an offer or contract. Intending purchasers should not rely on them as statements of representation of fact, but must satisfy themselves by inspection or otherwise as to their accuracy. No person in this firms employment has the authority to make or give any representation or warranty in respect of the property.





This footer paragraph is an example only and should not be relied upon as complying with current legislation. These particulars, whilst believed to be accurate are set out as a general outline only for guidance and do not constitute any part of an offer or contract. Intending purchasers should not rely on them as statements of representation of fact, but must satisfy themselves by inspection or otherwise as to their accuracy. No person in this firms employment has the authority to make or give any representation or warranty in respect of the property.

# Claypath Court

Durham DH1 1QE



- Over 55s only
- EPC RATING - C
- Stylish refitted bathroom

- City centre location
- Well presented throughout
- Spacious living room

- All amenities within walking distance
- Modern kitchen
- Generous double bedroom with wardrobes

Venture Properties are delighted to offer the opportunity to rent this much improved apartment situated in Claypath Court within the heart of Durham City. Claypath Court provides an ideal location for OVER 55's with luxurious communal living areas, a caretaker, lift to all floors, car parking, secure entry system and city centre amenities on your doorstep.

The floor plan comprises of an entrance hallway with storage cupboard, spacious reception room with access to a balcony, modern refitted kitchen with appliances, double bedroom with built in wardrobes and stylish refitted bathroom/WC. The property also comes with parking.

Available immediately, early viewing is recommended to avoid disappointment.

## Entrance Hallway

Welcoming hallway with airing cupboard and useful storage cupboard.

## Living Room

17'3" x 8'5" (5.27 x 2.59)

Spacious reception room with access to a balcony, a feature fireplace housing an electric fire and electric heater.

## Kitchen

9'10" x 7'2" (3.01 x 2.19)

Modern refitted kitchen comprising of a range of fitted units having contrasting worktops incorporating a stainless steel sink and drainer unit with mixer tap, a built in oven and hob with extractor over, an integrated fridge and freezer, along with plumbing for a washing machine. Further features include a UPVC double glazed window, tiled splashbacks, wood flooring and electric heater.

## Bedroom

16'2" x 8'4" (4.93 x 2.56)

Generous double bedroom with a UPVC double glazed window, fitted wardrobes and electric heater.

## Bathroom/WC

8'4" x 5'6" (2.55 x 1.68)

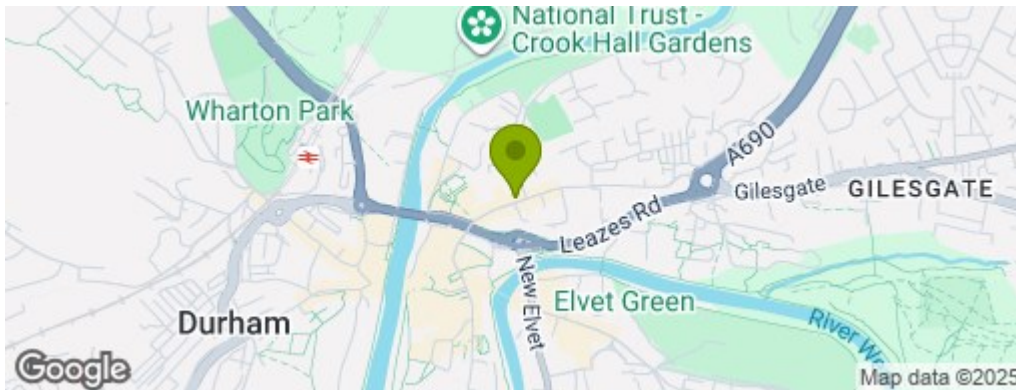
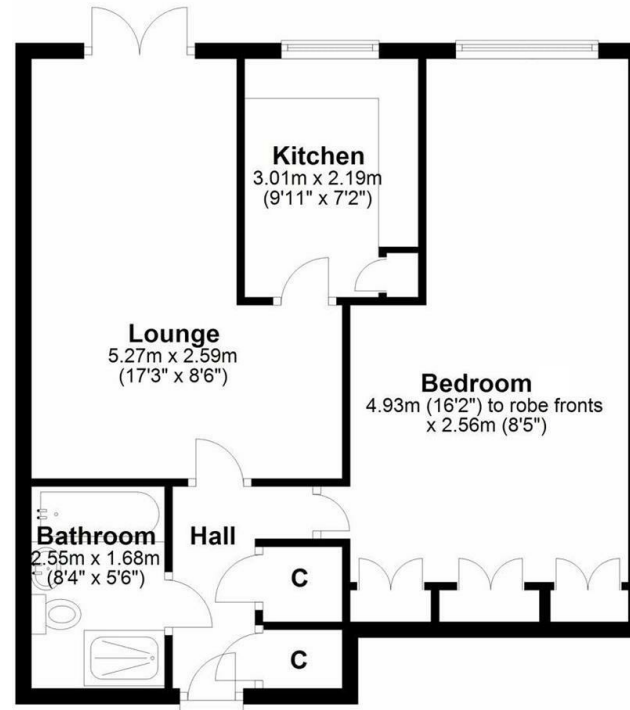
Stylish refitted bathroom comprising of a bath, double cubicle with mains fed shower, hand wash basin and WC set to a vanity unit, fully tiled walls and flooring, heated towel rail and extractor.

## EXTERNAL

The property has a private balcony and communal parking.

[www.venturepropertiesuk.com](http://www.venturepropertiesuk.com)

## Ground Floor



## Property Information

0191 372 9797

1 Whitfield House, Durham, DH7 8XL  
[durham@venturepropertiesuk.com](mailto:durham@venturepropertiesuk.com)