



Seventh Avenue

Chester Le Street DH2 2BP

£795 Per Calendar Month





This footer paragraph is an example only and should not be relied upon as complying with current legislation. These particulars, whilst believed to be accurate are set out as a general outline only for guidance and do not constitute any part of an offer or contract. Intending purchasers should not rely on them as statements of representation of fact, but must satisfy themselves by inspection or otherwise as to their accuracy. No person in this firm's employment has the authority to make or give any representation or warranty in respect of the property.

Seventh Avenue

Chester Le Street DH2 2BP



Located on Seventh Avenue in Chester Le Street, this immaculately presented three-bedroom semi-detached house is a true gem waiting to be discovered.

Upon entering, you are greeted by a spacious lounge/dining room, perfect for entertaining guests or relaxing with your loved ones. The fitted kitchen is a chef's dream, offering ample space to unleash your culinary skills.

This property boasts good-sized bedrooms, ideal for creating your own personal sanctuary or accommodating a growing family. The fitted white family bathroom adds a touch of luxury to your daily routine.

With parking, you'll never have to worry about finding a spot after a long day. The large rear garden is a blank canvas, ready for you to create your own outdoor oasis or enjoy al fresco dining on warm summer evenings.

Benefiting from UPVC double glazing and gas central heating, this home ensures comfort and energy efficiency all year round.

Don't miss out on the opportunity to make this fully refurbished house your new home. Available immediately, this property is a rare find that ticks all the boxes for modern living.

Freehold
Council tax band A
EPC to be confirmed

ENTRANCE HALL

LOUNGE
15'4" x 12'6" (4.67m x 3.81m)

DINING ROOM
10'5" x 10' (3.18m x 3.05m)

KITCHEN
15' x 8'11" (4.57m x 2.72m)

FIRST FLOOR

BEDROOM 1
12'2" x 12' (plus robes) (3.71m x 3.66m (plus robes))

BEDROOM 2
15'7" x 9'10" (4.75m x 3.00m)

BEDROOM 3
10'4" x 8'1" (3.15m x 2.46m)

BATHROOM/WC

EXTERNAL

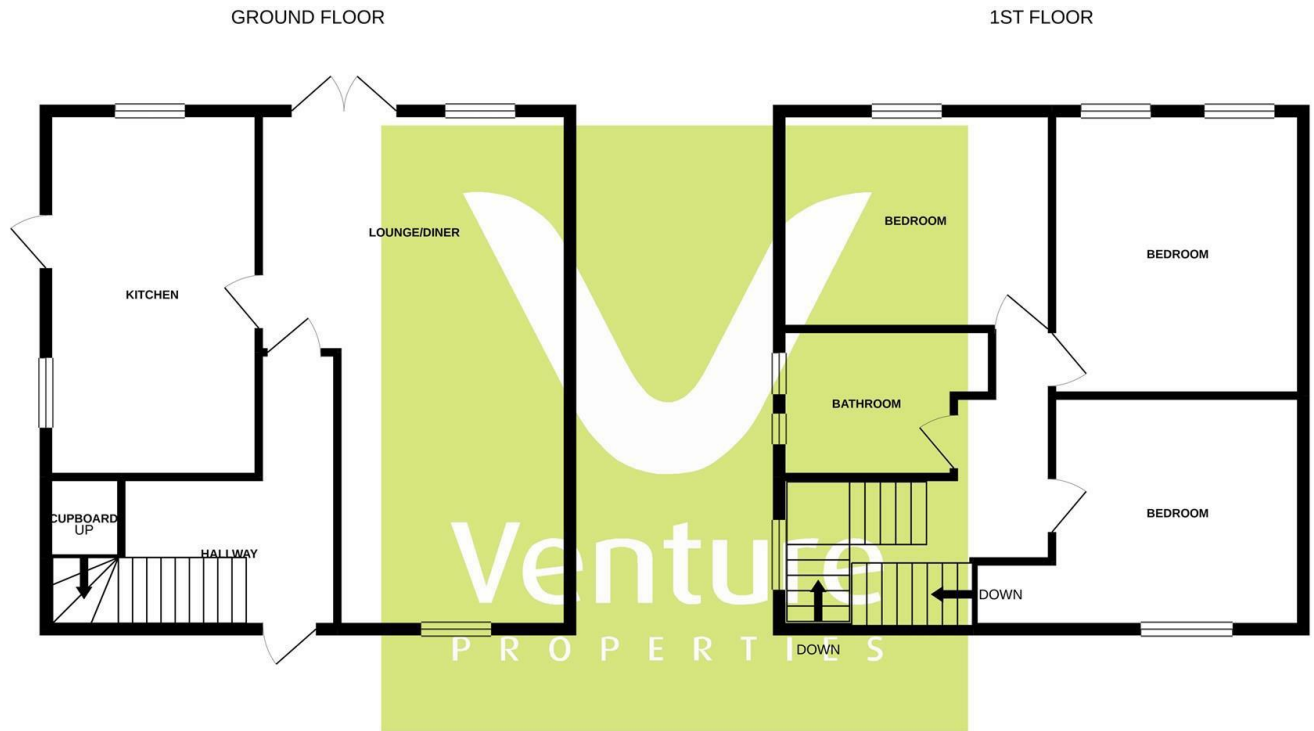
HOLDING DEPOSIT AND DEPOSIT

Holding Deposit And Deposit - All of our rental properties require a Holding Deposit equivalent to 1 week's rent. The Tenant is entitled for this Holding Deposit to be repaid within 15 calendar days of their application proceeding. However, in most cases we hope to repay this to the Tenant on the day you move in and this will be deducted from your first month's rent. This will need to be agreed with the Tenant during the application process.

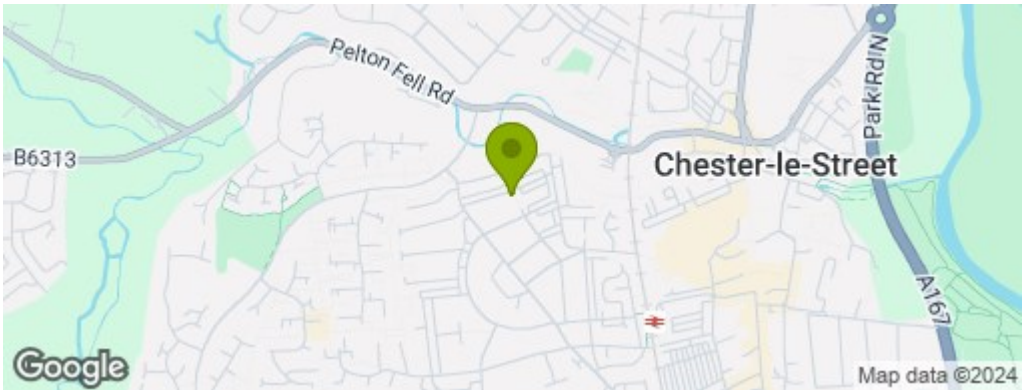
You will lose your Holding Deposit if any of the following occurs:

- 1.You give us false or misleading information. For example, incorrect salary/income details or you fail to tell us about a CCJ.
- 2.You fail a Right to Rent check and are not eligible to reside in the UK.
- 3.You withdraw your application.
- 4.You drag your feet during the application process.

All of our rental properties will require a deposit, payable on the day you move in, equivalent to 5 weeks' rent.



Whilst every attempt has been made to ensure the accuracy of the floorplan contained here, measurements of doors, windows, rooms and any other items are approximate and no responsibility is taken for any error, omission or mis-statement. This plan is for illustrative purposes only and should be used as such by any prospective purchaser. The services, systems and appliances shown have not been tested and no guarantee as to their operability or efficiency can be given.
Made with Metropix ©2021.



Property Information