



12 Ware Road | Hertford | SG13 7HH

£2,000 pcm

A well presented three bedroomed townhouse with two reception rooms, situated in close proximity to the town station and easy walk to the East rail station. Impressive 18' kitchen/diner and main bedroom with South facing sun balcony. Small sun patio to rear and off st parking bay. Two bathrooms and a ground floor cloakroom. Unfurnished. EPC band -C council tax band-Deposit equal to one month rent

- 3 bedroom townhouse
- Sun balcony and outside patio
- Two bathrooms
- Impressive kitchen/diner
- Cloakroom



Approximate Gross Internal Area
100.08 sq m / 1077.25 sq ft

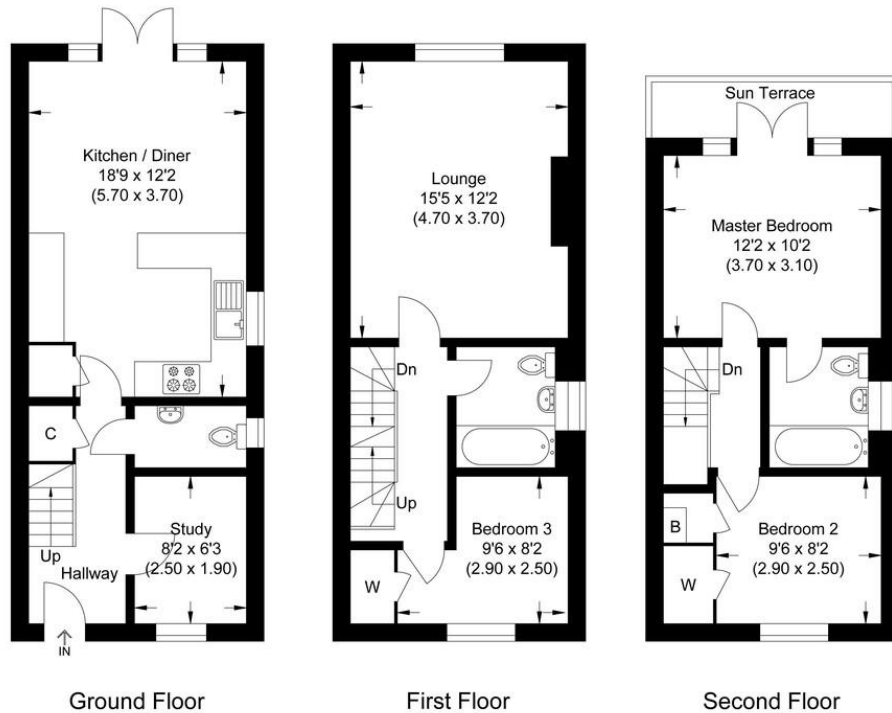


Illustration for identification purposes only, measurements are approximate, not to scale.

Contact Details

6 Millbridge
Hertford
Hertfordshire
SG14 1PY

www.shepherdsofhertford.com
lettings@shepherdsofhertford.co.uk
01992 551955

Approximate Gross Internal Area
100.08 sq m / 1077.25 sq ft



Agents Note: Whilst every care has been taken to prepare these sales particulars, they are for guidance purposes only. All measurements are approximate are for general guidance purposes only and whilst every care has been taken to ensure their accuracy, they should not be relied upon and potential buyers are advised to recheck the measurements