

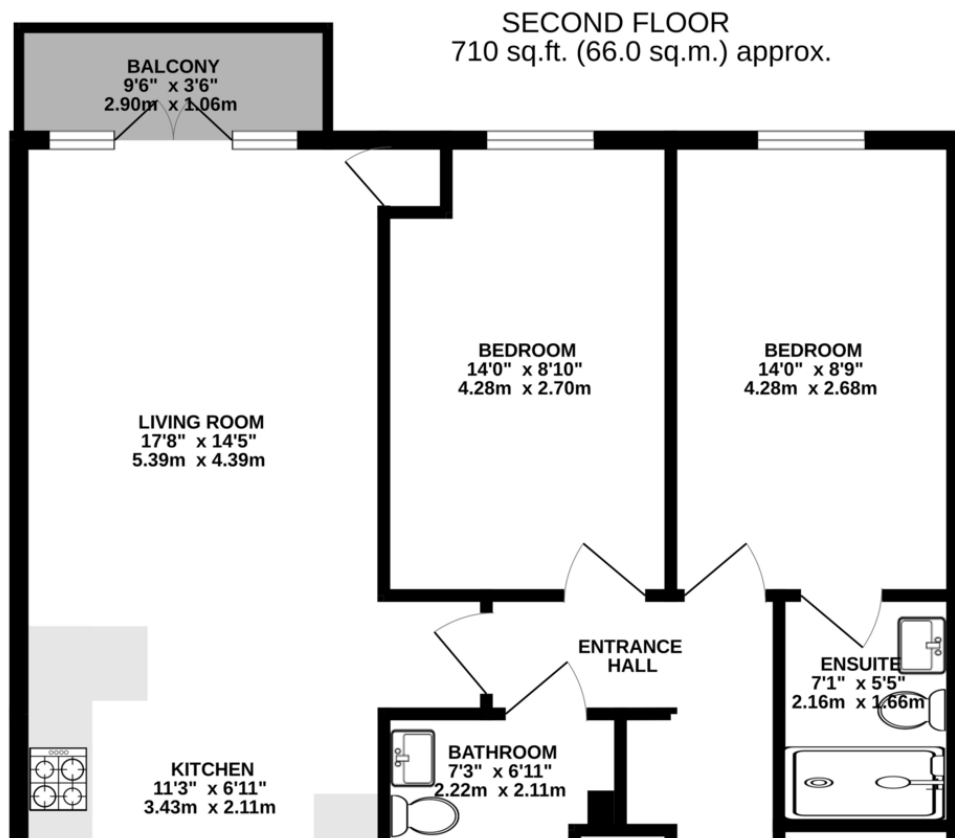


16 Kingsmead Court | Hertford | SG13 7LR

£1,500 pcm

Short Term Let available 3 - 6 months. A spacious modern two double bedroomed apartment with two bathrooms on the second floor. Secure gated parking space and lift facility. 17' x 14 living room with balcony. Easy access to mainline rail stations and main trunk roads. Unfurnished. EPC band- B Council tax band -D

- Two double bedrooms
- Spacious 17' Lounge
- balcony
- Two bathrooms
- Gated allocated parking bay



Contact Details

6 Millbridge
Hertford
Hertfordshire
SG14 1PY

www.shepherdsfhertford.com
lettings@shepherdsfhertford.co.uk
01992 551955

Score	Energy rating	Current	Potential
92+	A		
81-91	B	85 B	85 B
69-80	C		
55-68	D		
39-54	E		
21-38	F		
1-20	G		

Agents Note: Whilst every care has been taken to prepare these sales particulars, they are for guidance purposes only. All measurements are approximate are for general guidance purposes only and whilst every care has been taken to ensure their accuracy, they should not be relied upon and potential buyers are advised to recheck the measurements