



4 Nags Head Close | Hertford | SG13 7FJ

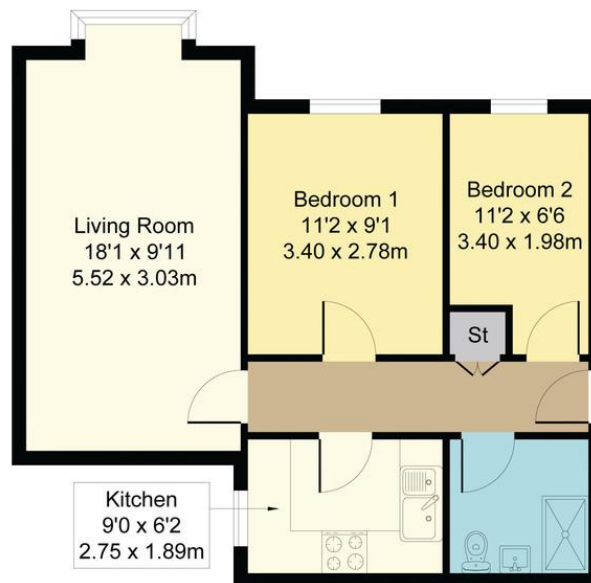
£1,150 pcm

***** PLEASE EMAIL TO ARRANGE A VIEWING***** A well presented two bed roomed ground floor apartment situate on the East side of town, equi-distant to both Hertford and Ware town centres. Extensively refurbished with modern floors, kitchen and luxury walk in shower room. Boasting gas central heating. Allocated parking. Unfurnished. EPC band - C. Council tax band - C. Deposit will be equal to one month rent.

- Modern two bed roomed apartment
- Refurbished throughout
- Gloss white kitchen
- Luxury walk in shower
- Gas central heating



Approximate Gross Internal Area
528 sq ft - 49 sq m



Contact Details

6 Millbridge
Hertford
Hertfordshire
SG14 1PY

www.shepherdsfhertford.com
lettings@shepherdsfhertford.co.uk
01992 551955



Agents Note: Whilst every care has been taken to prepare these sales particulars, they are for guidance purposes only. All measurements are approximate and for general guidance purposes only and whilst every care has been taken to ensure their accuracy, they should not be relied upon and potential buyers are advised to recheck the measurements