



CORNWALL HOUSE POPLAR GROVE

NEW MALDEN, KT3 3DD

£449,950
LEASEHOLD

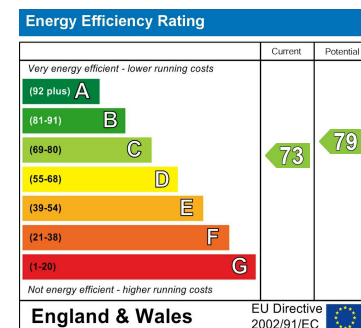
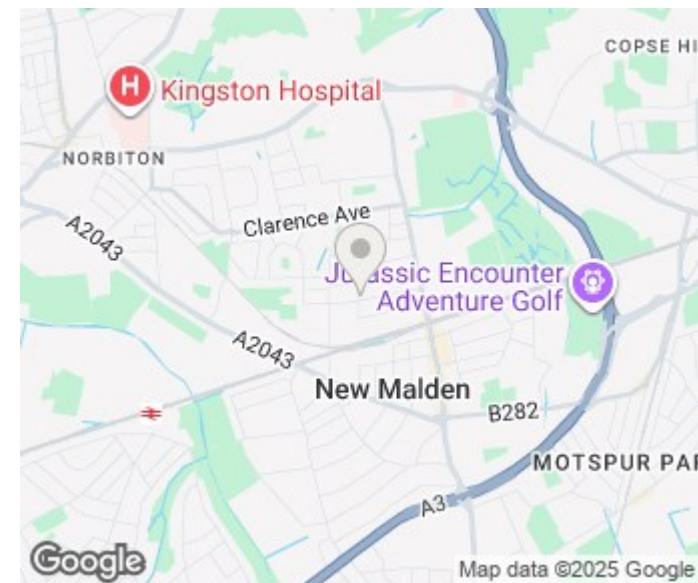
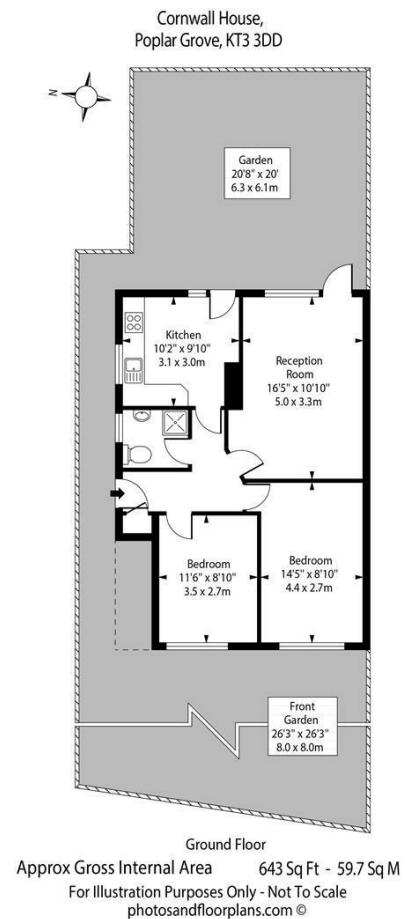
Welcome to this charming two-bedroom apartment located on the ground floor of a desirable building in the sought-after Poplar Grove area of New Malden. Spanning an impressive 643 square feet, this property offers a comfortable and inviting living space, perfect for individuals or small families.

As you enter, you will find a well-proportioned reception room that serves as the heart of the home, providing a warm and welcoming atmosphere for relaxation and entertaining. The apartment features two spacious bedrooms, each designed to offer a peaceful retreat at the end of the day. The well-appointed bathroom ensures convenience and comfort for all residents.

One of the standout features of this property is the delightful patio garden, which provides an excellent outdoor space for enjoying the fresh air, hosting gatherings, or simply unwinding with a good book. The garden is a rare find in apartment living and adds a lovely touch of nature to your home.



ELIZABETH WIGHTWICK
YOUR BESPOKE PROPERTY AGENT



Agents Note: Whilst every care has been taken to prepare these particulars, they are for guidance purposes only. All measurements are approximate and are for general guidance purposes only and whilst every care has been taken to ensure their accuracy, they should not be relied upon and potential buyers/tenants are advised to recheck the measurements

Wimbledon Village
Unit 6 (2nd Floor)
2 Allington Close
Wimbledon Village
Wimbledon
London
KT3 3DN

020 3597 3484
info@elizabeth-wightwick.co.uk

