



22 LOWER DOWNS ROAD

LONDON, SW20 8QG

£2,795 PER MONTH

Nestled on the charming Lower Downs Road in London, this delightful three-bedroom house offers a perfect blend of comfort and convenience. The property boasts a generous living space of 950 square feet, making it an ideal home for families or professionals seeking a peaceful retreat in the city.

Upon entering, you will find two inviting reception rooms that provide ample space for relaxation and entertaining. The layout is both practical and welcoming, allowing for a seamless flow between the living areas. The well-appointed galley style kitchen makes it a delightful space for culinary enthusiasts.

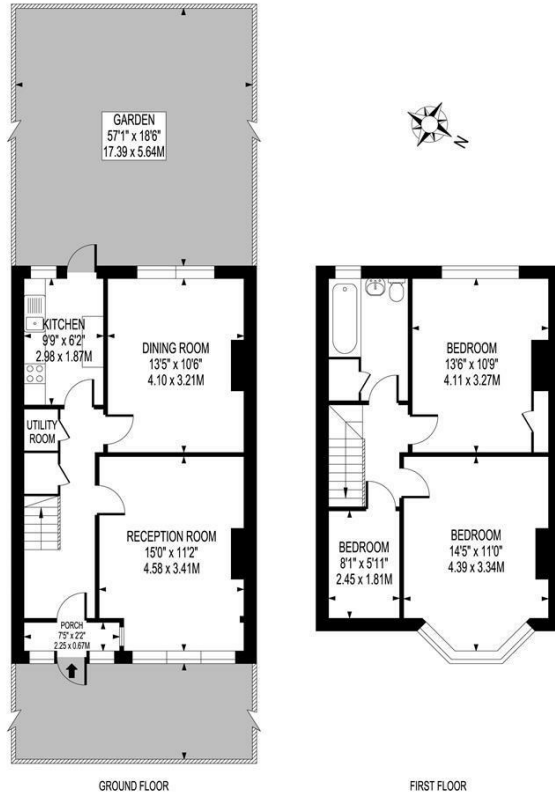
The three bedrooms are thoughtfully designed, offering a tranquil haven for rest and rejuvenation. The property features a well-maintained bathroom, ensuring that all your needs are met.



ELIZABETH WIGHTWICK
YOUR BESPOKE PROPERTY AGENT

LOWER DOWNS ROAD

APPROXIMATE GROSS INTERNAL FLOOR AREA : 950 SQ FT- 88.30 SQ M



FOR ILLUSTRATION PURPOSES ONLY
THIS FLOOR PLAN SHOULD BE USED AS A GENERAL OUTLINE FOR GUIDANCE ONLY AND DOES NOT CONSTITUTE IN WHOLE OR IN PART AN OFFER OR CONTRACT.
ANY INTENDING PURCHASER OR LESSEE SHOULD SATISFY THEMSELVES BY INSPECTION, SEARCHES, ENQUIRIES AND FULL SURVEY AS TO THE CORRECTNESS OF EACH STATEMENT.
ANY AREAS, MEASUREMENTS OR DISTANCES QUOTED ARE APPROXIMATE AND SHOULD NOT BE USED TO VALUE A PROPERTY OR BE THE BASIS OF ANY SALE OR LET.



Energy Efficiency Rating		
	Current	Potential
Very energy efficient - lower running costs		
(92 plus) A		
(81-91) B		
(69-80) C		
(55-68) D		
(39-54) E		
(21-38) F		
(1-20) G		
Not energy efficient - higher running costs		
England & Wales	EU Directive 2002/91/EC	

Agents Note: Whilst every care has been taken to prepare these particulars, they are for guidance purposes only. All measurements are approximate and are for general guidance purposes only and whilst every care has been taken to ensure their accuracy, they should not be relied upon and potential buyers/tenants are advised to recheck the measurements

Wimbledon Village
Unit 6 (2nd Floor)
2 Allington Close
Wimbledon Village
Wimbledon
London
KT3 3DN

020 3597 3484
info@elizabeth-wightwick.co.uk

