



## 9 THE MOAT NEW MALDEN, KT3 4SB

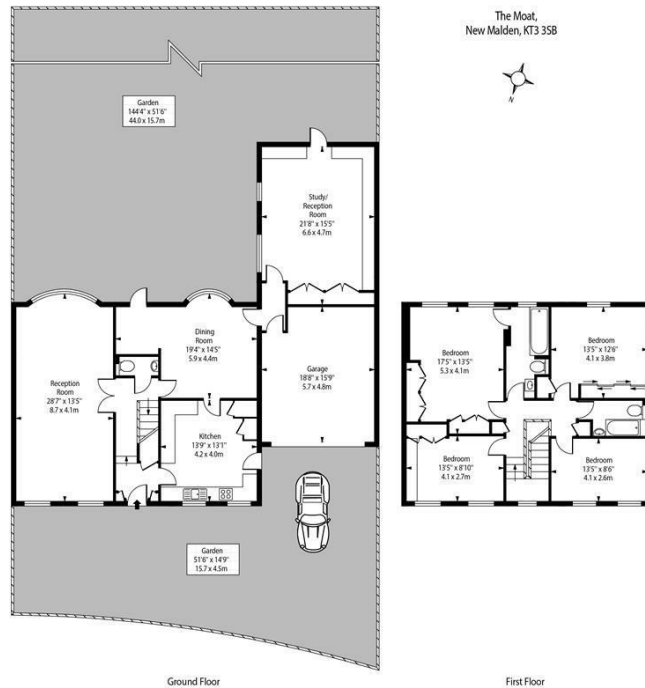
**£2,000,000**  
**FREEHOLD**

Welcome to The Moat which is set on a private road, just off Traps lane- a stunning detached house that offers the perfect blend of space, comfort, and style. This property boasts 4 spacious bedrooms, ideal for a growing family or those who love to have guests over, with two bathrooms.

As you step inside, you'll be greeted by not one but two inviting reception rooms as well as a library. The property has been owned by the same family for over 50 years. It is the perfect location to raise a family.

The property spans an impressive 2,304 sq ft, providing ample room for all your needs. The garage offers convenient parking or extra storage space, while the patio and landscaped garden including a summer house are perfect for enjoying a cup of tea on a sunny afternoon.



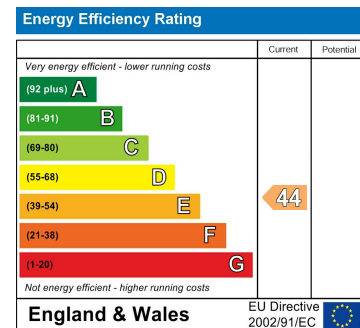


Ground Floor

First Floor

Approx Gross Internal Area 2460 Sq Ft - 228.5 Sq M  
(Including Garage)

For Illustration Purposes Only - Not To Scale  
photosandfloorplans.com ©



Agents Note: Whilst every care has been taken to prepare these particulars, they are for guidance purposes only. All measurements are approximate and are for general guidance purposes only and whilst every care has been taken to ensure their accuracy, they should not be relied upon and potential buyers/tenants are advised to recheck the measurements

Wimbledon Village  
Unit 6 (2nd Floor)  
2 Allington Close  
Wimbledon Village  
Wimbledon  
London  
KT3 3DN

020 3597 3484  
info@elizabeth-wightwick.co.uk

