



## THE RIDGWAY

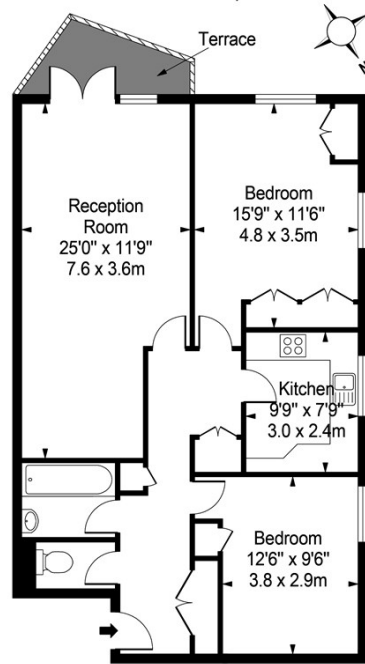
LONDON, SW19 4SF

£575,000

This well located two bedroom top floor flat is located in a prestigious block on The Ridgway. The property comprises; two double bedrooms, large living room with balcony, bathroom and kitchen. The property is CHAIN FREE and also benefits from a garage.



**Ridgway Court,  
Ridgway,  
Wimbledon, SW19**



Third Floor

Approx Gross Internal Area **880 Sq Ft - 81.8 Sq M**

For Illustration Purposes Only - Not To Scale  
photosandfloorplans.com ©



Energy Efficiency Rating		Current	Potential
Very energy efficient - lower running costs			
(92 plus) A			
(81-91) B			
(69-80) C			
(55-68) D		65	78
(39-54) E			
(21-38) F			
(1-20) G			
Not energy efficient - higher running costs			
<b>England &amp; Wales</b>		EU Directive 2002/91/EC	

Agents Note: Whilst every care has been taken to prepare these particulars, they are for guidance purposes only. All measurements are approximate and are for general guidance purposes only and whilst every care has been taken to ensure their accuracy, they should not be relied upon and potential buyers/tenants are advised to recheck the measurements

Wimbledon Village  
Unit 6 (2nd Floor)  
2 Allington Close  
Wimbledon Village  
Wimbledon  
London  
KT3 3DN

020 3597 3484  
info@elizabeth-wightwick.co.uk

