



DORA ROAD SW19 7EY

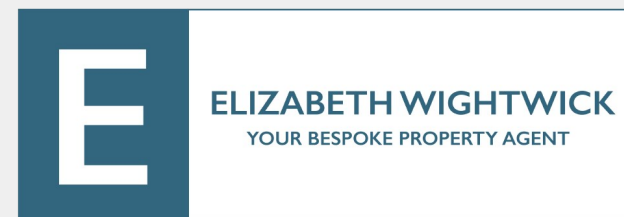
£4,500 PCM

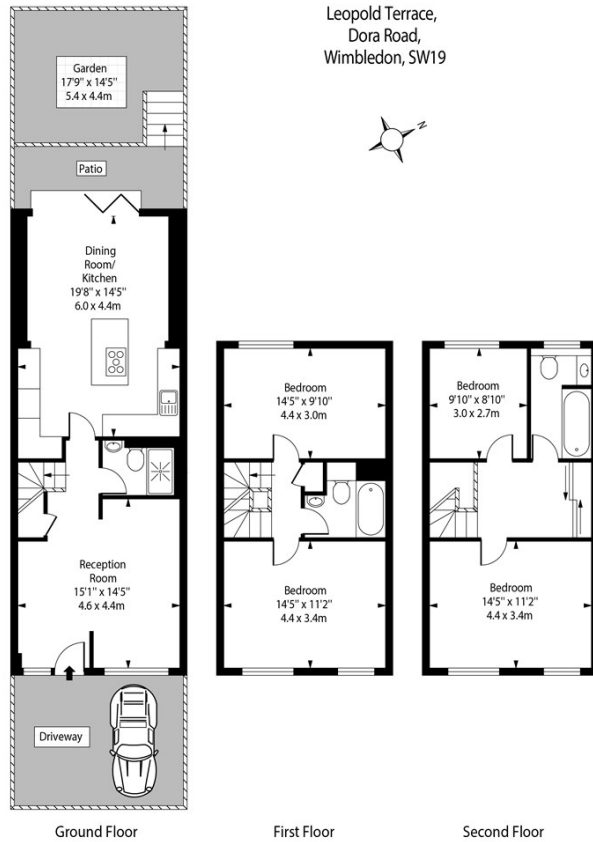
We are excited to present, this charming FOUR-bedroom town house in the very heart of the very much sought after Wimbledon location, equidistant from both Wimbledon Village and Wimbledon Town Centre. Moments from BISHOP GILPIN primary school.

The property has been comprehensively refurbished. Offering an EXCEPTIONAL CONTEMPORARY open plan living style, with a high-quality finish, courtyard GARDEN, and off-street PARKING for two cars.

This superbly designed, newly built property comprises of FOUR bedrooms with integrated storage spaces, three bathrooms, TWO reception rooms filled with natural light and a superb fully integrated kitchen.

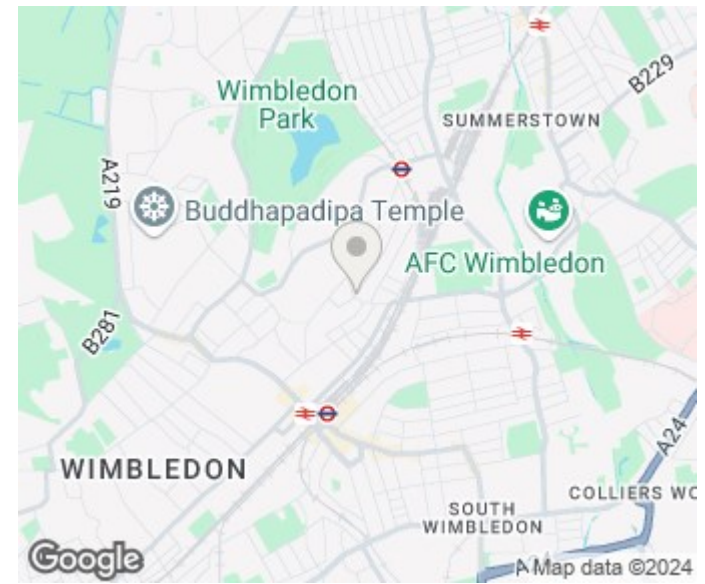
Further benefits include and EV charger, double glazing throughout, gas central heating and remote control dimmer lighting system on the ground floor.





Leopold Terrace,
Dora Road,
Wimbledon, SW19

Approx Gross Internal Area 1385 Sq Ft - 128.7 Sq M
For Illustration Purposes Only - Not To Scale
photosandfloorplans.com ©



Energy Efficiency Rating		
	Current	Potential
Very energy efficient - lower running costs		
(92 plus) A		
(81-91) B		
(69-80) C		
(55-68) D		
(39-54) E		
(21-38) F		
(1-20) G		
Not energy efficient - higher running costs		
England & Wales	EU Directive 2002/91/EC	

Agents Note: Whilst every care has been taken to prepare these particulars, they are for guidance purposes only. All measurements are approximate and are for general guidance purposes only and whilst every care has been taken to ensure their accuracy, they should not be relied upon and potential buyers/tenants are advised to recheck the measurements

Wimbledon Village
Unit 6 (2nd Floor)
2 Allington Close
Wimbledon Village
Wimbledon
London
KT3 3DN

020 3597 3484
info@elizabeth-wightwick.co.uk

