



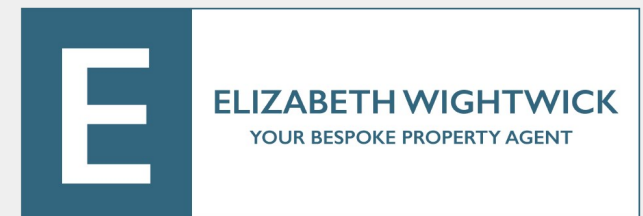
562A KINGSTON ROAD LONDON, SW20 8DR

£1,800 PCM

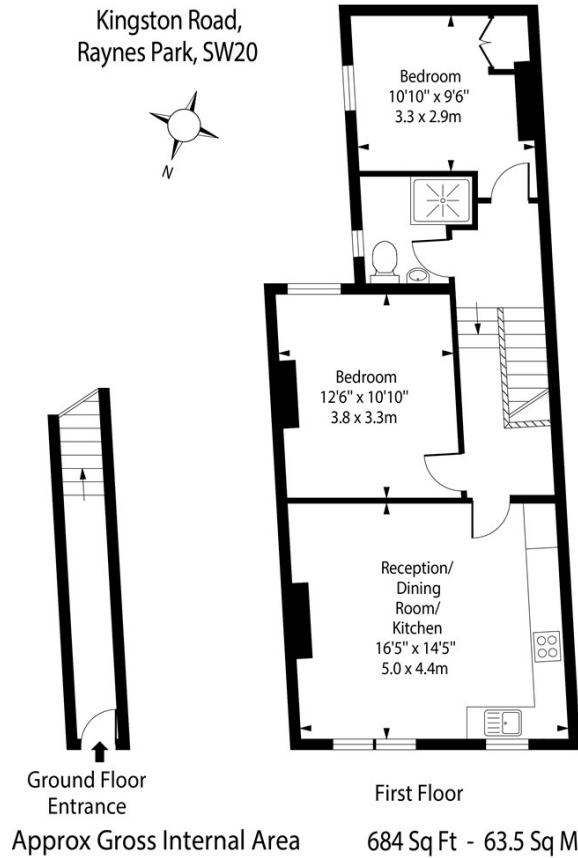
A stunning two bedroom open plan flat situated in the heart of Wimbledon, Fitted with a modern style kitchen and two large size bedrooms.

Close to great transport links and outstanding schools.

Offered UNFURNISHED



Kingston Road,
Raynes Park, SW20



For Illustration Purposes Only - Not To Scale
photosandfloorplans.com ©



Energy Efficiency Rating		
	Current	Potential
Very energy efficient - lower running costs		
(92 plus) A		
(81-91) B		
(69-80) C		
(55-68) D		
(39-54) E		
(21-38) F		
(1-20) G		
Not energy efficient - higher running costs		
England & Wales	EU Directive 2002/91/EC	

Agents Note: Whilst every care has been taken to prepare these particulars, they are for guidance purposes only. All measurements are approximate and are for general guidance purposes only and whilst every care has been taken to ensure their accuracy, they should not be relied upon and potential buyers/tenants are advised to recheck the measurements

Wimbledon Village
Unit 6 (2nd Floor)
2 Allington Close
Wimbledon Village
Wimbledon
London
KT3 3DN

020 3597 3484
info@elizabeth-wightwick.co.uk

