

Signal Building, Station Approach, Hayes, UB3 4FG

Guide Price £350,000

🛏 2 🚿 1 🛋 1

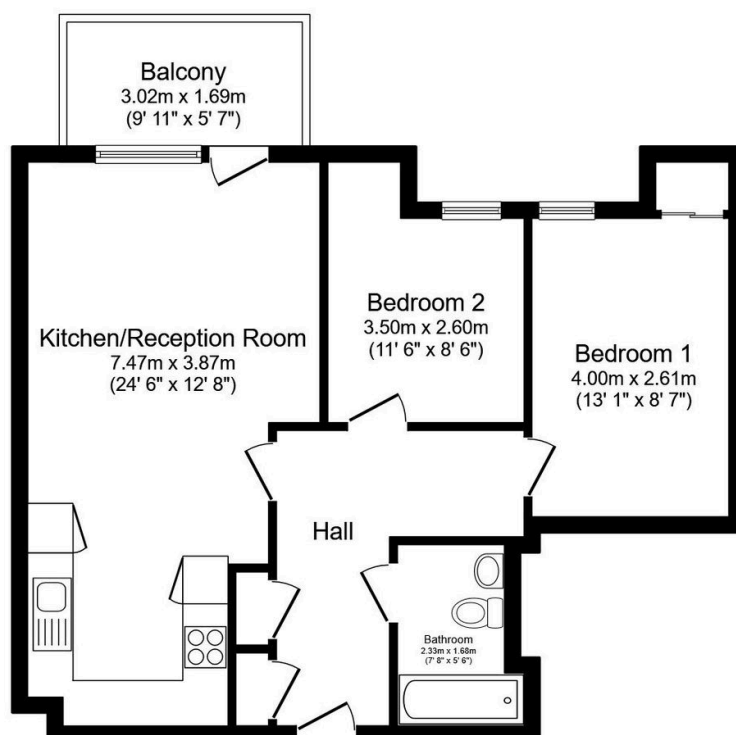


TWO BEDROOM - ONE BATHROOM - 4TH FLOOR - LIFT ACCESS - LEASEHOLD

Henry Wiltshire are proud to present this large Two-bedroom apartment situated adjacent to Hayes and Harlington station located on the 4th floor. This apartment is perfect for those wishing to commute. The apartment compromises of a Large lounge, open-plan fully fitted luxury kitchen and huge double bedrooms, one family bathroom. Benefits include a large storage room, Double glazing, Security entry system, Allocated parking, and lift access to floor.

High Point Village has been created to meet the needs of 21st Century living, an urban village by the Grand Union Canal - Hayes. The development sets standards for style and quality in urban living with advanced ergonomics and generous space maximising green and open space. It features four interconnected landscaped gardens with raised lawns, a water feature and places to relax, a public square for events, retail and out-door dining, play area for children and canal side walkway.

- Two Bedroom
- 4th Floor
- Leasehold
- Ground Rent - £0
- Communal Garden
- One Bathroom
- Lift Access
- Service Charge - £5436 per year
- Balcony
- Sheltered Parking



This floor plan is for illustrative purposes only. It is not drawn to scale. Any measurements, floor areas (including any total floor area), openings and orientation are approximate. No details are guaranteed, they cannot be relied upon for any purpose and they do not form part of any agreement. No liability is taken for any error, omission or misstatement. A party must rely upon its own inspection(s). Powered by www.focalagent.com