

Cardinal Building, Station Approach, Hayes, UB3 4FD

Guide Price £325,000

🛏 2 🚿 2 🛋 1



TWO BED APARTMENT - 3RD FLOOR - OPEN PLAN KITCHEN / LIVING ROOM - BALCONY - 24HR CONCIERGE - GYM / SWIMMING POOL - LEASEHOLD - CHAIN FREE

Henry Wiltshire are pleased to present this well maintained two bed modern apartment located on the third floor which comprises of a fully kitchen which includes dishwasher, built in fridge/freezer, wooden flooring throughout common areas of the property, carpeted double bedroom with fitted closet, private balcony overlooking the canal.

The development sets standards for style and quality in urban living with advanced ergonomics and generous space maximizing green and open space. It features four interconnected landscaped gardens with raised lawns, a water feature and places to relax, a public square for events, retail and out-door dining, play area for children and canal side walkway. With fine points including a 24hr concierge and gymnasium with swimming pool and dance studio. The apartments itself have the best of contemporary finishes and versatile layouts.

Location

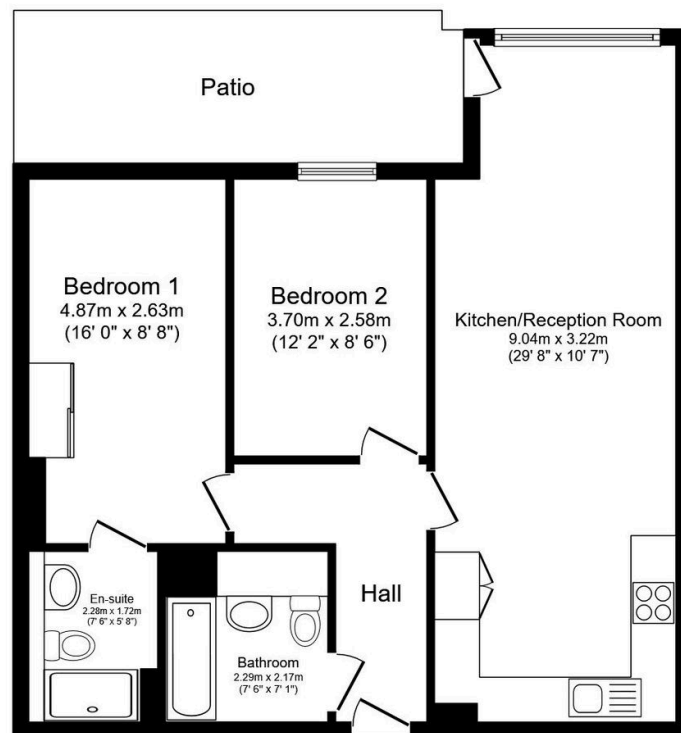
UK Offices | Canary Wharf - E14 | Nine Elms - SE1 | Royal Docks - E16 | Bow - E3 | Hayes, Middlesex - UB3 | Manchester - M2

International Offices | Dublin | Abu Dhabi | Hong Kong | Singapore



High Point Village is situated within the fast-emerging business hub of Hayes. Seamless transport links mean it is equally well-connected to Heathrow Airport, some of the most prosperous business areas, the M4 corridor and Central London. Heathrow Airport can be reached in just 6 minutes via the Heathrow Connect service. London Paddington is only 20 minutes away by rail, where the Crossrail will also operate through Hayes and Harlington station, expected 2022 meaning a direct journey to the West End will take approximately 20 minutes. The High Point Village development is located directly adjacent to Hayes and Harlington Station.

- Two Bedroom
- Two Bathroom
- Ensuite
- Fitted Kitchen
- Balcony
- 24hr Concierge
- Leasehold
- Service Charge
- Ground Rent
- Chain Free



This floor plan is for illustrative purposes only. It is not drawn to scale. Any measurements, floor areas (including any total floor area), openings and orientation are approximate. No details are guaranteed, they cannot be relied upon for any purpose and they do not form part of any agreement. No liability is taken for any error, omission or misstatement. A party must rely upon its own inspection(s). Powered by www.focalagent.com