

Forastero House Nestle Avenue, Farine Avenue, Hayes, UB3

Guide Price £400,000

 1  1  1



TOP FLOOR - ONE BEDROOM - ONE BATHROOM - LIFT ACCESS - ONSITE GYM - BALCONY - COMMUNAL GARDEN - CHAIN FREE

Henry Wiltshire is proud to offer this beautifully modern one-bedroom, one-bathroom apartment situated on the top floor of the sought-after Forastero House. The property provides a contemporary living experience with a well-designed open-plan layout, perfect for modern living.

Open-Plan Living: The property boasts a fully fitted kitchen with integrated appliances, which seamlessly flows into the reception area, creating an ideal space for both entertaining and relaxation. The open-plan layout enhances the overall feeling of space and light.

Spacious Bedroom: The double bedroom offers plenty of room for comfortable living, with ample space for storage solutions and a peaceful environment for rest. Large windows allow natural light to fill the room, making it a bright and inviting retreat.

Modern Bathroom: The bathroom is finished to a high standard with modern fixtures and fittings, providing a sleek and comfortable space to unwind. As a top-floor apartment, this property

UK Offices | Canary Wharf - E14 | Nine Elms - SE1 | Royal Docks - E16 | Bow - E3 | Hayes, Middlesex - UB3 | Manchester - M2

International Offices | Dublin | Abu Dhabi | Hong Kong | Singapore



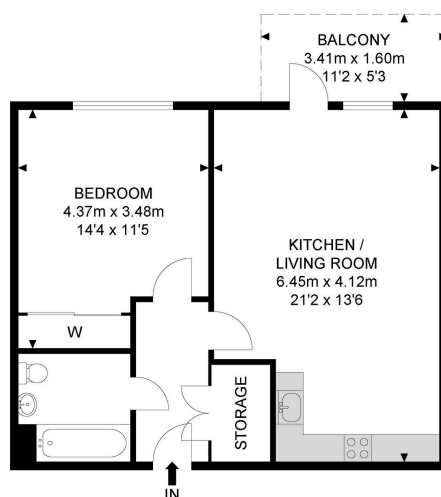
enjoys an abundance of natural light throughout the day, creating a warm and welcoming atmosphere. This property offers generous storage space, ideal for keeping your living area clutter-free.

Building Features: Forastero House is equipped with lift access for ease of movement throughout the building, and residents will also enjoy the added benefit of a secure communal garden. The Nestle Apartments, part of the development, also offer access to a well-equipped, residents-only gym—perfect for those looking to maintain an active lifestyle.

Location: Ideally located with convenient transport links and nearby amenities, this property offers an excellent lifestyle for professionals, couples, or anyone looking for a modern living space in a desirable area.

- One Bedroom
- Open-Plan Living
- Modern Bathroom
- Lift Access
- Service Charge
- One Bathroom
- Spacious Bedroom
- Top Floor
- Leasehold
- Ground Rent

Forastero House



10th Floor



APPROX. GROSS INTERNAL FLOOR AREA 534.96 SQ FT / 49.70 SQM
APPROX. GROSS EXTERNAL FLOOR AREA 59.20 SQ FT / 5.50 SQM

Whilst every attempt has been made to ensure the accuracy of the floor plan contained here, measurements of doors, windows, rooms and any other items are approximated and no responsibility is taken for any error, omission or mis-statement. This plan is for illustrative purposes only and should be used as such by any prospective purchaser. The service, system and appliances shown have not been tested and no guarantee as to their operability or efficiency can be given.

© SpacePhoto

Photography and Floor Plan