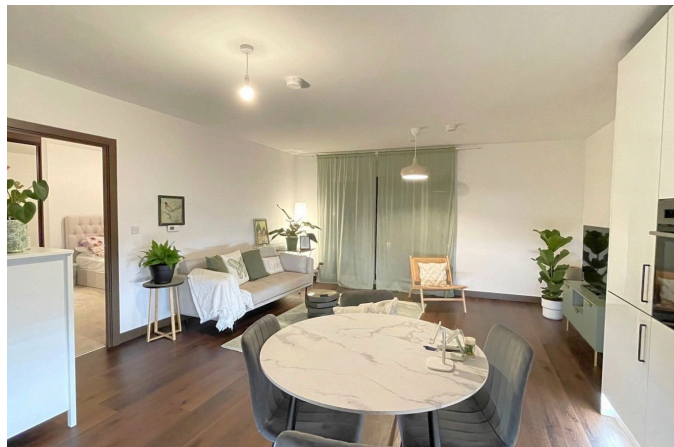


7 Gramophone Lane, Hayes, UB3

£365,000

1 bed 1 bath 1 car



ONE BEDROOM - ONE BATHROOM - BALCONY - LIFT ACCESS - LEASEHOLD

Set within reach of the peaceful Grand Union Canal Walk, Henry Wiltshire are pleased to present this 1 bedroom apartment boasts an open-plan layout complemented by stylish interiors. Its contemporary design further benefits from a private terrace with ample room for outdoor seating.

Powerhouse Lane is situated in a lovely location with easy access to amenities, choice schools, and the vast Lake Farm Country Park. The Thames and the Grand Union Canal Walk are within reach, as are numerous bus stops and Hayes & Harlington station. All apartments also come with an audio/visual entry system and Hyperoptic Broadband.

With its convenient location under a mile from Hayes Town Centre filled with vibrant cafés, bars and restaurants, The Venue is in a prime location for people looking to be part of an exciting community at one of London's most iconic musical landmarks. As part of the refurbishment of the Old Vinyl Factory, a three-screen cinema and live music venue will accompany the eight-acre site, with regular interactive exhibitions to celebrate the history of the complex. You can reach

Hayes and Harlington train station in just a 10-minute walk, which offers services to London Paddington in just 20 minutes. London Heathrow is also only a 10-minute drive away.

- One Bedroom
- Open Plan
- Lift Access
- Service Charge
- Paddington in just 20 minutes
- One Bathroom
- Balcony
- Lease Remaining
- Ground Rent
- London Heathrow is also only a 10-minute drive away

GRAMAPHONE LANE

APPROXIMATE GROSS INTERNAL FLOOR AREA: 538 SQ FT - 50.01 SQ M

