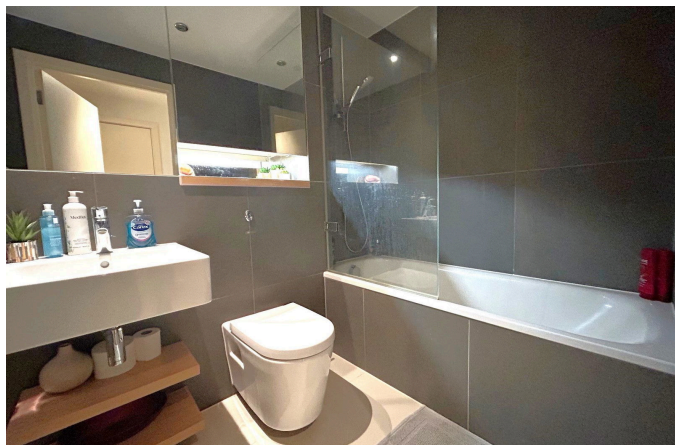
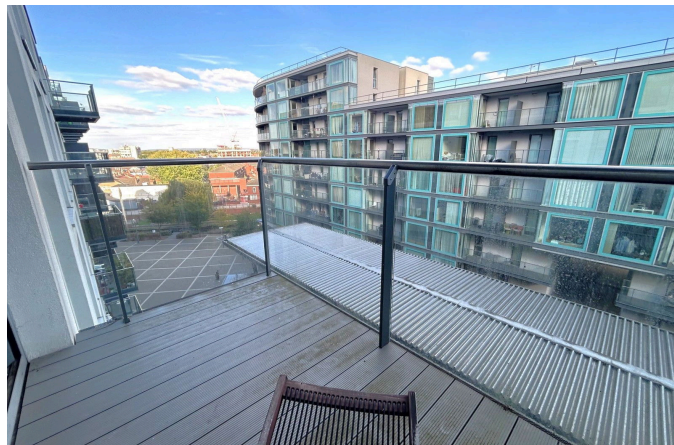
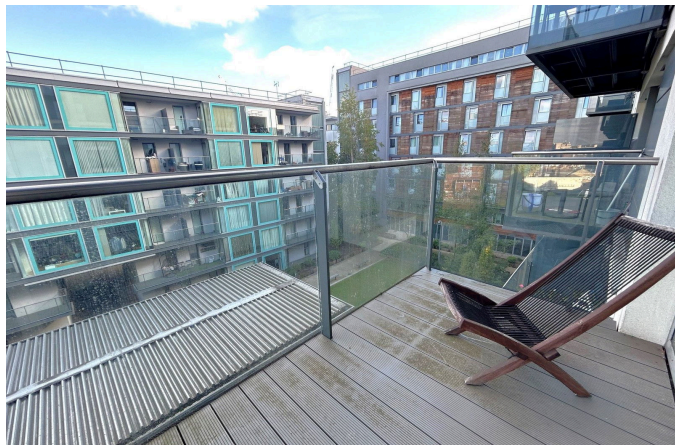


## Vantage Building, Station Approach, Hayes, UB3 4FA

Guide Price £250,000

1 bed 1 bath 1 car



**ONE BEDROOM - ONE BATHROOM - 5TH FLOOR - 24HR CONCIERGE - GYM / SWIMMING POOL - LEASEHOLD- ALLOCATED PARKING - CHAIN FREE**

Henry Wiltshire are pleased to present this one bed purpose built apartment located within Vantage Building on the 5th floor which comprises of a open plan living room and fitted kitchen with built in fridge freezer, cooker, oven, and dishwasher. the property also offers a private balcony, double bedroom, and family bathroom. As a optional extra, residents will have access to gym facilities including Pool, Jacuzzi, Sauna, and Steamroom. 24hrs concierge for added security and convenience.

- One Bedroom
- Fitted Kitchen
- 24hr Concierge
- Chain Free
- Service Charge TBC
- One Bathroom
- Balcony facing the Communal Garden
- Lift Access
- Lease - 983 years
- Ground Rent TBC

466 sq.ft. (43.3 sq.m.) approx.

