

Flat 207, Cardinal Building, Station Approach, Hayes, UB3

£330,000

🛏️ 2 🍴 2 🛋️ 1

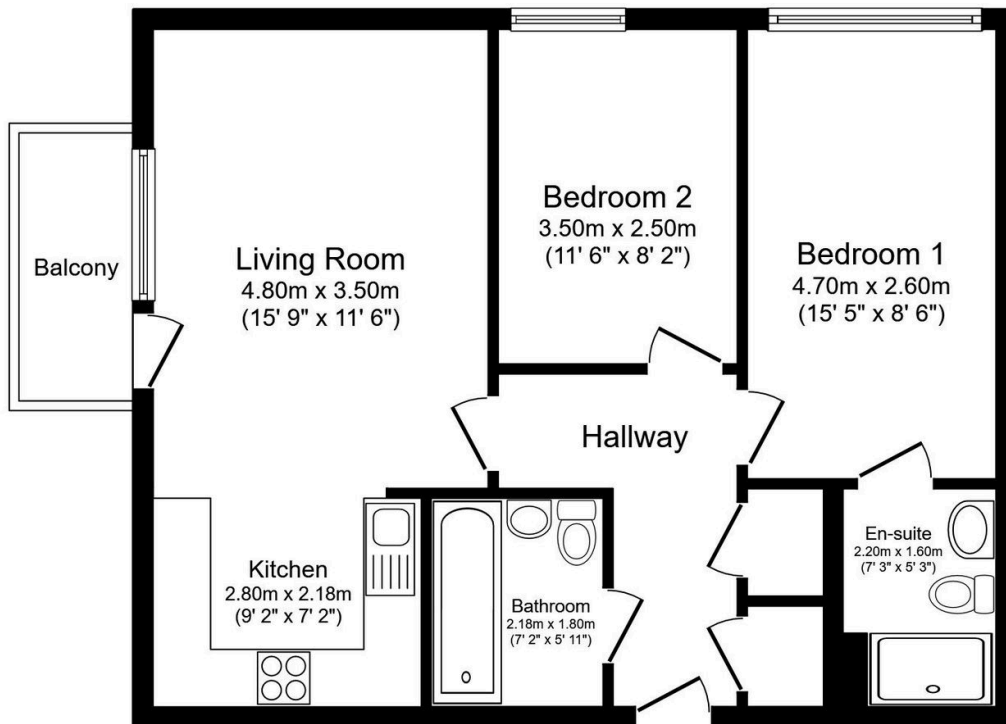


ONE BED APARTMENT - 2ND FLOOR - OPEN PLAN KITCHEN / LIVING ROOM - BALCONY - 24HR CONCIERGE - GYM / SWIMMING POOL - LEASEHOLD - CHAIN FREE

Henry Wiltshire are pleased to present this well maintained one bed modern apartment located on the second floor which comprises of a fully kitchen which includes dishwasher, built in fridge/freezer, wooden flooring throughout common areas of the property, carpeted double bedroom with fitted closet, private balcony overlooking the canal.

The development sets standards for style and quality in urban living with advanced ergonomics and generous space maximizing green and open space. It features four interconnected landscaped gardens with raised lawns, a water feature and places to relax, a public square for events, retail and out-door dining, play area for children and canal side walkway. With fine points including a 24hr concierge and gymnasium with swimming pool and dance studio. The apartments itself have the best of contemporary finishes and versatile layouts.

- ONE BED APARTMENT
- 2ND FLOOR
- OPEN PLAN KITCHEN / LIVING ROOM
- BALCONY
- 24HR CONCIERGE
- GYM / SWIMMING POOL
- LEASE REMAINING 983 YEARS
- CHAIN FREE
- SERVICE CHARGE - TBC
- GROUND RENT - TBC



This floor plan is for illustrative purposes only. It is not drawn to scale. Any measurements, floor areas (including any total floor area), openings and orientation are approximate. No details are guaranteed, they cannot be relied upon for any purpose and they do not form part of any agreement. No liability is taken for any error, omission or misstatement. A party must rely upon its own inspection(s). Powered by www.focalagent.com