

Nine Elms Avenue, Uxbridge, UB8 3TJ

Offers Over £495,000

3 2 1



MID TERRACE - 3 BEDROOM - 2 BATHROOM - OFF STREET PARKING - REAR EXTENSION - PRIVATE GARDEN

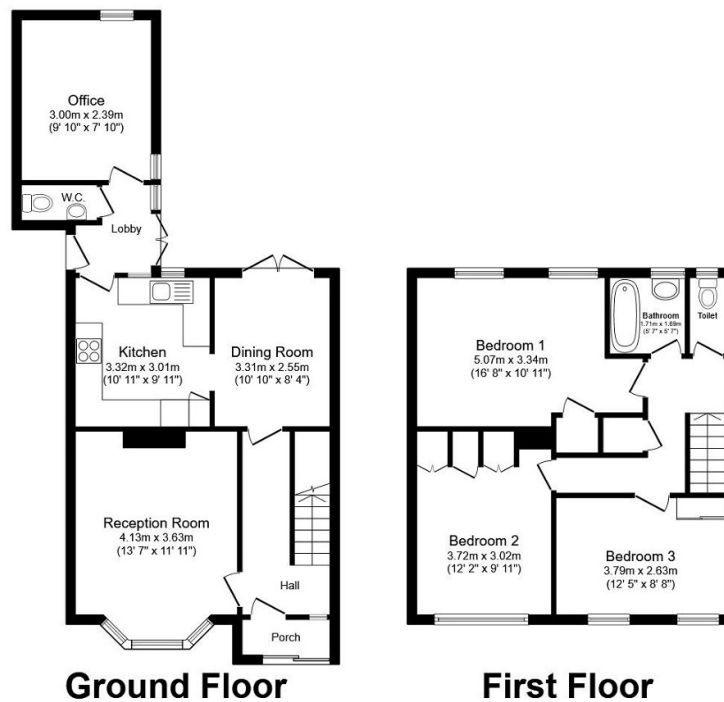
Henry Wiltshire are pleased to present this charming 3-bedroom terrace property, which features 3 Bedrooms, 2 Bathrooms, Off-Street parking for up to 3 cars, extended at the rear, which leads out to the private garden.

Location Highlights:

- Just 1 mile from Hillingdon Hospital
- Only 0.6 miles to Brunel University

Ideal for investors and families alike. Don't miss this opportunity to secure a conveniently located and well-appointed home

- Mid Terrace
- Two Bathroom
- Rear Extension
- W/C
- Freehold
- Three Bedroom
- Off Street Parking
- Office
- Private Rear Garden



Total floor area 113.4 m² (1,221 sq.ft.) approx

This floor plan is for illustrative purposes only. It is not drawn to scale. Any measurements, floor areas (including any total floor area), openings and orientation are approximate. No details are guaranteed, they cannot be relied upon for any purpose and they do not form part of any agreement. No liability is taken for any error, omission or misstatement. A party must rely upon its own inspection(s).
Powered by www.focalagent.com