

258 Station Road, Hayes, UB3

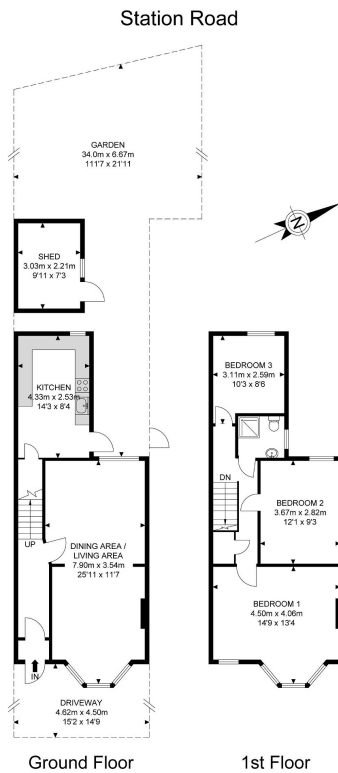
Guide Price £585,000

3 1 1



Henry Wiltshire are pleased to introduce this fantastic development opportunity! Nestled just 0.2 miles from Asda Superstore and a mere 0.5 miles from Hayes and Harlington station, this semi-detached home offers convenience and comfort. With 3 bedrooms, a bathroom, reception, and through lounge, along with a generous 110ft private garden and off-street parking, it's ideal for both investors and families. Plus, there's potential for rear and loft extensions (STPP)

- 1 Mile to Hayes & Harlington
- Development Opportunity
- Potential Rear Extension STPP
- Freehold
- Off Street Parking
- Investment
- Potential Loft Extension STPP
- Chain Free
- 110ft Private Rear Garden
- Three Bedrooms



APPROX. GROSS INTERNAL FLOOR AREA 954.75 SQ FT / 88.70 SQM
APPROX. GROSS EXTERNAL FLOOR AREA 2304.55 SQ FT / 214.10 SQM

Whilst every attempt has been made to ensure the accuracy of the floor plan contained here, measurements of floor, window, column and any other items are approximate and the responsibility is taken for any mis-statement of the dimensions. It is not to be regarded as a guarantee and should be used as such by any prospective purchaser. The service, system and appliances shown have not been tested and no guarantee as to their operability or efficiency can be given.

© SpacePhoto
Photography and Floor Plan