

Trout Road, Yiewsley, West Drayton, UB7 7FW

Offers Over £335,000

2 2 1



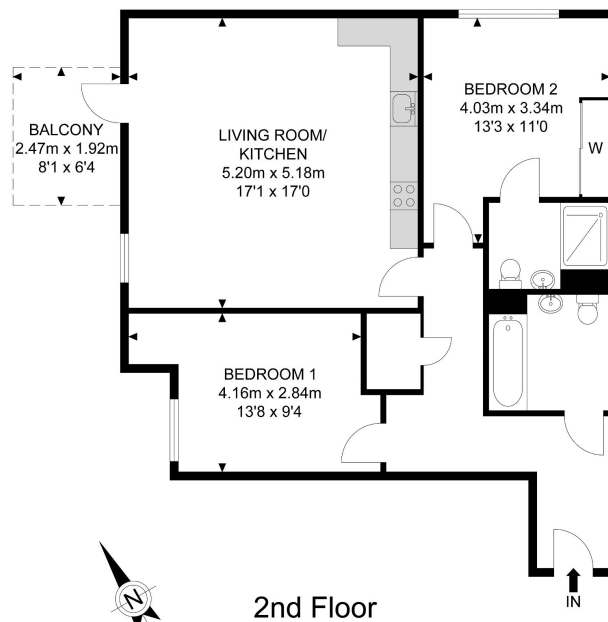
TWO BEDROOM - TWO BATHROOM - PARKING -LEASEHOLD - CHAIN FREE

Henry Wiltshire are pleased to present this well maintained two bedroom two bathroom purpose built apartment which comprises of a open plan living room kitchen area with laminated flooring throughout, double bedrooms with the master room including a en suite, family bathroom, balcony facing the canal, and parking. This property is located just 0.5 miles to West Drayton train station featuring the Elizabeth Line, 0.1 mile Tesco Superstore. Ideal for investors, working couple, and growing families alike.

Contact a member of staff now for more details.

- Two Bedroom
- En suite
- Parking
- Chain Free
-
- Two Bathroom
- Balcony
- Leasehold
-
-

Kiln Lodge



2nd Floor



APPROX. GROSS INTERNAL FLOOR AREA 761.0 SQ FT / 70.70 SQM
APPROX. GROSS EXTERNAL FLOOR AREA 50.59 SQ FT / 4.70 SQM

Whilst every attempt has been made to ensure the accuracy of the floor plan contained here, measurements of doors, windows, rooms and any other items are approximated and no responsibility is taken for any error, omission or misstatement. This plan is for illustrative purposes only and should be used as such by any prospective purchaser; the service, system and appliances shown have not been tested and no guarantee as to their operability or efficiency can be given.

© SpacePhoto
Photography and Floor Plan