

DOMUS NOVA



Can Ramon, North East Ibiza

€7.900.000



An island home at one with the landscape, this striking cliff-top villa for sale enjoys unrivalled vistas of the Mediterranean Sea.

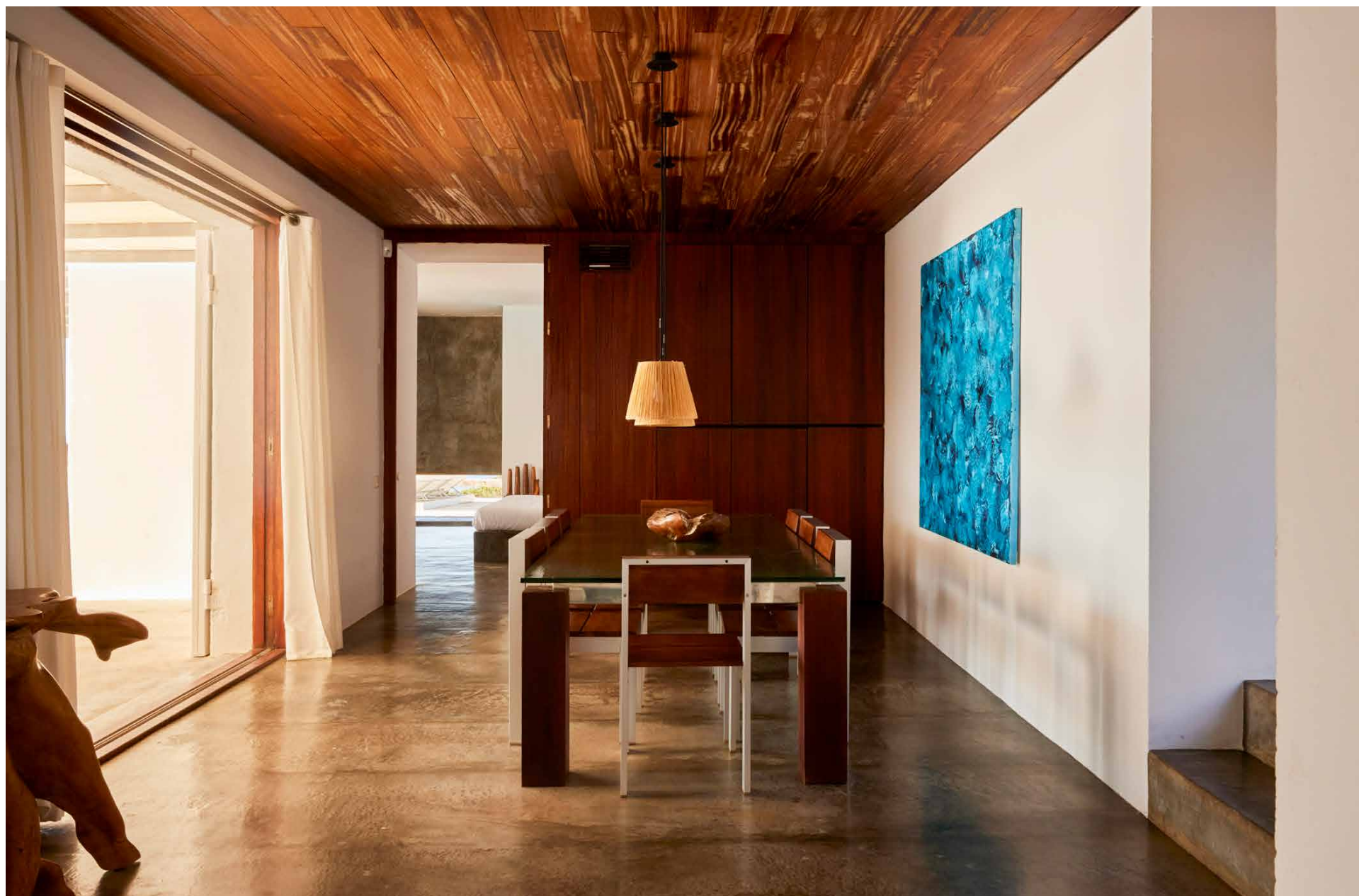
Nestled atop the rugged cliffs of Na Xamena, an extraordinary villa stands as a testament to architectural ingenuity. Designed by renowned architect Ramón Esteve, this modern masterpiece seamlessly emerges from the landscape of Ibiza's northwest coast.

Balancing structure and scenery, there's an organic air to Can Romano's minimalist framework. Clean lines, geometric forms, and expansive floor-to-ceiling glazing draw blurred boundaries between inside and out. A villa that takes alfresco living to new heights, the pièce de résistance here is the exterior space. An idyllic extension of the interior, a sprawling terrace is unrivalled in its setting and surroundings. Soak up panoramic sea views from secluded corners or dive into the infinity pool to feel at one with the ocean beyond.











“ An idyllic extension of the interior, a sprawling terrace is unrivalled in its setting and surroundings.



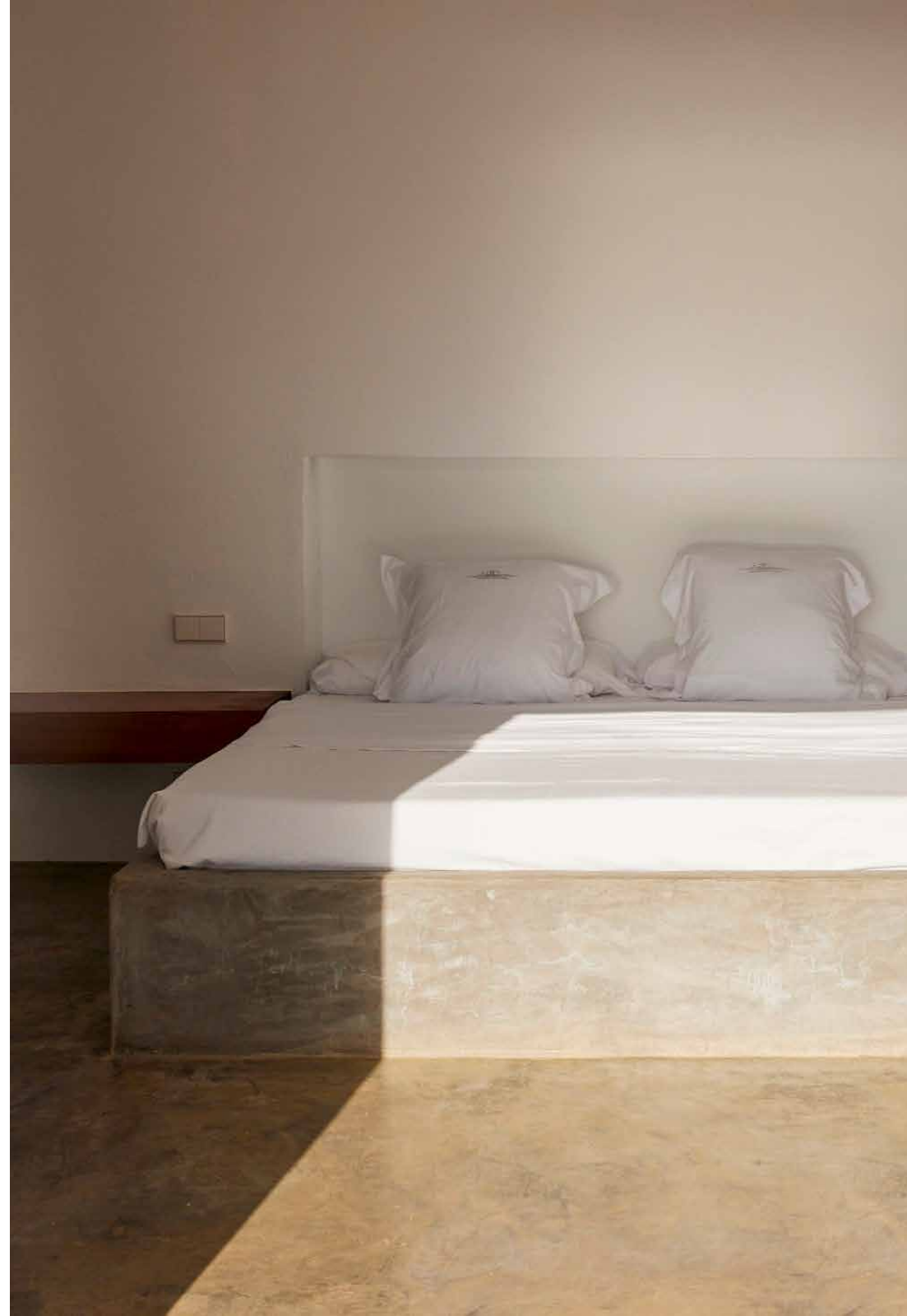






Inside, an inspiring space is brought to life with unparalleled precision. An elevated take on the landscape, textures draw inspiration from the rugged surrounds. Think concrete-finish flooring, dark wooden details and whitewashed walls. Entertain in the sky-lit reception room or indulge in dinner parties backdropped by windows framing vistas that rival artwork. Step out from here to a sun-kissed dining terrace, a quiet spot for alfresco interludes under the Balearic rays.

Elsewhere, seven bedrooms suites come adorned in neutral tones and considered materials. Design is pared-back to the essentials, prioritising captivating views of the outdoors.











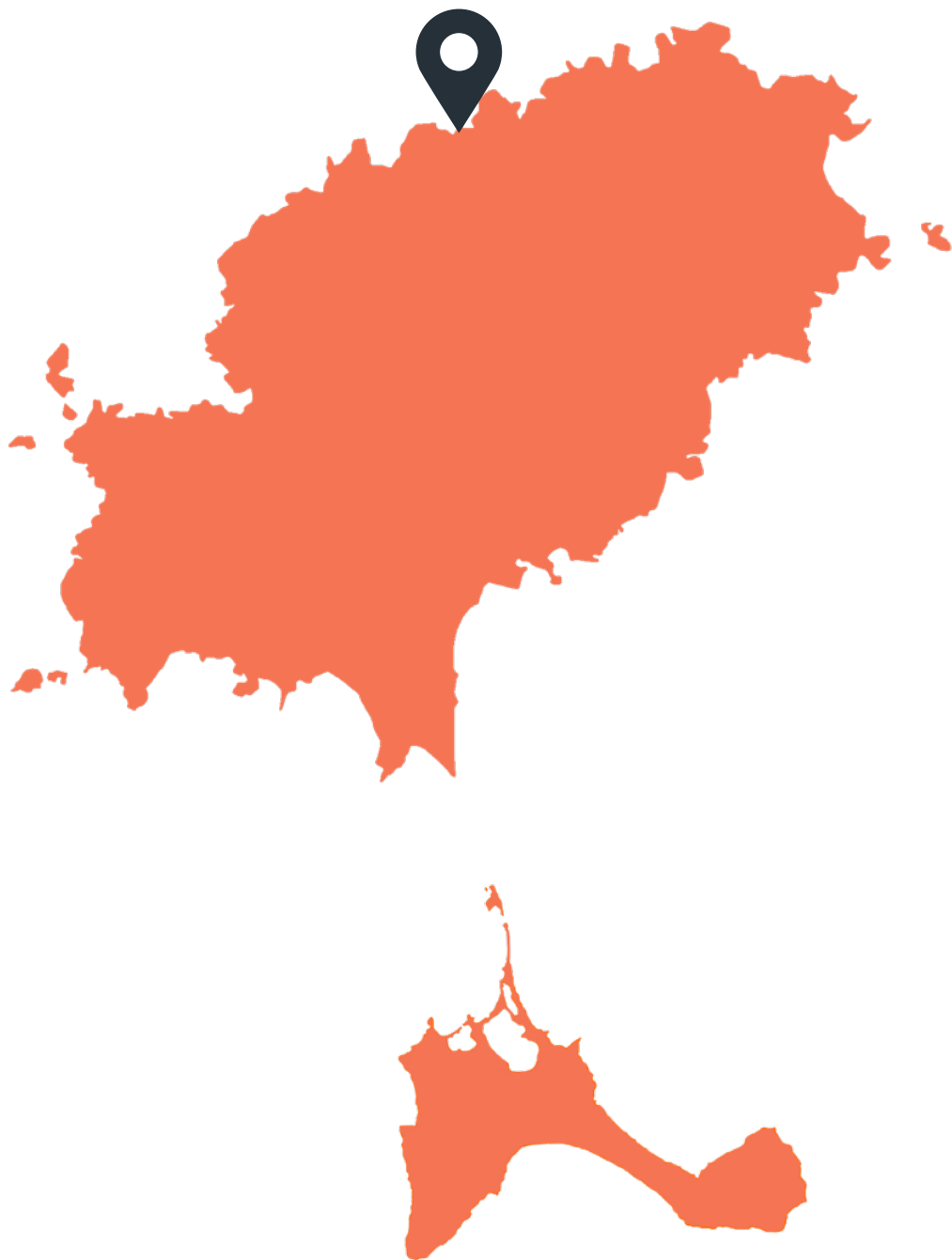




Property Details

Contemporary kitchen
Open-plan dining and reception room
Seven bedroom suites
Staff bedroom
Multiple terraces
Infinity pool
Cinema room
Study
Covered parking for 5 cars
Solar panels

8 bedrooms, 8 bathrooms
Build size: 730 sq m
Plot size: 2000 sq m



Location

Perched atop the cliffs of Na Xamena, this exclusive retreat offers privacy and seclusion – perfectly placed for exploring the unspoiled north of the island. Yet just moments away, the vibrant energy of Ibiza's renowned nightlife, and pristine beaches await. Head to Benirrás beach for its famed sunset drums, or the renowned cultural heart of Ibiza, Santa Gertrudis, is a 15-minute drive inland.

Specialising in Ibiza and
London's design-led homes

Let's talk
+34 871 515 302
ibiza@domusnova.com
domusnova.com/ibiza

The property particulars are a guide not statements. Descriptions, photographs, and plans are for guidance and should be checked a prospective purchaser or tenant. The Property is offered "subject to contract". No warranties, representations, or Tenancy is given by Domus Nova. Expenses incurred by a prospective tenant or buyer will not be reimbursed if the Landlord or the Seller withdraws prior to the Tenancy Agreement being signed, dated and exchanged and cleared funds received. Further details of the Disclaimer together with trading names and our Privacy Policy is shown on our website The IVA position relating to the property may change without notice.

View our privacy policy on how your data is processed and used. To find out how we process Personal Data, please refer to our Privacy Statement and other notices at [Privacy Statement](#).

© Domus Nova 2024. All rights reserved.