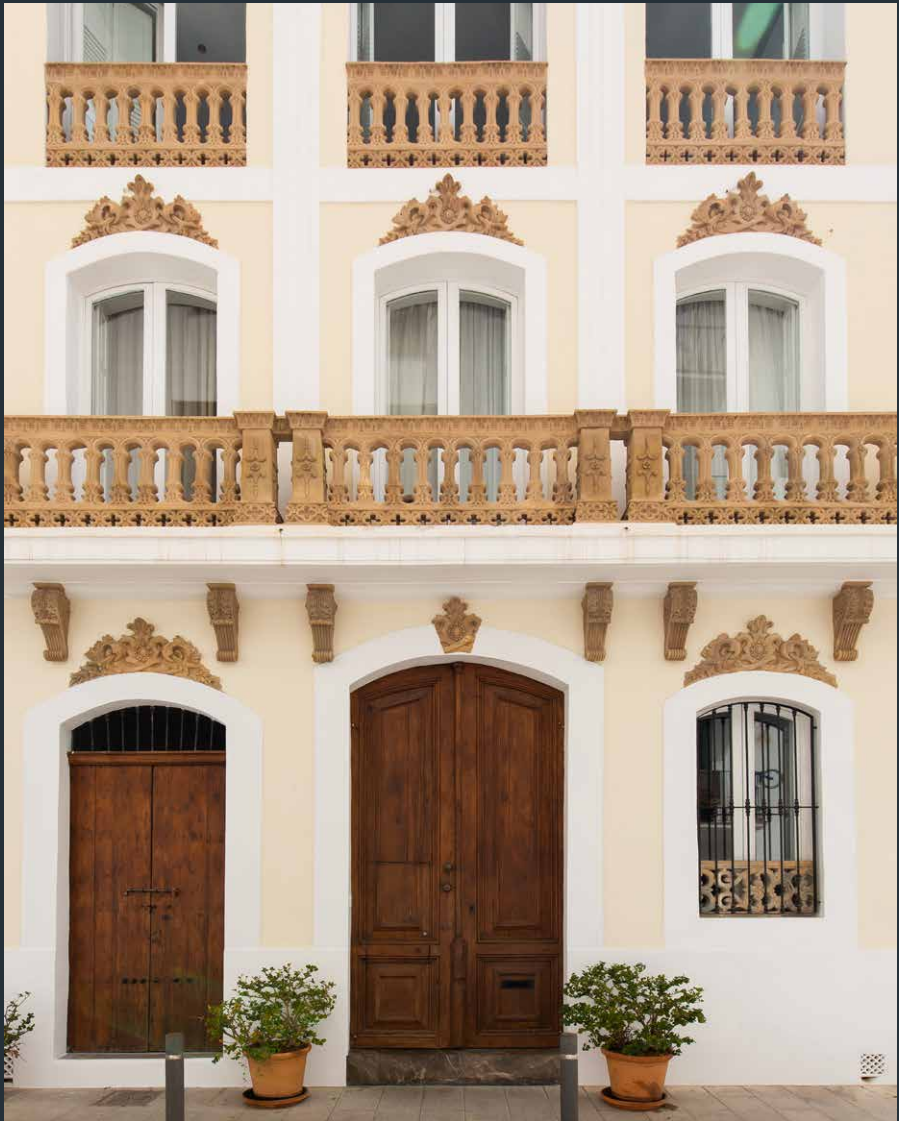


DOMUS NOVA



Palacio Orfeo

— Ibiza Old Town —



Standing tall at the base of Dalt Vila, this regal residence is a haven of hush in the hubbub of the neighbourhood.

Calm descends the moment you shut the imposing wooden doors behind you at Palacio Orféo. Designed for a government minister at the end of the 19th century, the address is one of only three homes conceived by Joan Gómez Ripoll – the mastermind behind the famed Gran Hotel Montesol.

The building's traditional structure has since been catapulted into the present day in collaboration with architect Pascal Cheikh Djavadi. The original soft yellow façade together with the beams and ornate stone balustrade in the striking entrance hall give way to contemporary finishes, sharp angles and a series of streamlined living spaces, spread out over four floors.

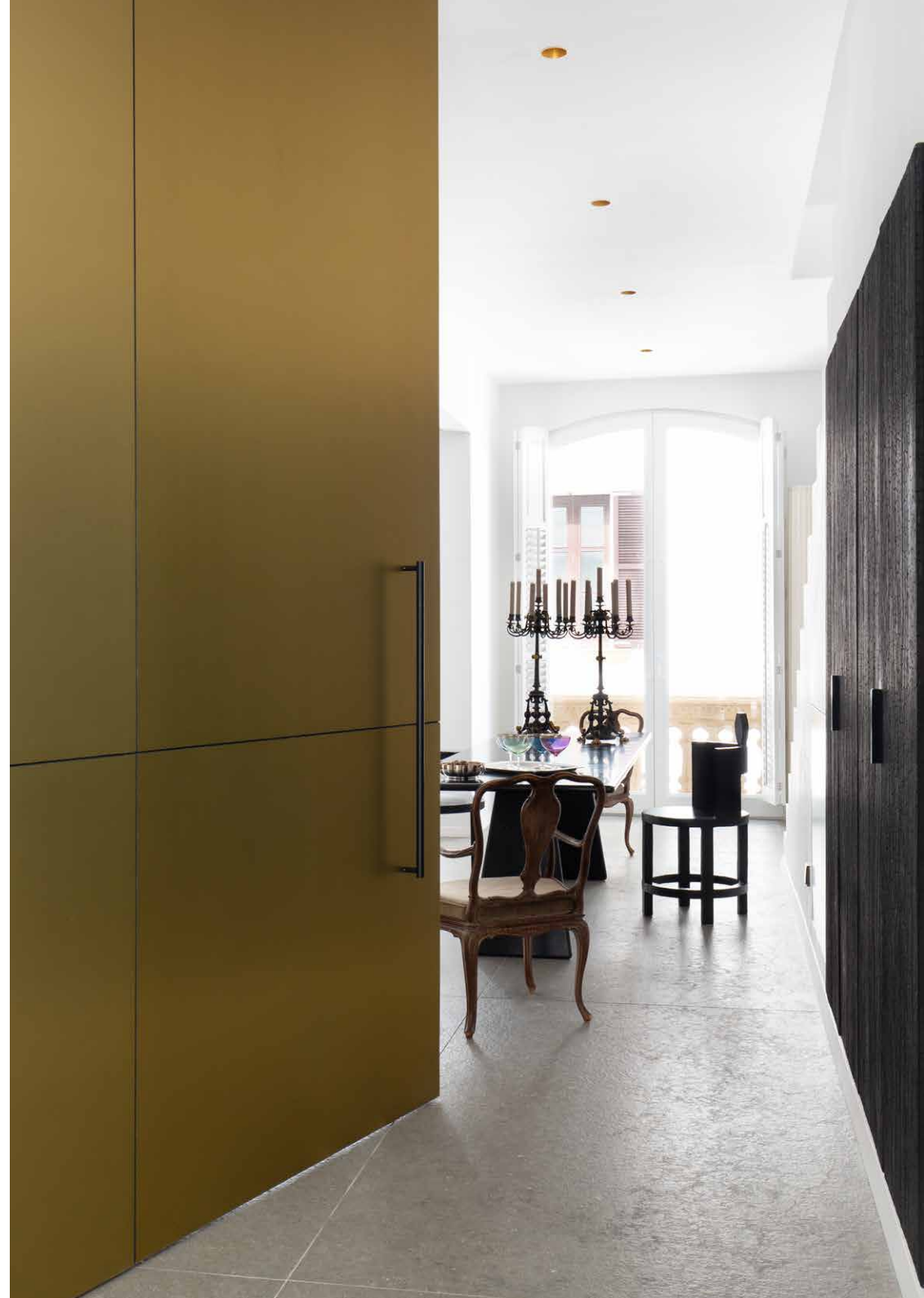




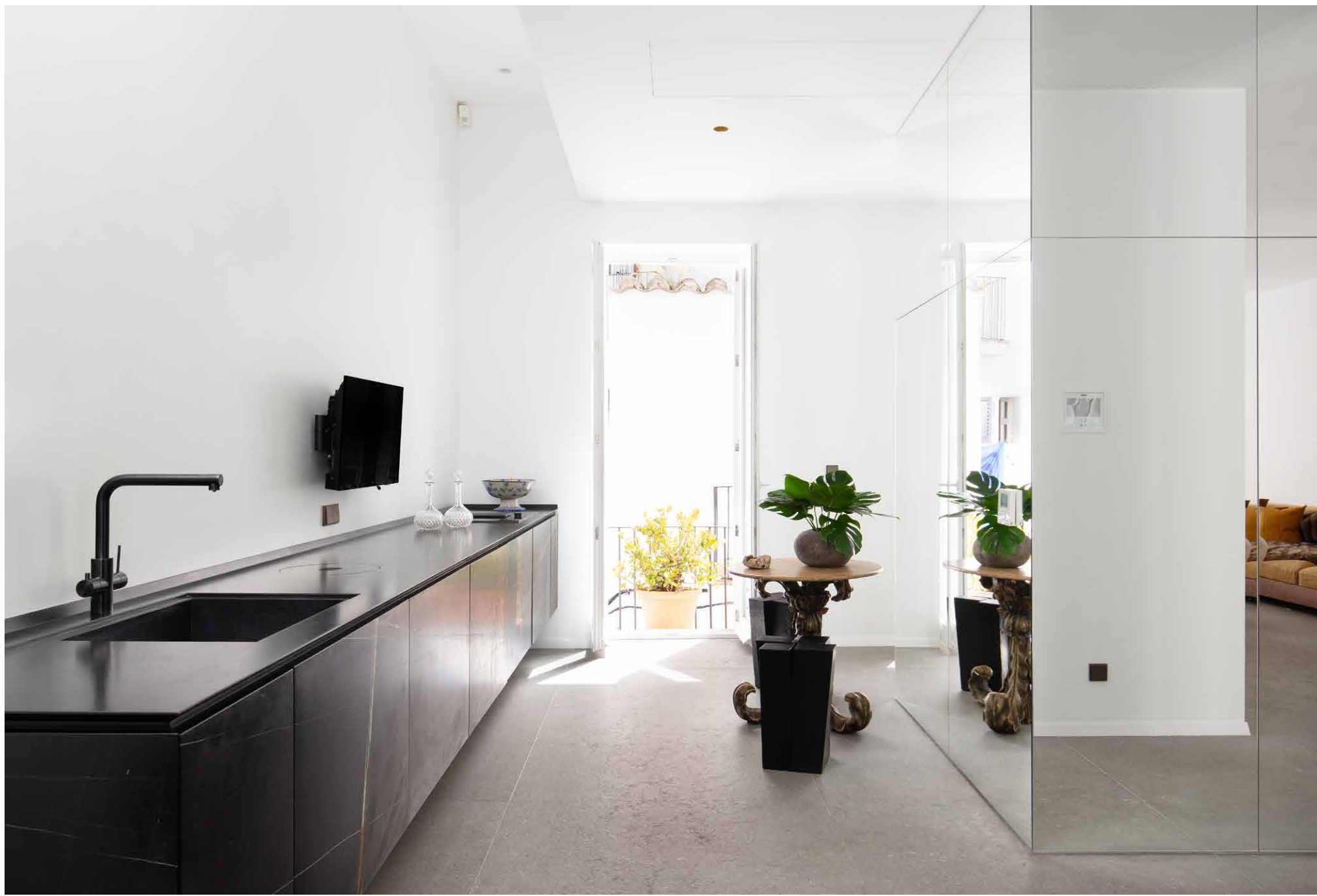
Avid bibliophiles will have ample room to house book collections in the first-floor library, which sits just off the master suite – all crisp white walls and warm wooden floors. Its en-suite bathroom is an Emperador marble masterpiece, clad from floor to ceiling in a hypnotic taupe coloured stone.

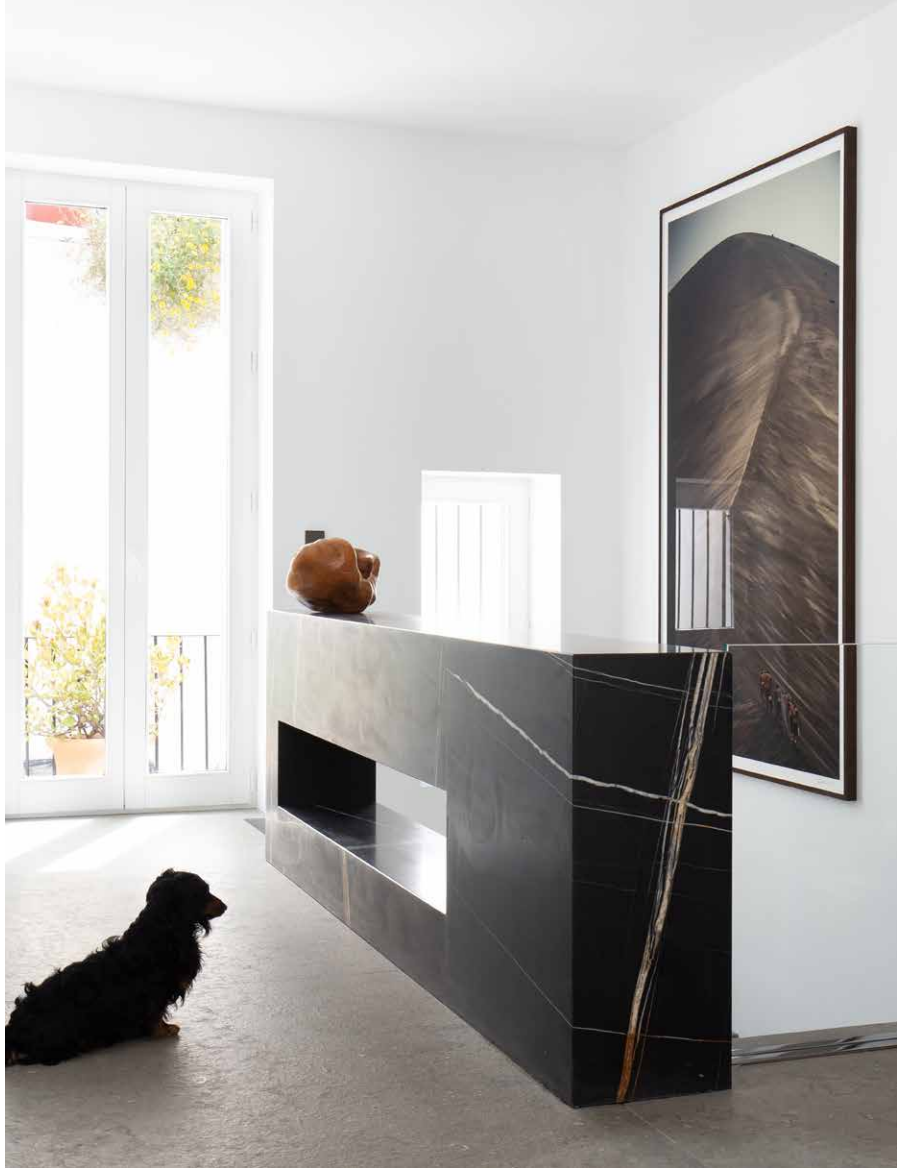
Bypass the stairs and take the lift up to the next floor where you'll encounter the dining room, complete with a towering golden door that peels back to reveal a minimalist kitchen. Here, light dances off mirrored walls onto glossy work surfaces and Japanese wood cabinets.

At the top of the house, another light-filled bedroom leads onto a suntrap terrace with wide-reaching vistas out over the rooftops of neighbouring dwellings.









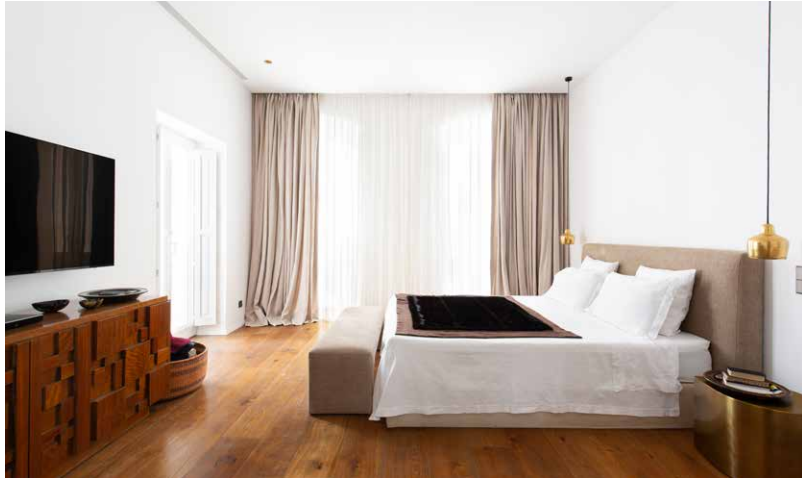














Location

Spanning 2,500 years of history, there's a reason this enclave has been awarded UNESCO World Heritage status. Winding up from the Portal de Ses Taules gateway to the cathedral-adorned summit, the cobbled streets bear the marks of the neighbourhood's Phoenician founders. For a taste of its more recent cultural legacies, there's the Museu d'art Contemporani d'Eivissa, the open-air Cinema Paradiso or Dalt Vila's many forward-thinking culinary institutions to explore – from the romantic La Torreta to Sabbaba, perched at the top of the aforementioned Gran Hotel Montesol.

Ibiza airport (10mins)

Las Salinas (15mins)

Highlighted Features

3 bedrooms

3 bathrooms

Large sun terrace

Open-plan living spaces

State-of-the-art kitchen

Built size: 462 sq m

Plot Size: 462 sq m

