

Pennance Field, Goldenbank

Guide Price £865,000

🛏 5 🍷 3 🚗 2

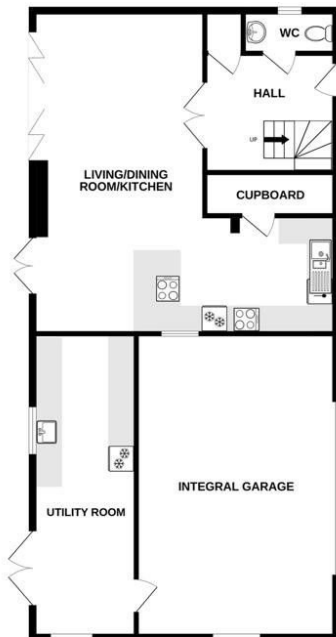


A simply superb, five bedroom, detached family home, vastly extended by the current owners to provide spacious and flexible accommodation throughout. Pennance Field is tucked away adjacent to Falmouth Golf Club between Swanpool and Maenporth. An early appointment to view is highly recommended.

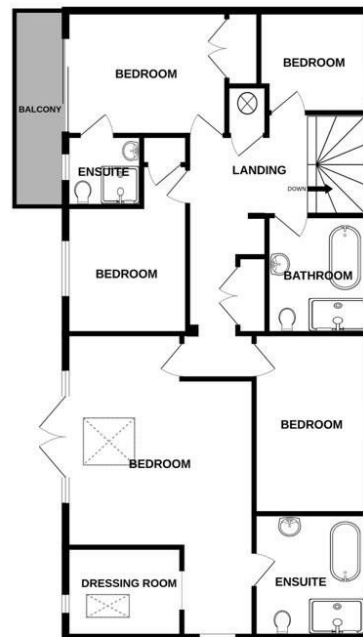
Key Features

- Superb, detached family home
- Five bedroom accommodation
- Second ensuite bedroom with balcony
- Contemporary open plan lounge/kitchen/diner
- Large double garage & parking for five vehicles
- Vastly extended by the current owners (planning to extend further)
- Master with ensuite bathroom, dressing area & balcony*
- Luxuriously appointed family bathroom
- Sun room/utility
- Wonderful, enclosed, sunny rear garden with open aspect

GROUND FLOOR
1121 sq.ft. (104.1 sq.m.) approx.



1ST FLOOR
1125 sq.ft. (104.5 sq.m.) approx.



TOTAL FLOOR AREA: 2246 sq.ft. (208.6 sq.m.) approx.

Whilst every attempt has been made to ensure the accuracy of the floorplan contained here, measurements of doors, windows, rooms and any other items are approximate and no responsibility is taken for any error, omission or mis-statement. This plan is for illustrative purposes only and should be used as such by any prospective purchaser. The services, systems and appliances shown have not been tested and no guarantee as to their operability or efficiency can be given.
Made with Metropix ©2024