



Churchills Mews, Woodford Green, IG8 9DP

£3,500 PCM

- Three Bedroom Detached House
- En Suite Bathroom With Master Bedroom
- Conservatory & Study
- Set Within A Quiet Cul De Sac
- Available Now
- Spacious Reception Room
- Garage

Churchills Mews, Woodford Green, IG8 9DP

We are pleased to offer to the rental market this four bedroom house which is situated within a quiet cul de sac in Woodford Green, Essex. The property has undergone a refurbishment which is available asap and has good access to local amenities, Woodford Central Line Station, Links to M11 & A406.

This spacious property is offered to you on a unfurnished basis which includes a kitchen/breakfast room, reception room, study, conservatory, down stairs w/c, master bedroom with en suite bathroom, three further double bedrooms, with fitted wardrobes, modern family bathroom and integral garage. Call our lettings team on 0203 9377733 to arrange a viewing.



4



2



2



D

Council Tax Band: G



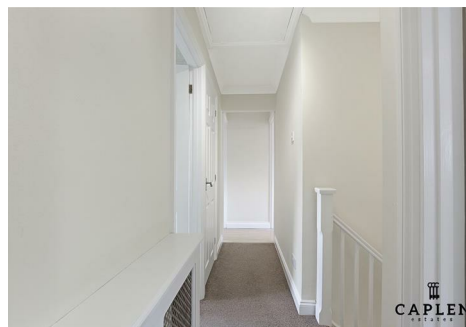
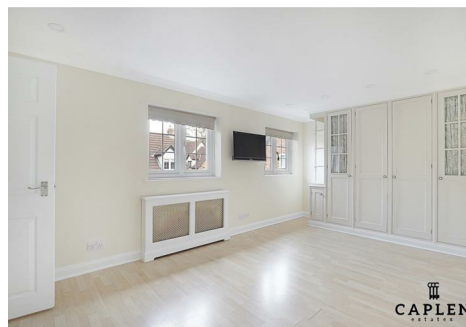
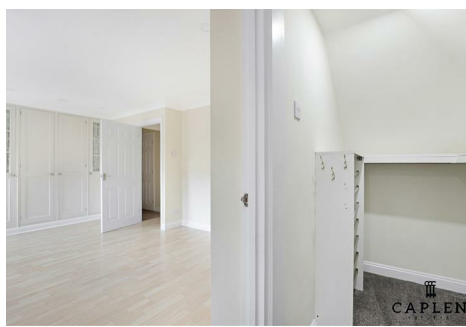
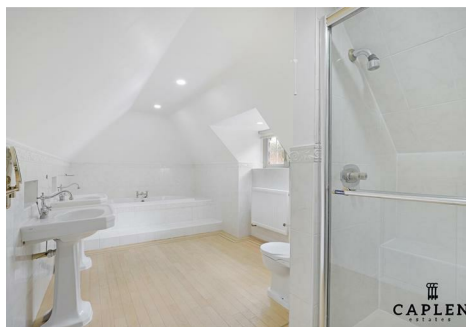
CAPLEN
ESTATES

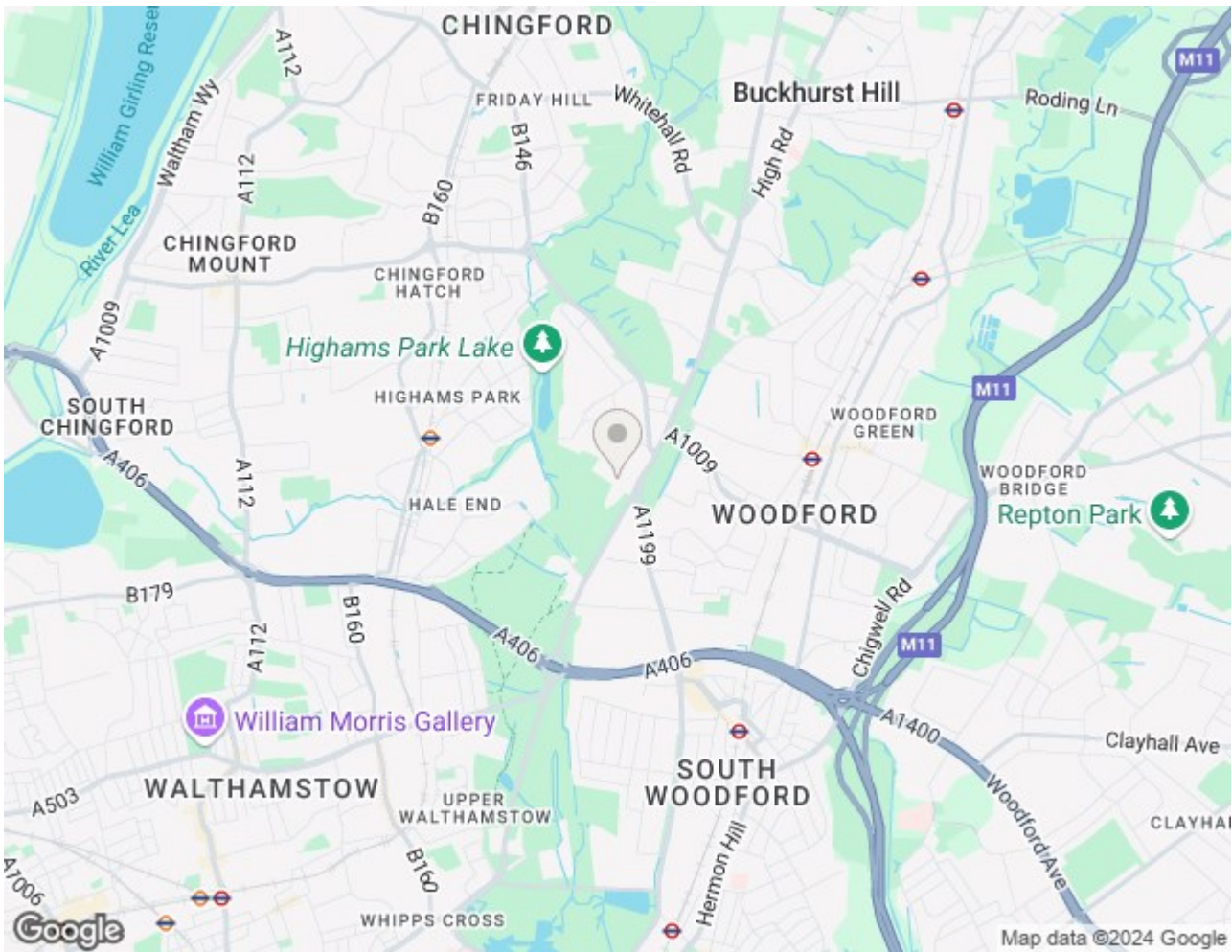


CAPLEN
ESTATES









Energy Efficiency Rating		
	Current	Potential
Very energy efficient - lower running costs		
(92 plus) A		
(81-91) B		79
(69-80) C	67	
(55-68) D		
(39-54) E		
(21-38) F		
(1-20) G		
Not energy efficient - higher running costs		
England & Wales	EU Directive 2002/91/EC	

EPC Rating:

D

Council Tax Band

G

Viewings

Viewings by appointment only. Call 0203 937 7733 to make an appointment.