



Chatsworth Mews, Stapleford Abbots, RM4 1FD

Asking Price £1,250,000

- **** NEW DEVELOPMENT - VILLAGE LOCATION ****
- Exceptional 2,670 sq ft of Living Space
- Large Open Plan Living with Bespoke Fitted Kitchen
- Close to Theydon Bois Station, M25 & M11 Motorways
- Stunning Five Bedroom Home
- Four Bathrooms One Cloakroom
- Wonderful Views over the Essex Countryside
- Separate Reception & Utility Room

Chatsworth Mews, Stapleford Abbots, RM4 1FD

Caplen Estates is delighted to introduce this delightful development, Chatsworth Mews, nestled in the beautiful village of Stapleford Abbots. A collection of luxury homes situated within a gated development, the properties are spacious and offer a high specification interiors and stunning views over the Essex countryside.

The development offers semi-detached homes, all with separate reception rooms, large open-plan kitchen/diner, family space to the rear with bi-folding doors onto the stunning rear garden. Each property has an exceptional floor area of 2670 sq ft, set over three floors, with five bedrooms, four bathrooms and one cloakroom, all of which are spacious and bright. The ground floors have underfloor heating, utility room and a separate WC.

The properties offer ample parking, with spaces for four to six cars and a good sized rear garden, which is perfect for relaxing or entertaining. Chatsworth Mews is set in a picturesque location with local schools, pubs and village shops nearby.

The development is only a 10 minute drive to Theydon Bois, or Epping, access into central London within 45 minutes, access to M25 & M11 within 10 minutes, and 20 minutes drive to the Elizabeth Line.

Please contact our sales team to arrange a viewing or reserve your new home.



5



4



2



B

Council Tax Band: New Build



Lounge

4.92 x 4.73 (16'1" x 15'6")

Utility

1.70 x 4.73 (5'6" x 15'6")

Kitchen

5.00 x 7.20 (16'4" x 23'7")

Dining

4.25 x 7.20 (13'11" x 23'7")

Hallway

WC

Bedroom One

4.85 x 4.73 (15'10" x 15'6")

Ensuite

2.25 x 2.45 (7'4" x 8'0")

Bedroom Two

3.90 x 6.30 (12'9" x 20'8")

Ensuite

2.24 x 2.10 (7'4" x 6'10")

Bedroom Three

3.45 x 5.33 (11'3" x 17'5")

Ensuite

2.90 x 2.32 (9'6" x 7'7")

Bedroom Four

4.40 x 4.10 (14'5" x 13'5")

Bedroom Five

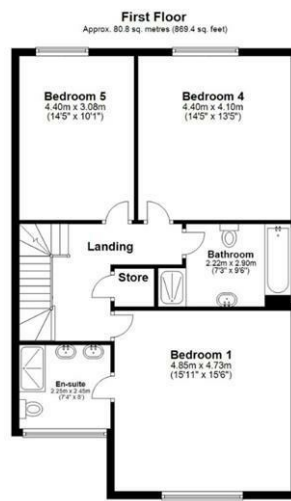
4.40 x 3.08 (14'5" x 10'1")

Main Bathroom

2.22 x 2.90 (7'3" x 9'6")

Garden

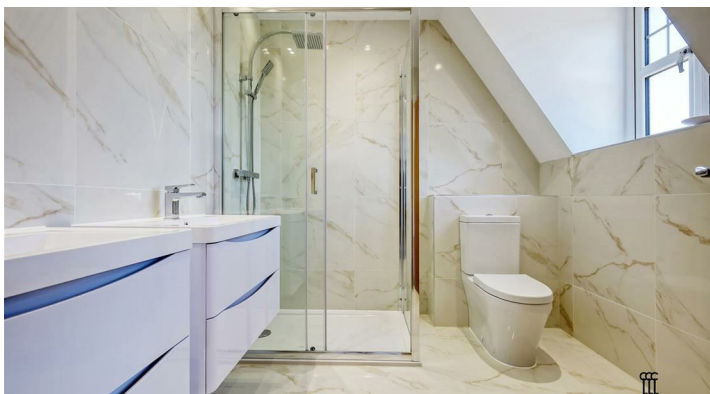
25.50 x 8.86 (83'7" x 29'0")

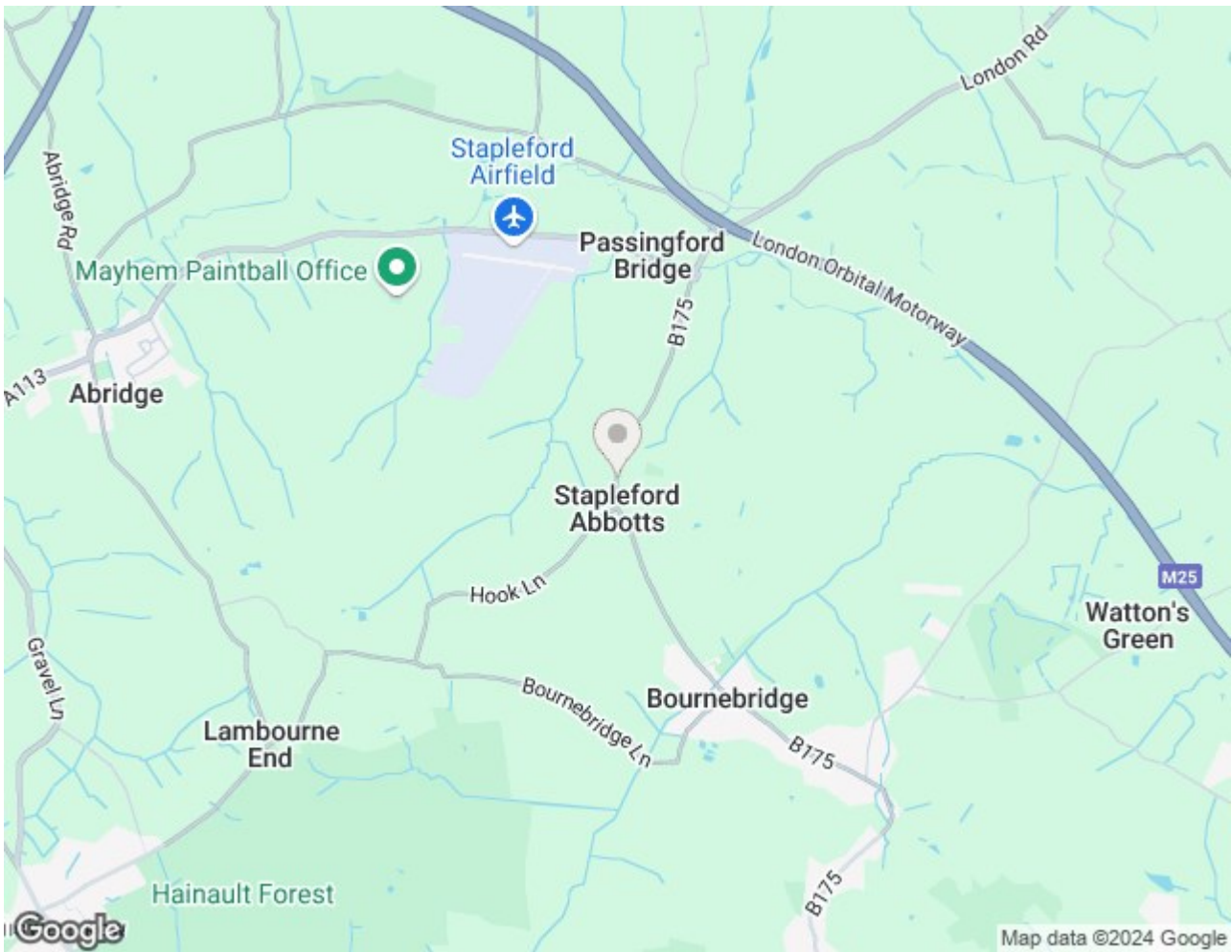


Total area: approx. 248.1 sq. metres (2670.5 sq. feet)

CAPLEN
estates







Energy Efficiency Rating		
	Current	Potential
Very energy efficient - lower running costs		
(92 plus) A		92
(81-91) B	87	
(69-80) C		
(55-68) D		
(39-54) E		
(21-38) F		
(1-20) G		
Not energy efficient - higher running costs		
England & Wales	EU Directive 2002/91/EC	

EPC Rating:

B

Council Tax Band

New Build

Viewings

Viewings by appointment only. Call 0203 937 7733 to make an appointment.