

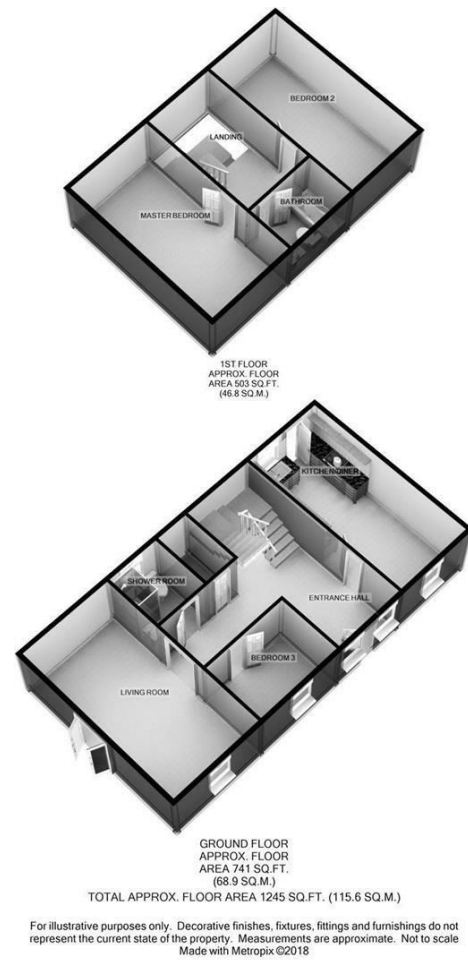
Directions

Viewings

Viewings by arrangement only. Call 0203 937 7733 to make an appointment.

EPC Rating

Energy Efficiency Rating		Current	Potential
Very energy efficient - lower running costs			
(92 plus) A			
(81-91) B			
(69-80) C			
(55-68) D			
(39-54) E			
(21-38) F			
(1-20) G			
Not energy efficient - higher running costs			
England & Wales		EU Directive 2002/91/EC	



Corn Barn Holyfield, Waltham Abbey, Nazeing, Essex, EN9 2ED

£2,250 PCM

- GUIDE PRICE £500,000 - £550,000
- Spacious Kitchen/Diner
- Large Garden Terrace
- Fantastic Views
- Three Double Bedrooms, Two Bathrooms
- Large Entrance Hall
- Parking For Two Cars
- 1wk Holding Deposit - £519.23 / 5wks Security Deposit - £2,596.15

Corn Barn Holyfield, Nazeing EN9 2ED

Caplen Estates proudly present to the market this three bedroom semi detached barn conversion situated on the borders of Waltham Abbey/Nazeing, Essex. The property is well positioned with fantastic views overlooking Lee Valley nature reserve and offers a bright and airy living space.

Entering the property you are welcomed by a spacious entrance hall with doors leading to a good sized kitchen/diner with integrated appliances and fantastic views. Further down the hallway you benefit from a ground floor double bedroom, spacious shower room with w/c, large living room with high ceiling and double doors leading to the outside garden terrace.

Upstairs you are welcomed by a bright large skylight, two further spacious double bedrooms with vaulted ceilings, various Velux windows and a shared three piece family bathroom suite. The property is powered via a ground source electric system and additionally has a large wrap around paved terrace and two parking spaces to the front. Call our lettings teams asap to arrange an internal viewing.

1wk Holding Deposit - £519.23 / 5wks Security Deposit - £2,596.15



Council Tax Band: E

Living Room

19'9" x 10'7"

Kitchen/Diner

19'9" x 9'1"

Entrance Hall

19'9" x 17'11"

Bedroom 3

9'10" x 7'2"

Shower Room

6'8" x 6'0"

Master bedroom

18'7" x 9'11"

Bedroom 2

18'7" x 9'2"

Bathroom

8'0" x 5'5"

