



## Needleman Close, Colindale NW9 5UF

**Guide price £1,550 per month** (Fees Apply)

Available 31/08/2018: Furnished or Unfurnished





## Guide Price: £1,550 per month

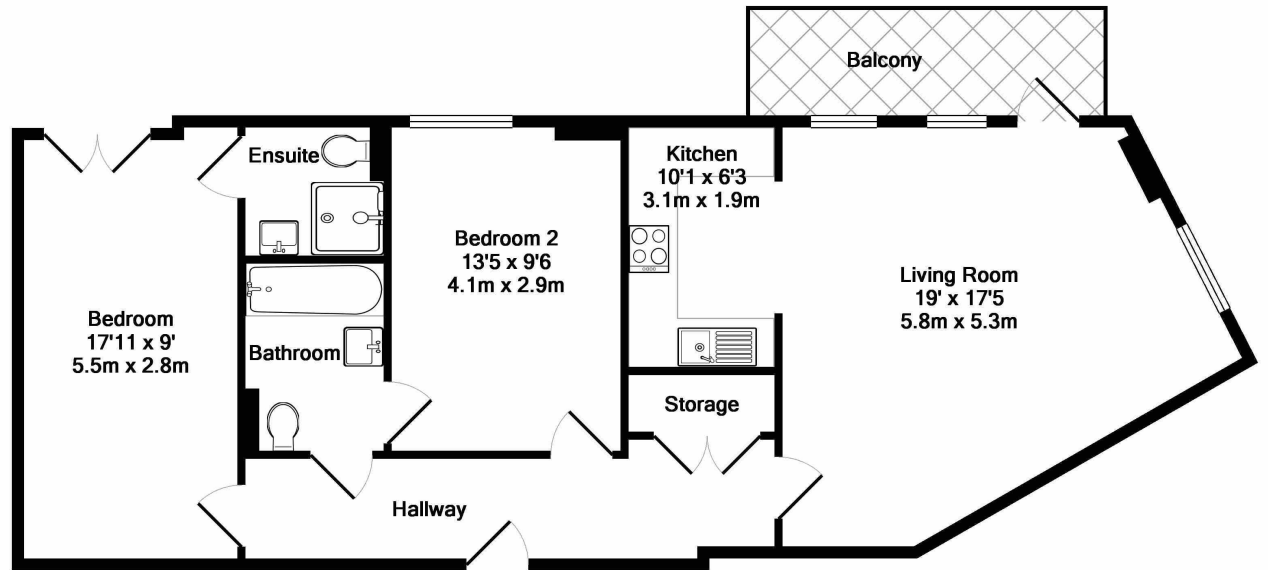
(Fees apply)

### Needleman Close Colindale NW9 5UF

- Modern Development
- Two Double Bedrooms
- Two Bathrooms
- First Floor Apartment
- Private Balcony
- Large Living Room
- Underground Parking Space
- Moments from Tube Station
- Communal Gardens
- Furnished or Unfurnished

Showcasing an ultra-contemporary design, this two bedroom apartment offers the ultimate in stylish living space in a popular modern development which provides the utmost in convenience and a welcoming community environment. Accommodation comprises of entrance hallway with built in storage and doors leading to a large living area providing access to a private balcony overlooking rear aspect and archway to a modern, semi-open plan kitchen complete with appliances. Both bedrooms are generous doubles and have access to en-suite bathrooms; the main bathroom features Jack and Jill doors and the second is an en-suite shower room. The property also benefits from access to a peaceful communal garden backing onto Montesole Playing fields and there is an allocated parking space included in the underground carpark. The property is part of the ever popular Pulse Development, situated moments from Colindale tube station and boasts access to onsite amenities including local shops and cafes. Further Details; Local Authority: Barnet Council Council Tax: £1,397.07 per year (Band D)





**TOTAL APPROX. FLOOR AREA 792 SQ.FT. (73.5 SQ.M.)**

Whilst every attempt has been made to ensure the accuracy of the floor plan contained here, measurements of doors, windows, rooms and any other items are approximate and no responsibility is taken for any error, omission, or mis-statement. This plan is for illustrative purposes only and should be used as such by any prospective purchaser. The services, systems and appliances shown have not been tested and no guarantee as to their operability or efficiency can be given

Made with Metropix ©2018



## Stanmore Lettings

31-33 Church Street  
Stanmore  
London  
HA7 4AR

**T: 0208 954 4000**

[gibbs-gillespie.co.uk](http://gibbs-gillespie.co.uk)



### Important Notice

We have prepared these property particulars as a general guide to a broad description of the property. They are not intended to constitute part of an offer or contract. We have not carried out a structural survey and the services, appliances and specific fittings have not been tested. All photographs, measurements, floorplans and distances referred to are given as a guide only and should not be relied upon for the purchase of carpets or any other fixtures and fittings. Lease details, service charges and ground rent (where applicable) and council tax are given as a guide only and should be checked and confirmed by your Solicitor prior to exchange of contracts. The copyright of all details, photographs and floorplans remain exclusive to Gibbs Gillespie.