

Buy. Sell. Rent. Let.



Willerby Clearwater, Southview Leisure, Skegness, PE25 2LA



3



2



1

£79,995

When it comes to
property it must be


lovelle



£79,995

 3  2  1

Key Features

- Well Appointed Caravan
- Lake Views
- Master Bedroom with Ensuite and Walk in Wardrobe
- Three Bedrooms
- Situated on a Popular Holiday Park
- With Decking Included
- EPC Exempt
- Tenure: Leasehold





Beautiful 2017 ABI Windermere 40' x 20' with decking included in the sale and pleasant lake view. Lovely lodge comprising; open plan lounge/kitchen/diner, hallway, master bedroom with en-suite and walk-in wardrobe, two further bedrooms and shower room. There is allocated car parking nearby and the amenities are close by.

Lounge/Kitchen/Diner

5.91m x 6.96m (19'5" x 22'10")

Entered via a UPVC side entrance door with patio doors to decking, five UPVC windows, two radiators, cloaks cupboards also housing central heating boiler, two sofas, electric fire, six seater, dining table, spotlights, kitchen area comprises, fitted with base and wall cupboards with work tops over, inset stainless steel sink, integrated double oven and hob, extractor over, integrated fridge, integrated freezer, integrated washing machine, integrated dishwasher, integrated micro wave, door to;

Inner Hall

With radiator, doors to;

Bedroom One

2.93m x 2.60m (9'7" x 8'6")

With UPVC window to the side aspect, radiator, double bed, door to;

Walk in Wardrobe

1.24m x 1.71m (4'1" x 5'7")

Fitted with hanging, shelving and drawers, door to;

Ensuite

1.66m x 1.71m (5'5" x 5'7")

With UPVC window to the side aspect, shower enclosure, low level WC, wash hand basin inset to vanity unit, radiator, extractor fan.

Bedroom Two

2.48m x 1.68m (8'1" x 5'6")

With UPVC window to the side aspect, twin beds, fitted wardrobe, radiator.

Bedroom Three

2.47m x 3.19m (8'1" x 10'6")

With UPVC window to the side aspect, twin beds, fitted wardrobes, dressing table, radiator.

Shower Room

With UPVC window to the side aspect, low level WC, wash hand basin inset to vanity unit shower cubicle, cupboard housing central heating boiler, extractor fan, ladder style radiator.

Outside

With decking overlooking a pleasant lake.

Services

The property has LPG gas central heating, mains electricity, mains water and sewerage. Lovelle Estate Agency and our partners provide a range of services to buyers, although you are free to use an alternative provider. Park open from 1st March to 5 January. Site fees range from £3995 to £8230. Please ask for a copy of the site rules for further detailed information. If you require a solicitor to handle your purchase and/or sale, we can refer you to one of the panel solicitors we use. We may receive a fee if you use their services. If you need help arranging finance, we can refer you to the Mortgage Advice Bureau who are in-house. We may receive a fee if you use their services.

Location

Popular site on the edge of town with a wide range of facilities for the whole family to include; heated swimming pool with slide, sauna and steam room , fully equipped gym, large multi-sport courts, high ropes, climbing wall, Bear Grylls survival skills, Arts and crafts den, Trampoline park boathouse bar and restaurant, show bar with daily shows, events and bingo, VR experience and gaming area, crazy golf course, fishing lakes and owner only events.

Directions

From our office on Roman Bank, proceed along to The Ship traffic lights. Turn left onto Burgh Road. Continue along, past the petrol station and Spar shop. Proceed straight on at the traffic licence at the Welcome Pub. The entrance to the park will be found on the right hand side. On entering the park you will find the sales suite on the righthand side before the barriers.

Local Authority

This property falls within the geographical area of East Lindsey District Council - 01507 601111.
<https://www.e-lindsey.gov.uk/>

Viewing

By appointment with the Sole Agent Lovelle Estate Agency, telephone 01754 769769. We recommend prior to making an appointment to view, prospective purchasers discuss any particular points likely to affect their interest in the property with one of our property consultants who have seen the property in order that you do not make a wasted journey.

How to make an offer

If you are interested in this property then it is important that you contact us at your earliest convenience. We will require certain pieces of personal information from you in order to provide a professional service to you and our client. The personal information you have provided to us may be shared with our client, the seller, but it will not be shared with any other third parties without your consent other than the stated reasons detailed within our privacy policy. More information on how we hold and process your data is available on our website <https://www.lovelle.co.uk/privacy-policy/> and you can opt-out at any time by simply contacting us. For any offer, you wish to make we will need to establish certain details before negotiation can take place. This is so that our vendor can make an informed choice when negotiating and accepting your offer. You will be asked to provide formal I.D. and address verification, as required under the new Money Laundering Legislation. You might also have one or two questions for us, such as which solicitor to choose, or which mortgage lender has the best offers available for me. We have a one-stop shop to satisfy all of these needs so please ask.

Mortgage Advice

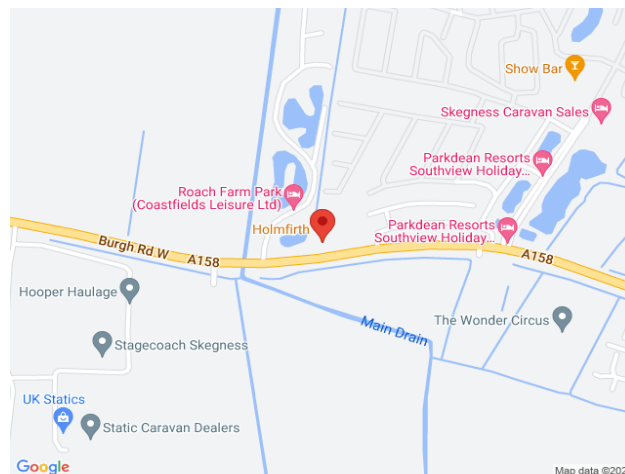
Budgeting correctly and choosing the right mortgage for a move is vital. For independent mortgage and insurance, advice call our mortgage advisor on 01754 769769 to arrange an appointment.

Energy Performance Certificate

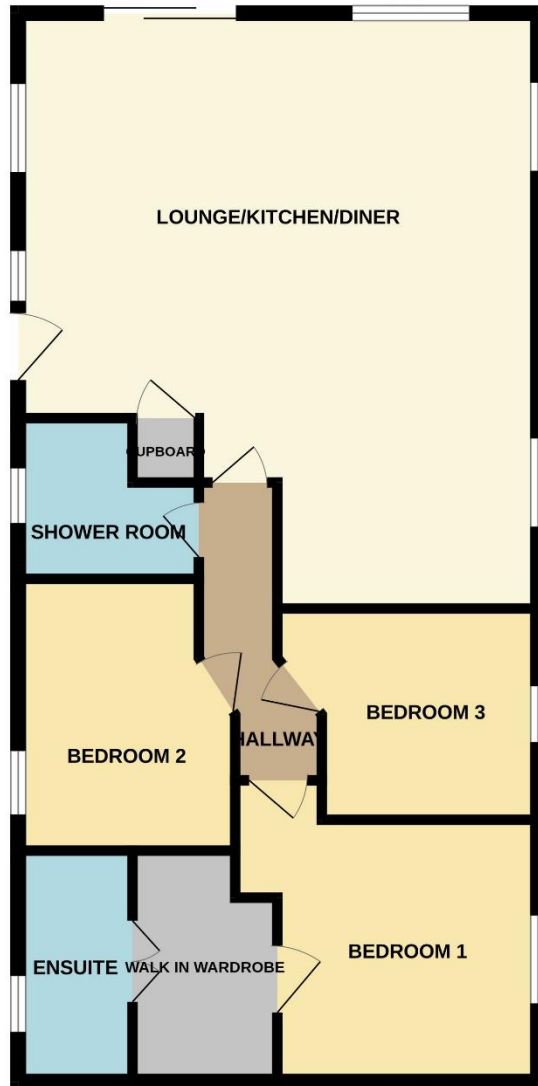
A copy of the full Energy Performance Certificate for this property is available upon request unless exempt. Advisory Notes - Please be advised if you are considering purchasing a property for Buy To Let purposes, from 1st April 2018 without an EPC rated E or above it will not be possible to issue a new tenancy, or renew an existing tenancy agreement.

Agents Notes

These particulars are for guidance only. Lovelle Estate Agency, their clients and any joint agents give notice that:- They have no authority to give or make representation/warranties regarding the property, or comment on the SERVICES, TENURE, and RIGHT OF WAY of any property. These particulars do not form part of any contract and must not be relied upon as statements or representations of fact. All measurements/areas are approximate. The particulars including photographs and plans are for guidance only and are not necessarily comprehensive.



GROUND FLOOR



Whilst every attempt has been made to ensure the accuracy of the floorplan contained here, measurements of doors, windows, rooms and any other items are approximate and no responsibility is taken for any error, omission or mis-statement. This plan is for illustrative purposes only and should be used as such by any prospective purchaser. The services, systems and appliances shown have not been tested and no guarantee as to their operability or efficiency can be given.
Made with Metropix ©2024

When it comes to **property**
it must be


lovelle

01754 769769

skegness@lovelle.co.uk

