

ROKSTONE



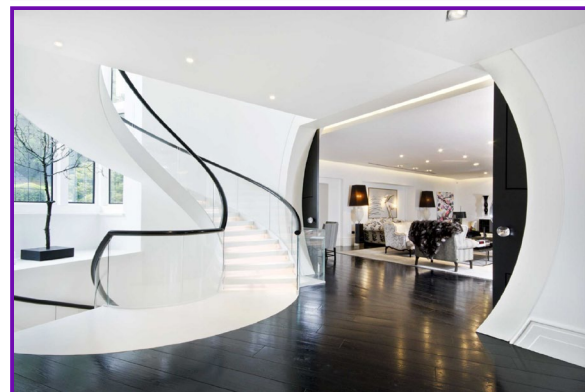
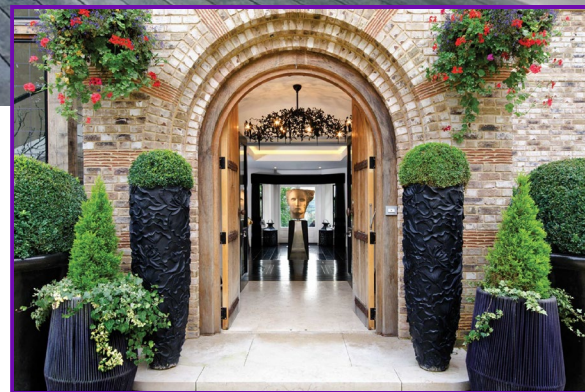
Totteridge Green Totteridge N20

This exceptionally tall and wide main mansion building boasts high ceilings, grand proportions, bespoke contemporary design as well as a variety of sophisticated lighting. This impressive space can accommodate over 100 people making it perfect for large receptions/events.

The property comprises of 11 generously sized bedrooms, 8 bathrooms, 2 exceptional reception rooms and a large kitchen. Additional features of this property include, a large, exquisite leisure space composed across the entire ground floor. Boasting a grand multi-level cinema room, an exceptionally large gym, a bar, a bathroom/changing area, a salon, two large game areas, and a steam room. Also located on the lower ground floor is a bespoke, T shaped, infinity pool of immense proportions which stretches out into the garden through a large sliding glass panel. This extraordinary space with its abundance of amenities is perfect for exercise, entertaining guest, or relaxation.

This home would be perfect for a family wanting to be tucked away from the hustle and bustle of Central London, boasting exquisite bespoke design, immense proportions, and an abundance of leisure facilities. This stately mansion is truly one of the most enviable properties in all north London, offering privacy and grand living along with perfect family entertaining space.

Price £19,995,000



5 Dorset Street London W1U 6QJ
Tel: 020 7580 2030 | Email: enquiries@rokstone.com
<https://www.rokstone.com>

ROKSTONE

Grovelands, Totteridge Common, London N20

Approximate Gross Internal Area:
House - 1548.1 sq.mts. / 16,664 sq.ft.
Garage/Flat - 131.8 sq.mts. / 1419 sq.ft.
Pool Annex - 33.9 sq.mts. / 365 sq.ft.
Out Building - 98.6 sq.mts. / 1061 sq.ft.
(not including void or reduced height area,
below 1.5m - denoted with dashed line)



Local Authority: Borough of Barnet
Tenure: Freehold