





Property Description

A Three Bedroom Semi-Detached Property Situated in a Secluded Cul-De-Sac in the Popular Area of Bushmead. This Ideal First Time Buy is Being Offered Chain Free as Benefits From a Lounge/Diner, Kitchen, En-Suite to Master Bedroom, Front and Rear Gardens and a Detached Garage. The Property is Situated Close to All Amenities, Schools and Transport Links.

Entrance Hall

Double glazed frosted door to front aspect. Stairs leading to first floor. Radiator.

Kitchen

8' 8" x 8' 5" (2.64m x 2.57m)
Double glazed window to front aspect. Fitted kitchen comprising a range of wall and base units with work surfaces over incorporating a stainless steel sink and drainer unit. Space for a fridge/freezer. Plumbing for a washing machine. Integrated gas hob and oven with fan over. Boiler. Part tiled.

Cloakroom

Double glazed frosted window to front aspect. Suite comprising low level wc and wash hand basin. Radiator.

Lounge

15' 9" x 15' 3" (4.80m x 4.65m)
Double glazed window and patio doors to rear aspect. Storage cupboard. Feature fire place. Two radiators.

First Floor Landing

Loft access with boarding, insulation and pull down ladder. Airing cupboard housing hot water tank.

Bedroom One

12' 2" x 9' 9" (3.71m x 2.97m)
Double glazed window to front aspect. Built in wardrobe. Radiator.

En Suite

Double glazed frosted window to front aspect. Suite comprising shower cubicle and wash hand basin. Part tiled. Radiator.

Bedroom Two

9' 3" x 8' 1" (2.82m x 2.46m)
Double glazed window to rear aspect. Radiator.

Bedroom Three

7' 9" x 5' 9" (2.36m x 1.75m)
Double glazed window to rear aspect. Radiator.

Bathroom

Double glazed frosted window to side aspect. Suite comprising bath with shower attachment, low level wc and wash hand basin. Part tiled. Heated towel rail.

Front Garden

Lawn with path to front door.

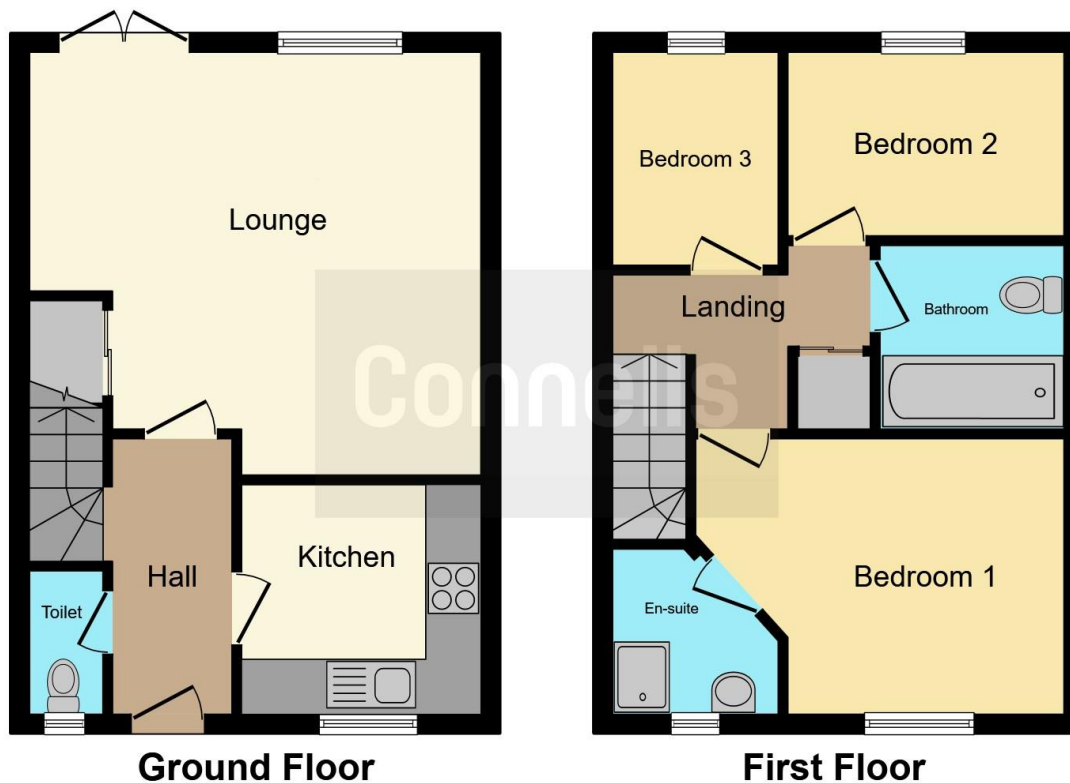
Rear Garden

Laid to lawn with shrubs and trees and a patio area. Gate to front.

Garage

Single garage with up and over door.





This floor plan is for illustrative purposes only. It is not drawn to scale. Any measurements, floor areas (including any total floor area), openings and orientation are approximate. No details are guaranteed, they cannot be relied upon for any purpose and they do not form part of any agreement. No liability is taken for any error, omission or misstatement. A party must rely upon its own inspection(s). Powered by www.focalagent.com

To view this property please contact Connells on

T 01582 592332
E lutonnorth@connells.co.uk

1A Riddy Lane
 LUTON LU3 2AD

EPC Rating: D

view this property online connells.co.uk/Property/LUN103099



Tenure: Freehold



1. MONEY LAUNDERING REGULATIONS Intending purchasers will be asked to produce identification documentation at a later stage and we would ask for your co-operation in order that there will be no delay in agreeing the sale. 2. These particulars do not constitute part or all of an offer or contract. 3. The measurements indicated are supplied for guidance only and as such must be considered incorrect. Potential buyers are advised to recheck measurements before committing to any expense. 4. We have not tested any apparatus, equipment, fixtures, fittings or services and it is in the buyers interest to check the working condition of any appliances.

Connells Residential is registered in England and Wales under company number 1489613, Registered Office is Cumbria House, 16-20 Hockliffe Street, Leighton Buzzard, Bedfordshire, LU7 1GN. VAT Registration Number is 500 2481 05.

See all our properties at www.connells.co.uk | www.rightmove.co.uk | www.zoopla.co.uk

Property Ref: LUN103099 - 0004