

for sale

£575,000



Charndon Close Luton LU3 4DU

Connells Luton North present a four bedroom detached property in the sought Barton Hills area of Luton. Charndon Close comprises an entrance hall, study, extended open plan lounge/diner, cloakroom, kitchen area, The upper floor contains four bedrooms and a family bathroom suite.

Charndon Close Luton LU3 4DU

Entrance Porch

Double glazed door to front aspect.

Entrance Hall

Under floor heating. Radiator.

Cloakroom

Suite comprising low level wc and wash hand basin. Extractor fan. Radiator.

Study

11' 4" x 8' 2" (3.45m x 2.49m)

Double glazed window to front aspect. Television point. Radiator.

Lounge/diner

31' 9" x 17' 8" (9.68m x 5.38m)

Double glazed window to front, side and rear aspects. Double glazed patio doors to side aspect. Television and telephone points. Electric feature fireplace. Air conditioning unit. Radiator.

Kitchen

13' 3" x 11' 4" (4.04m x 3.45m)

Double glazed window to rear aspect. Double glazed patio doors to side aspect. Fitted kitchen comprising a range of wall and base units with work surfaces over incorporating a sink and drainer unit. Plumbing for a washing machine and dishwasher. Space for a fridge/freezer. Rangemaster gas cooker. Cooker hood over. Under floor heating.

First Floor Landing

Double glazed window to rear aspect. Loft access with ladder.

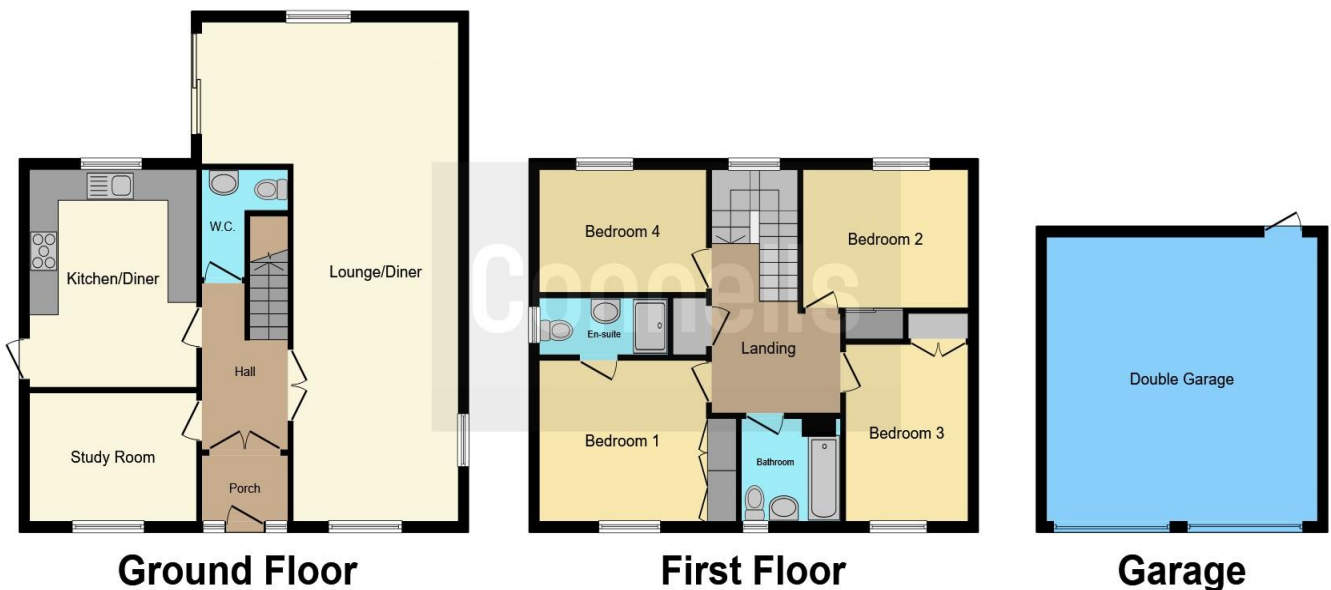
Bedroom One

13' 2" x 10' 3" (4.01m x 3.12m)

Double glazed window to front aspect. Fitted wardrobes. Air conditioning unit. Electric fan. Radiator.

En Suite

Double glazed window to side aspect. Suite comprising shower cubicle, wash hand basin and low level wc. Extractor fan. Radiator.



Bedroom Two

11' 2" x 8' 8" (3.40m x 2.64m)

Double glazed window to front aspect. Fitted wardrobes. Electric fan. Radiator.

Bedroom Three

11' 7" x 8' 7" (3.53m x 2.62m)

Double glazed window to rear aspect. Fitted wardrobes. Electric fan. Radiator.

Bedroom Four

11' 8" x 7' 10" (3.56m x 2.39m)

Double glazed window to rear aspect. Fitted wardrobes. Electric fan. Radiator.

Bathroom

Double glazed window to front aspect. Suite comprising bath with mixer taps, shower, wash hand basin and low level wc. Radiator.

Rear Garden

Laid to lawn with a patio area. Shed.

Double Garage

Double garage.





To view this property please contact Connells on

T 01582 592332
E lutonnorth@connells.co.uk

1A Riddy Lane
LUTON LU3 2AD

Property Ref: LUN102500 - 0003

Tenure: Freehold

EPC Rating: B

[view this property online connells.co.uk/Property/LUN102500](https://www.connells.co.uk/Property/LUN102500)

1. MONEY LAUNDERING REGULATIONS Intending purchasers will be asked to produce identification documentation at a later stage and we would ask for your co-operation in order that there will be no delay in agreeing the sale. 2. These particulars do not constitute part or all of an offer or contract. 3. The measurements indicated are supplied for guidance only and as such must be considered incorrect. Potential buyers are advised to recheck measurements before committing to any expense. 4. We have not tested any apparatus, equipment, fixtures, fittings or services and it is in the buyers interest to check the working condition of any appliances.

Connells Residential is registered in England and Wales under company number 1489613, Registered Office is Cumbria House, 16-20 Hockliffe Street, Leighton Buzzard, Bedfordshire, LU7 1GN. VAT Registration Number is 500 2481 05.

see all our properties at www.connells.co.uk | www.rightmove.co.uk | www.zoopla.co.uk