

for sale

£165,000 Leasehold



Kingsley Road Luton LU3 2LS

A One Bedroom Ground Floor Maisonette Situated in the Popular Limbury Area of Luton. This Chain Free Property Benefits From a Lounge, Kitchen, En-Suite, Bathroom and Off Road Parking and is Within Access to Local Transport Links and Amenities.



This floorplan is for illustrative purposes only and is not drawn to scale. Measurements, floor areas, openings and orientations are approximate. They should not be relied upon for any purpose and do not form any part of an agreement. No liability is taken for any error or mis-statement. All parties must rely on their own inspections.

Residential Sales & Lettings | Mortgage Services |
Conveyancing | Surveyors | Land & New Homes

Property Details

Lounge 15' 8" x 12' 3" (4.78m x 3.73m)

Double glazed door to front aspect. Double glazed window to front aspect. Storage cupboard. Radiator.

Kitchen 8' x 7' 3" (2.44m x 2.21m)

Fitted kitchen comprising a range of wall and base units with work surfaces over. Part tiled. Fridge/freezer. Plumbing for a washing machine. Electric hob with electric oven. Extractor fan. Radiator.

Bedroom One 15' x 10' (4.57m x 3.05m)

Double glazed window to rear aspect. Radiator.

Bathroom

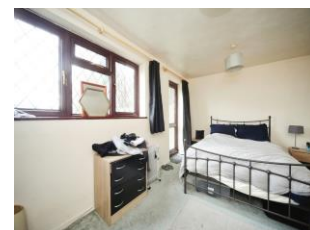
Suite comprising low level wc, wash hand basin. Radiator. Part tiled.

Garden

Communal garden area.

Parking

Off street parking x1.



To view this property please contact Connells on

T 01582 592332
E lutonorth@connells.co.uk

1A Riddy Lane
LUTON LU3 2AD

Tenure: Leasehold

EPC Rating: C

Property Ref: LUN102482 - 0002

This is a Leasehold property. We are awaiting further details about the Term of the lease. For further information please contact the branch. Please note additional fees could be incurred for leasehold properties.

1. MONEY LAUNDERING REGULATIONS Intending purchasers will be asked to produce identification documentation at a later stage and we would ask for your co-operation in order that there will be no delay in agreeing the sale. 2. These particulars do not constitute part or all of an offer or contract. 3. The measurements indicated are supplied for guidance only and as such must be considered incorrect. Potential buyers are advised to recheck measurements before committing to any expense. 4. We have not tested any apparatus, equipment, fixtures, fittings or services and it is in the buyers interest to check the working condition of any appliances.

Connells Residential is registered in England and Wales under company number 1489613, Registered Office is Cumbria House, 16-20 Hockliffe Street, Leighton Buzzard, Bedfordshire, LU7 1GN. VAT Registration Number is 500 2481 05.

see all our properties at www.connells.co.uk | www.rightmove.co.uk | www.zoopla.co.uk