



Connells

Glenfield Road
Luton



Property Description

Located in a quiet cul-de-sac in the desirable Warden Hills area of North Luton, Connells offer this well presented *EXTENDED* cluster home. The property is located within walking distance to shops, Sainsbury's supermarket and other amenities, whilst transport links are all nearby with the M1 and Train stations a short drive away. Ickneild school is the popular catchment area. Call Connells now!

Entrance Hall

Door to front aspect.

Lounge

12' 1" x 11' 11" (3.68m x 3.63m)

Double glazed patio doors to rear aspect. Electric feature fireplace. Television point. Radiator.

Kitchen

11' 11" x 5' 6" (3.63m x 1.68m)

Window to rear aspect. Fitted kitchen with wall and base units, work surfaces over incorporating a stainless steel sink and drainer unit. Plumbing for a washing machine. Electric oven with electric hob. Space for a fridge/freezer. Combi boiler.

Conservatory

12' 7" x 8' 3" (3.84m x 2.51m)

Concrete base. Double glazed door and windows to rear aspect. Under floor heating, Window to side aspect.

First Floor Landing

Loft access.

Bedroom One

11' 11" x 11' 4" (3.63m x 3.45m)

Double glazed window to rear aspect. Radiator.

Bathroom

Window to rear aspect. Suite comprising bath with mixer taps, wash hand basin and low level wc. Radiator.

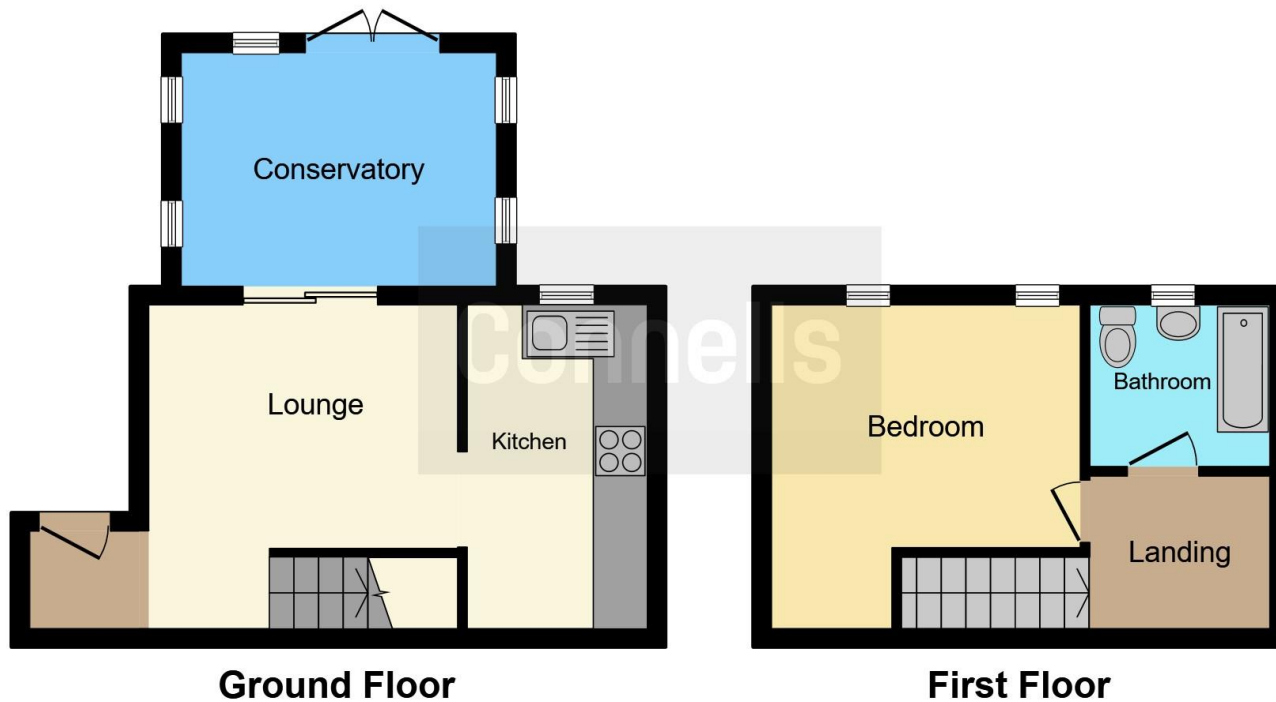
Parking

One allocated parking space.

Rear Garden

Artificial grass. Shed.





Awaiting Photograph

This floorplan is for illustrative purposes only and is not drawn to scale. Measurements, floor-areas, openings and orientations are approximate. They should not be relied upon for any purpose and do not form any part of an agreement. No liability is taken for any error or mis-statement. All parties must rely on their own inspections.

To view this property please contact Connells on

T 01582 595 127
E legrave@connells.co.uk

185 Marsh Road Legrave
 LUTON LU3 2QQ

EPC Rating: D

view this property online [connells.co.uk/Property/LUN102279](https://www.connells.co.uk/Property/LUN102279)

Tenure: Freehold



1. MONEY LAUNDERING REGULATIONS Intending purchasers will be asked to produce identification documentation at a later stage and we would ask for your co-operation in order that there will be no delay in agreeing the sale. 2. These particulars do not constitute part or all of an offer or contract. 3. The measurements indicated are supplied for guidance only and as such must be considered incorrect. Potential buyers are advised to recheck measurements before committing to any expense. 4. We have not tested any apparatus, equipment, fixtures, fittings or services and it is in the buyers interest to check the working condition of any appliances.

Connells Residential is registered in England and Wales under company number 1489613, Registered Office is Cumbria House, 16-20 Hockliffe Street, Leighton Buzzard, Bedfordshire, LU7 1GN. VAT Registration Number is 500 2481 05.

See all our properties at www.connells.co.uk | www.rightmove.co.uk | www.zoopla.co.uk

Property Ref: LUN102279 - 0005