

SALES & LETTINGS

**STOBART
& HURRELL**



**STOBART
& HURRELL**

WE BRING PEOPLE AND PROPERTY TOGETHER

Plot 12, The Rowan, Oak Tree Close, Hoveton, Norfolk

- NEW BUILD
- AIR SOURCE HEATING
- OFF-ROAD PARKING & GARAGE
- POSITIONED WITHIN A CUL-DE-SAC
- OPEN PLAN LOUNGE, KITCHEN & DINER

- BUNGALOW
- CLOSE TO LOCAL AMENITIES
- RENOWNED NORFOLK BUILDERS
- TWO BEDROOMS, ONE WITH EN-SUITE
- SOUGHT AFTER NORFOLK BROADS LOCATION

The Rowan is a two-bedroom semi-detached bungalow, set within the Ten Oaks, a select development of a stunning new private project by the Norfolk home builders Oakfields Homes Ltd, a company renowned for its eco conscious approach, quality and modern designs.

The bungalow is located within a private cul-de-sac in the heart of the Norfolk Broads in the picturesque village of Hoveton, where you can enjoy the local riverside cafes and restaurants, train station, doctors' surgery, dentist, post office, Roy's department store and supermarket as well as easy access to Norwich city centre and the surrounding coastline.

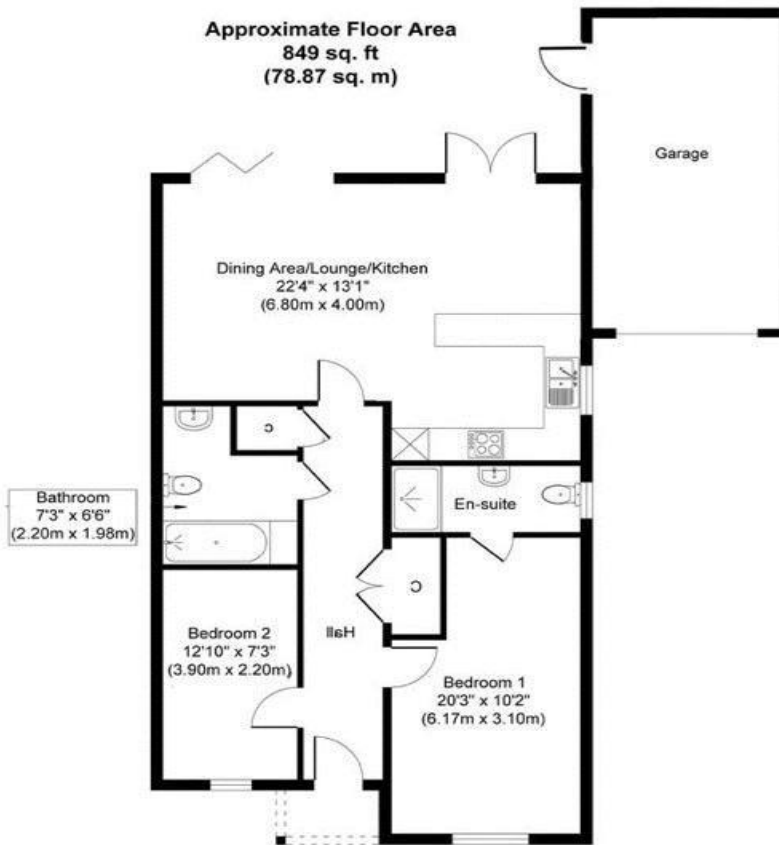
Set back from the road, the property benefits from an easy to maintain frontage, off-road parking and a garage. To the rear, the levelled garden is ready to seed and is a blank canvas, waiting for the new owners to create their own individual designs.

With stunning presentation throughout, the main entrance to the property, via an open porch, leads into a hallway where separate internal doors provide access into a family bathroom and two bedrooms, one with an en-suite. To the rear of the property is a fabulous open plan lounge, kitchen and dining room, that is bright and airy with both bi-folding and separate double doors that overlook and open out to the rear garden.

If you are looking for recreation or relaxation, the Broads waters are on your doorstep, also within easy reach are the sandy beaches of the Norfolk coastline or the city of Norwich with its excellent retail therapy, train station, numerous restaurants and cafes and extensive historical interest.

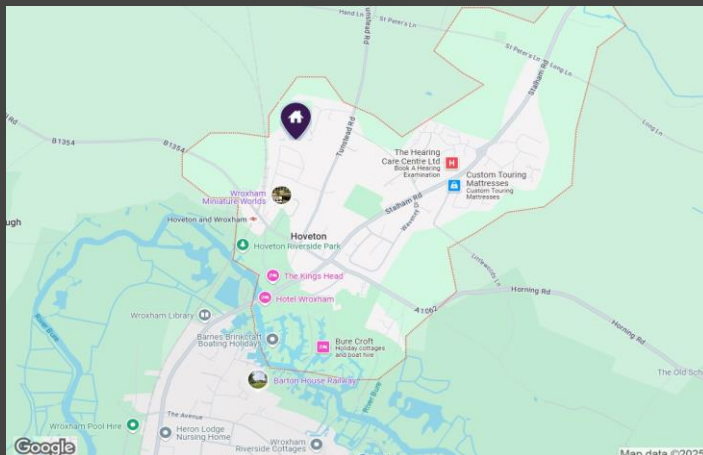


Approximate Floor Area
849 sq. ft
(78.87 sq. m)



Whilst every attempt has been made to ensure the accuracy of the floor plan contained here, measurements of doors, windows, rooms and any other items are approximate and no responsibility is taken for any error, omission, or mis-statement. The measurements should not be relied upon for valuation, transaction and/or funding purposes. This plan is for illustrative purposes only and should be used as such by any prospective purchaser or tenant. The services, systems and appliances shown have not been tested and no guarantee as to their operability or efficiency can be given.

Copyright V360 Ltd 2025 | www.houseviz.com

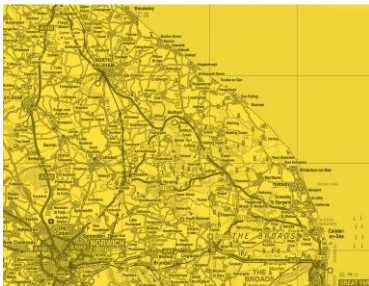




Whether selling, buying or letting, there can be plenty to organise. Our range of services and our experience of the local market means we can help or recommend like-minded reputable firms to assist you with your move.



Come in and meet us, visit us on line or call and speak to one of the team to learn more.



Stobart & Hurrell
Unit 3A, Station Business Park
Horning Road West, Hoveton, Norfolk NR12 8QJ

www.stobarthurrell.co.uk
enquiries@stobarthurrell.co.uk
01603 782 782

