



133 Highgate Road, Queensbury, Bradford, BD13 1DJ

Offers Over £550,000

133 Highgate Road, Bradford BD13 1DJ

No Chain. Set back from the road with a spacious driveway is Moorcroft, a commanding stone built family home set in approx. 1/3 acre of stunning landscaped gardens.



Council Tax Band: F



No Chain. Set back from the road with a spacious driveway is Moorcroft, a commanding stone built family home set in approx. 1/3 acre of stunning landscaped gardens.

Having 5 double bedrooms with 3 bathrooms in addition to 3 reception rooms, Moorcroft is a light and bright spacious home which has been completely renovated with a new central heating system including new boiler and pipework, fully rewired, all new windows in addition to new soffits and gutters.

The modern fitted breakfast kitchen benefits from Neff oven and Neff gas hob and is enhanced by a well equipped utility room and walk in pantry. There is a serving hatch into the formal dining room which has a vast picture window with delightful garden views in addition to a newly installed steel log burner. The sitting room has a striking period marble fireplace which also has a similar picture window with garden views and the third reception room is currently used as a play room, but could be utilised as a gym, additional office or snug. There is a modern shower room and W.C. to the ground floor situated close to the study which allows this to be used as a fifth double bedroom, possibly for dependant relatives.

The master bedroom benefits from a bank of fitted wardrobes and a luxury private ensuite which has both a bath and separate large shower. There are 3 further double bedrooms to the first floor which are served by the stylish house bathroom which also has a bath and separate corner shower cubicle. The landing has a walk in linen cupboard and a stunning stained glass window.

Externally, the property has a stone built double garage and the drive(complete with turning circle) can accommodate numerous vehicles.

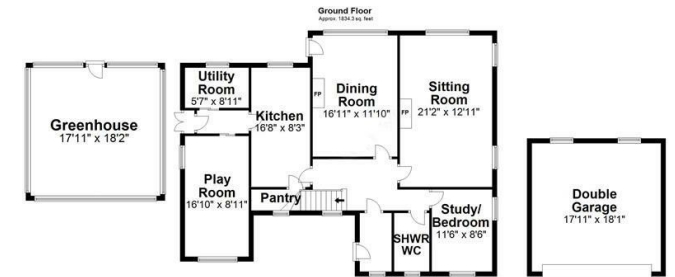
Agent Notes & Disclaimer.

The information provided on this property does not constitute or form part of an offer or contract, nor maybe it be regarded as representation. All interested parties must verify accuracy and your solicitor must verify tenure/lease

information, fixtures & fittings and, where the property has been extended/converted, planning/building regulation consents. All dimensions are approximate and quoted for guidance only as are floor plans which are not to scale, and their accuracy cannot be confirmed. Reference to appliances and/or services does not imply that they are necessarily in working order or fit for the purpose.







Total area: approx. 2786.6 sq. feet
 Search Portal or Website Profiles Only. All measurements in feet, inches, centimeters, meters, and approximate. Accuracy may vary. Dimensions are shown consistently and are approximate only. The same information is shown in our floor plans. Accuracy may vary. Dimensions are shown consistently and are approximate only. The same information is shown in our floor plans.

