

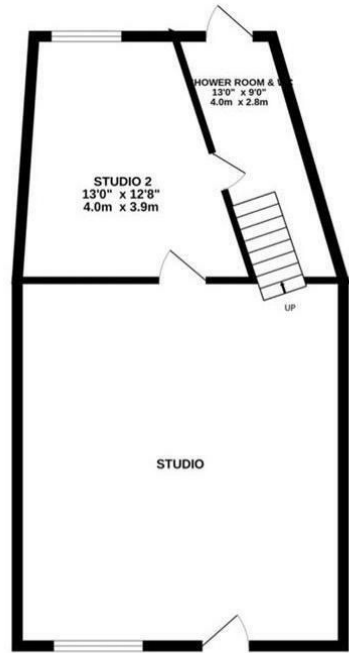


30 Westercroft Lane, Halifax, HX3 7TY

£150,000

- Commercial Unit.
- Large, Functional Space.
- Separate Store & Shower Room.
- Northowram Village.

GROUND FLOOR
538 sq.ft. (50.0 sq.m.) approx.



A unique and versatile commercial space situated in the sought-after village of Northowram. Offering a fantastic spacious functional room with a separate large shower room.

Directions

Viewings

Viewings by arrangement only. Call 01422 756001 to make an appointment.

Council Tax Band

EPC Rating:

Energy Efficiency Rating		Current	Potential
<i>Very energy efficient - lower running costs</i>			
(92 plus) A			
(81-91) B			
(69-80) C			
(55-68) D			
(39-54) E			
(21-38) F			
(1-20) G			
<i>Not energy efficient - higher running costs</i>			
England & Wales		EU Directive 2002/91/EC	