



# APARTMENT 10

---

Nature's Point, Pistyll

**Rickitt**  
Partnership

---

## A delightful appointed first floor two double bedroom apartment

First floor apartment ♦ Two double bedrooms ♦ Ensuite and family bathroom ♦ Spacious and versatile living/dining areas ♦ Well equipped kitchen ♦ Log burner ♦ Convenient parking ♦ Great views ♦ Balcony with views ♦ EPC B

### Description

A beautifully appointed first floor two double bedroom apartment set in a stunning and secluded coastal development. This light filled, spacious and contemporary apartment with fantastic sea views ideal for breaks at any time of the year on the edge of Nefyn Bay in an area of outstanding natural beauty. The apartment is also practical and laid out to maximise space and storage.

### Entrance

Slate floor, coat nook, built in cupboards housing washer/dryer and extra freezer.

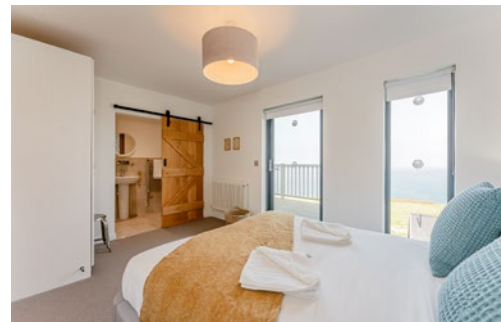
### Kitchen/living/Dining Area

#### Kitchen Area

A range of white wall and base units with white quartz work surface and one and a half bowl white porcelain sink unit with mixer tap. Neff electric oven and microwave, Neff induction hob, integrated fridge/freezer. Double glazed window to rear.

#### Dining Area

Built in oak bench seating with storage beneath and space for dining table.





### **Living Area**

With floor to near ceiling double glazed windows to sea views and double glazed door to large rear timber deck area with sea and headland views. Inset fireplace with log burner on slate hearth. Two tall radiators.

### **Bedroom One**

Built in cupboard and shelves, dressing table with mirror. Floor to near ceiling double glazed window and door to deck with sea views. Radiator.

### **En suite Shower Room**

Walk in shower with rain and hand held shower heads. Hand wash basin with glass shelf over, low level WC. Heated towel rail. Tiled floor, part tiled walls.

### **Bedroom Two**

Built in cupboard and dressing table with mirror. Double glazed window to rear. Radiator.

### **Bathroom**

Bath with mixer tap and rain shower and separate hand held shower head over with glass shower screen. Hand wash basin with glass shelf over, low level WC. Heated towel rail. Tiled floors and part tiled walls.

### **Outside**

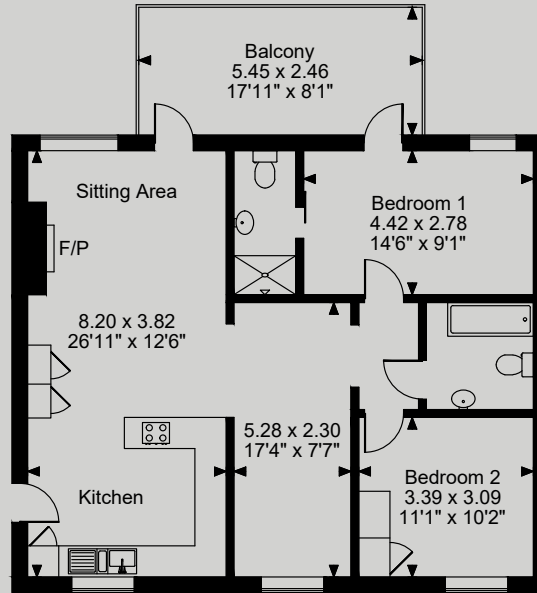
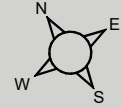
The apartment has its own timber decked balcony to the rear with great views across. There is off road parking for vehicles.

### **Special Note**

The photos are of apartment 14



**Approximate Gross Internal Area**  
**859 Sq Ft/80 Sq M**  
**Balcony external area = 144 Sq Ft/13 Sq M**



## First Floor

**FOR ILLUSTRATIVE PURPOSES ONLY - NOT TO SCALE**

The position & size of doors, windows, appliances and other features are approximate only.

© ehouse. Unauthorised reproduction prohibited. Drawing ref. dig/8567483/SS

**Rickitt**  
Partnership

Tel: 01244 322 322  
info@rickittpartnership.co.uk

Tel: 020 7839 0888  
[www.rickittpartnership.co.uk](http://www.rickittpartnership.co.uk)

Rickitt Partnership gives notice that these particulars do not constitute an offer or contract or part thereof. All descriptions, photographs and plans are for guidance only and should not be relied upon as statements or representations of fact. All measurements are approximate and not necessarily to scale. We have not tested any apparatus, equipment, fixtures or services and it is in the buyers interest to check the working condition of any appliances. Where any EPC is held for this property, it is available for inspection at the Chester office by appointment. Any prospective purchaser must satisfy themselves of the correctness of the information within the particulars by inspection or otherwise. Rickitt Partnership does not have any authority to give any representations or warranties whatsoever in relation to this property (including but not limited to planning/building regulations), nor can it enter into any contract on behalf of the vendor. Rickitt Partnership does not accept responsibility for any expenses incurred by prospective purchasers in inspecting properties which have been sold, let or withdrawn.