



6 Vicarage Road, Levens
£280,000



6 Vicarage Road, Levens, Kendal

This delightful semi-detached bungalow is nestled in a peaceful rural setting in Levens. It enjoys easy access to the M6 motorway and is within close reach of the breathtaking Lake District National Park, offering the perfect balance of country living and weekend adventure.

Inside, the property features a fitted kitchen with contemporary units and appliances, ideal for everyday living. The lounge is a warm and inviting space, complete with both gas fire options. A versatile entryway currently serves as a dining area. A bright sunroom provides a serene space overlooking the garden. There are two comfortable bedrooms, one double and one single, the double featuring fitted wardrobes. The bathroom is fitted with modern, stylish fixtures.

Outside, the bungalow benefits from a garage for secure storage, a driveway offering convenient off road parking, and an easy to maintain garden, creating a peaceful outdoor retreat with minimal upkeep.

ENTRY

10' 11" x 4' 5" (3.34m x 1.35m)

LIVING ROOM

13' 1" x 12' 4" (3.99m x 3.75m)

KITCHEN

6' 9" x 10' 5" (2.06m x 3.17m)

SUNROOM

11' 1" x 14' 3" (3.37m x 4.35m)

HALLWAY

2' 7" x 4' 10" (0.80m x 1.48m)

BEDROOM

10' 2" x 10' 5" (3.11m x 3.18m)

BEDROOM

8' 4" x 7' 4" (2.53m x 2.24m)

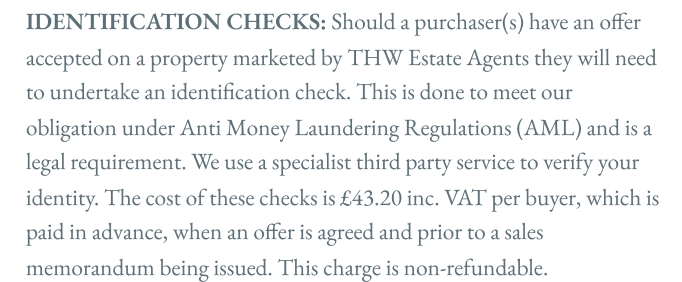
BATHROOM

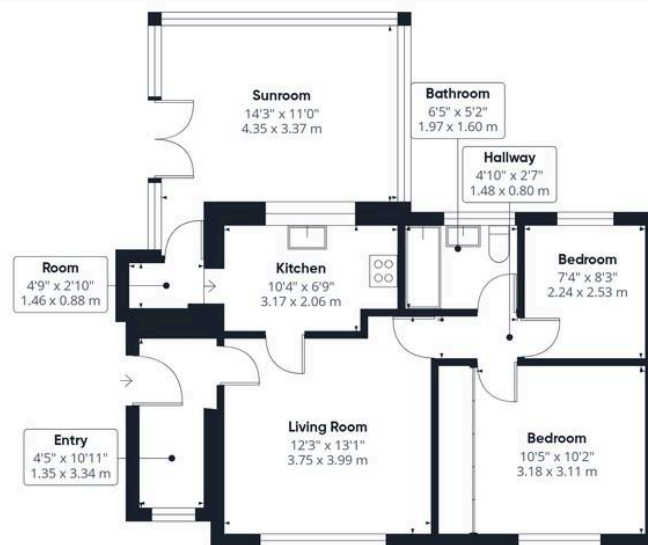
5' 3" x 6' 6" (1.60m x 1.97m)

GARAGE

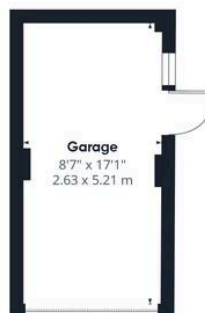
17' 1" x 8' 8" (5.21m x 2.63m)







Ground Floor Building 1



Ground Floor Building 2



Approximate total area⁽¹⁾

832 ft²
77.3 m²

(1) Excluding balconies and terraces

Calculations reference the RICS IPMS 3C standard. Measurements are approximate and not to scale. This floor plan is intended for illustration only.

GIRAFFE360

THW Estate Agents

Palace Buildings Main Street, Grange-Over-Sands - LA11 6AB

015395 33335 • grange@thwestestateagents.co.uk • www.thwestestateagents.co.uk

Please note that descriptions, photographs and plans are for guidance only. Services and appliances have not been tested, measurements are approximate and alterations may not have necessary consents. Contact us for property availability and important details before travelling or viewing properties. THW Estate Agents Ltd is a separate legal entity to the solicitor firm of THW Legal Ltd which has different ownership and clients of THW Estate Agents Ltd do not have the same protection as those of THW Legal Ltd.