



Swangs Cottage, Lowick Green
£325,000



Swangs Cottage

Lowick Green, Ulverston

A well proportioned historic circa 17th Century Lakeland farmhouse which is located on a private road in Lowick Green, near Coniston in the Lake District National Park. Lowick Green is a traditional village surrounded by farmland, farmed by local families throughout the ages. It provides great access to the rest of the Lake District and local transport services with easy access road link for the M6 motorway.

The cottage has been sympathetically renovated and furnished to the highest standards. The property is full of original features, cosy and comfortable. It has the added advantage of stunning views over the Coniston Old Man range of mountains and the Crake Valley.

The accommodation briefly comprises a sitting room with original oak beams, dining room and kitchen to the ground floor. The first floor offers two bedrooms and a bathroom. Outside offers an enclosed sun trap garden to the rear with a gravelled path and seating area with a summer house. To the front of the property is another gravelled seating area looking out towards the Coniston Old Man mountain range. There is driveway parking for two vehicles.

Swangs Cottage is a one minute walk to the Farmers Arms, with a second pub four minutes walk down the hill in Sparkbridge.

The property is suitable as a family home, second home or holiday let. The current owners have used the house as both a successful holiday let and a treasured second home.

- 17th century farmhouse cottage
- Dining room
- Sitting room
- Gardens to front and rear
- Two bedrooms
- Desirable location
- Stunning views

Follow the A590 and take the second exit onto the A5092, follow the road and take the left before the Y junction onto a private lane where Swangs cottage is located on the left hand side.

WHAT3WORDS: painters.exams.leaky

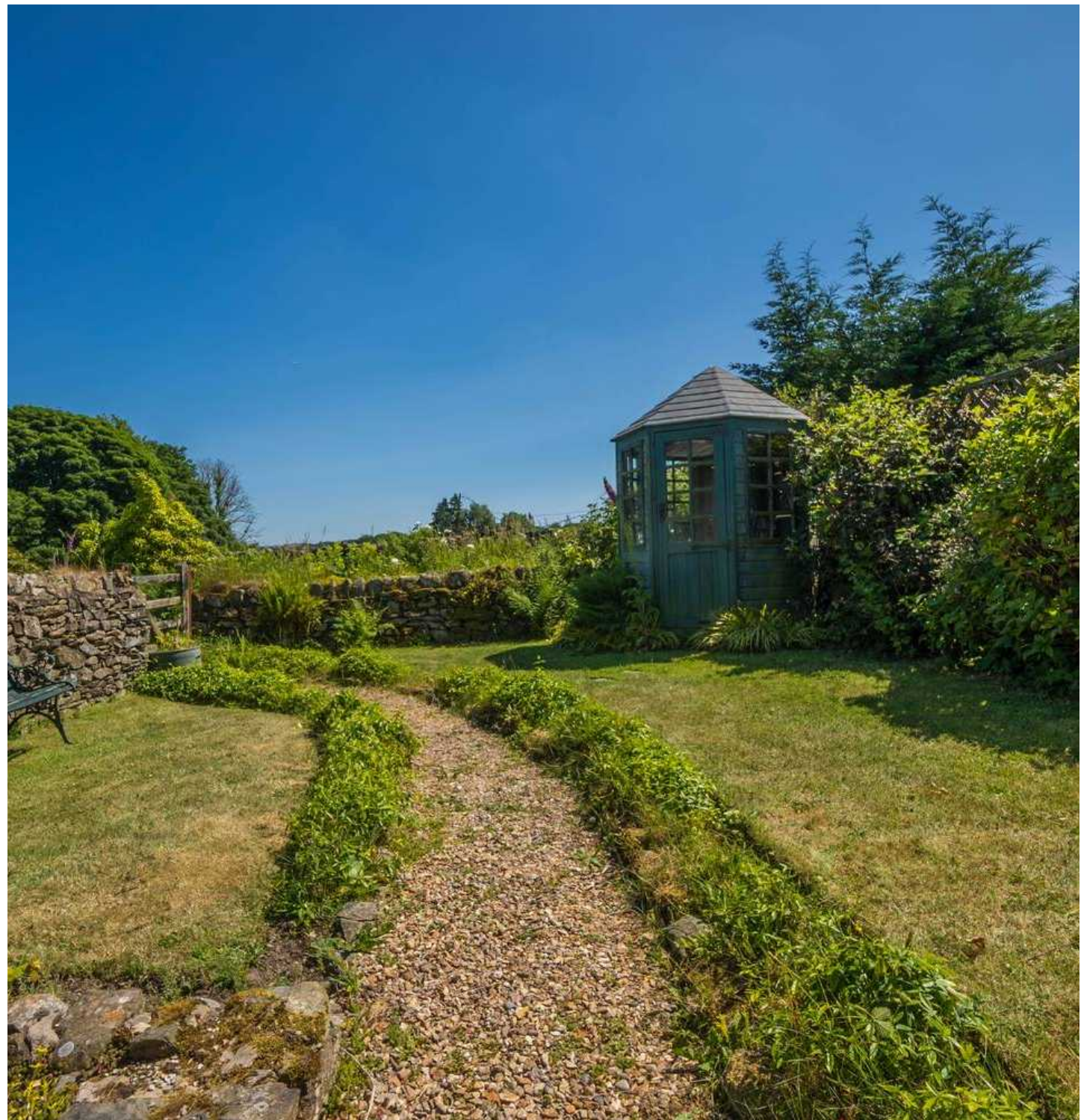
Council Tax band: E

Tenure: Freehold

EPC Energy Efficiency Rating: E

SERVICES

Mains electric, mains water, septic tank shared.





GROUND FLOOR

SITTING ROOM

17' 11" x 11' 11" (5.47m x 3.62m)

Both max. Single glazed door, single glazed window, storage heater, multi fuel stove to stone fireplace, original beams and original hooks, bespoke hand carved cupboard door.

DINING ROOM

16' 4" x 8' 11" (4.99m x 2.73m)

Both max. Single glazed window, storage heater, electric fire, plumbing for washer dryer, built in cupboard, tiled flooring.

KITCHEN

12' 6" x 6' 7" (3.82m x 2.00m)

Both max. Single glazed door, double glazed windows, storage heater, breakfast bar, good range of base and wall units, stainless steel sink, integrated oven, electric hob with extractor/filter over, integrated dishwasher, integrated fridge freezer, tiled splashback, tiled flooring.

FIRST FLOOR

BEDROOM

13' 1" x 8' 11" (3.99m x 2.72m)

Both max. Single glazed window, built in cupboards.

BEDROOM

11' 7" x 9' 8" (3.52m x 2.94m)

Both max. Single glazed window, storage heater, loft access, built in cupboard housing hot water boiler.

BATHROOM

8' 1" x 6' 0" (2.46m x 1.82m)

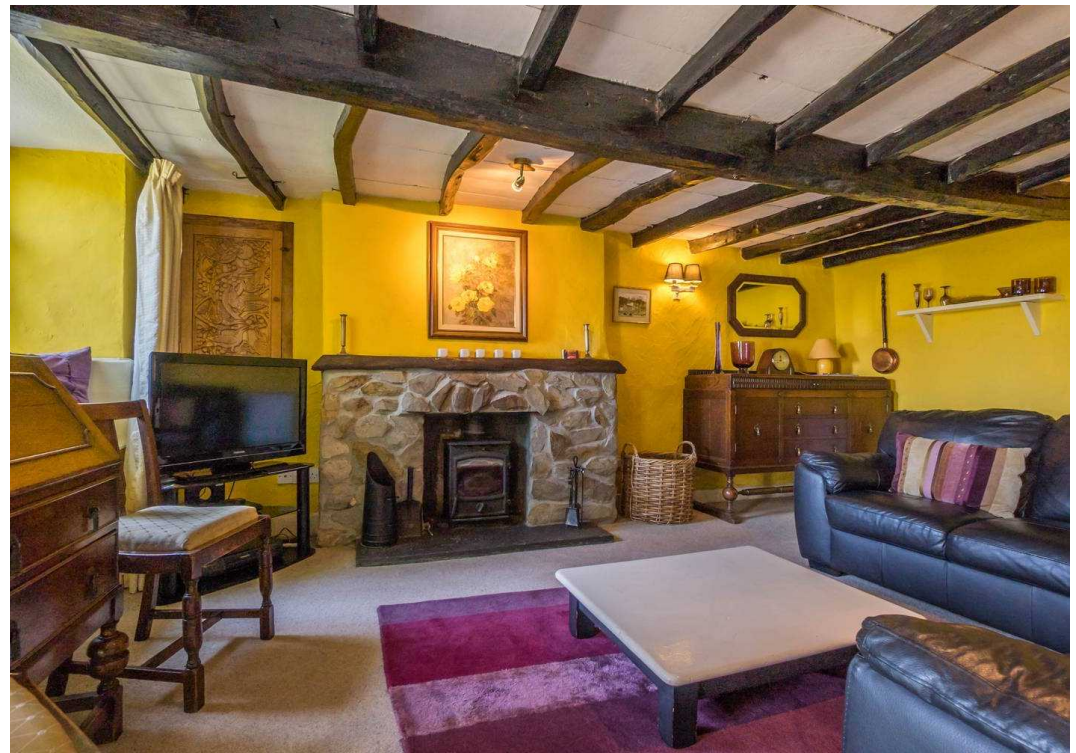
Both max. double glazed window, heated towel radiator, three piece suite comprises W.C. wash hand basin and bath with electric shower over, partial tiling to walls, tiled flooring.

LANDING

7' 0" x 6' 5" (2.13m x 1.96m)

Both max. Double glazed window, storage heater.







THW Estate Agents

Palace Buildings Main Street, Grange-Over-Sands - LA11 6AB

015395 33335 • grange@thwestateagents.co.uk • www.thwestateagents.co.uk

Please note that descriptions, photographs and plans are for guidance only. Services and appliances have not been tested, measurements are approximate and alterations may not have necessary consents. Contact us for property availability and important details before travelling or viewing properties. THW Estate Agents Ltd is a separate legal entity to the solicitor firm of THW Legal Ltd which has different ownership and clients of THW Estate Agents Ltd do not have the same protection as those of THW Legal Ltd.